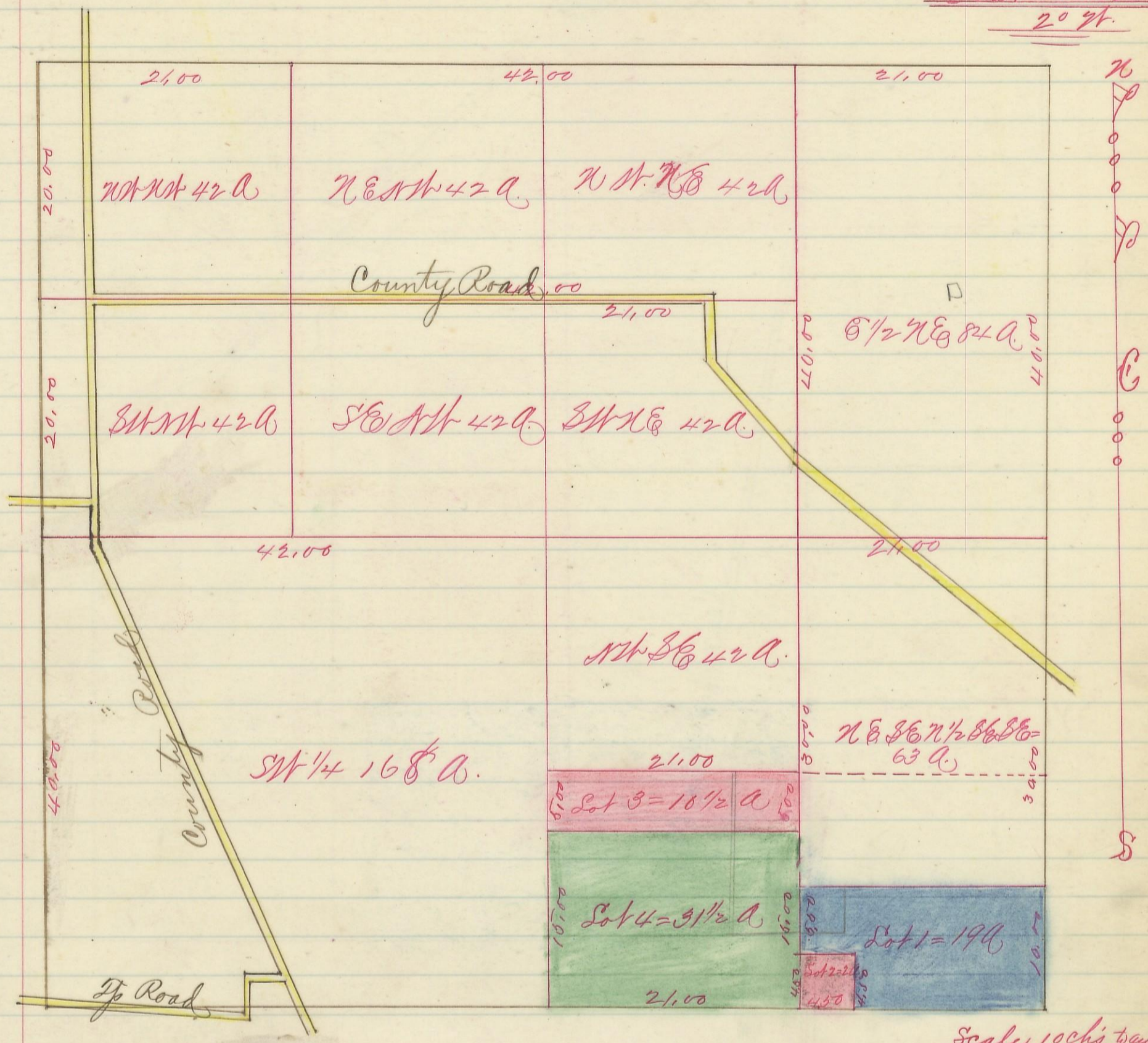


Section No 25 Township No 15 Range No 17.

Variation
2° 27'



Scale 10 ch's to an inch

I hereby certify the above to be a correct Plat of Fractional
 Lots in Section No 25 Township No 15 Range 17 Neveting County Ohio
 Surveyed 1869
 By Geo Davis Surveyor
 Jacob Weaver Recorder