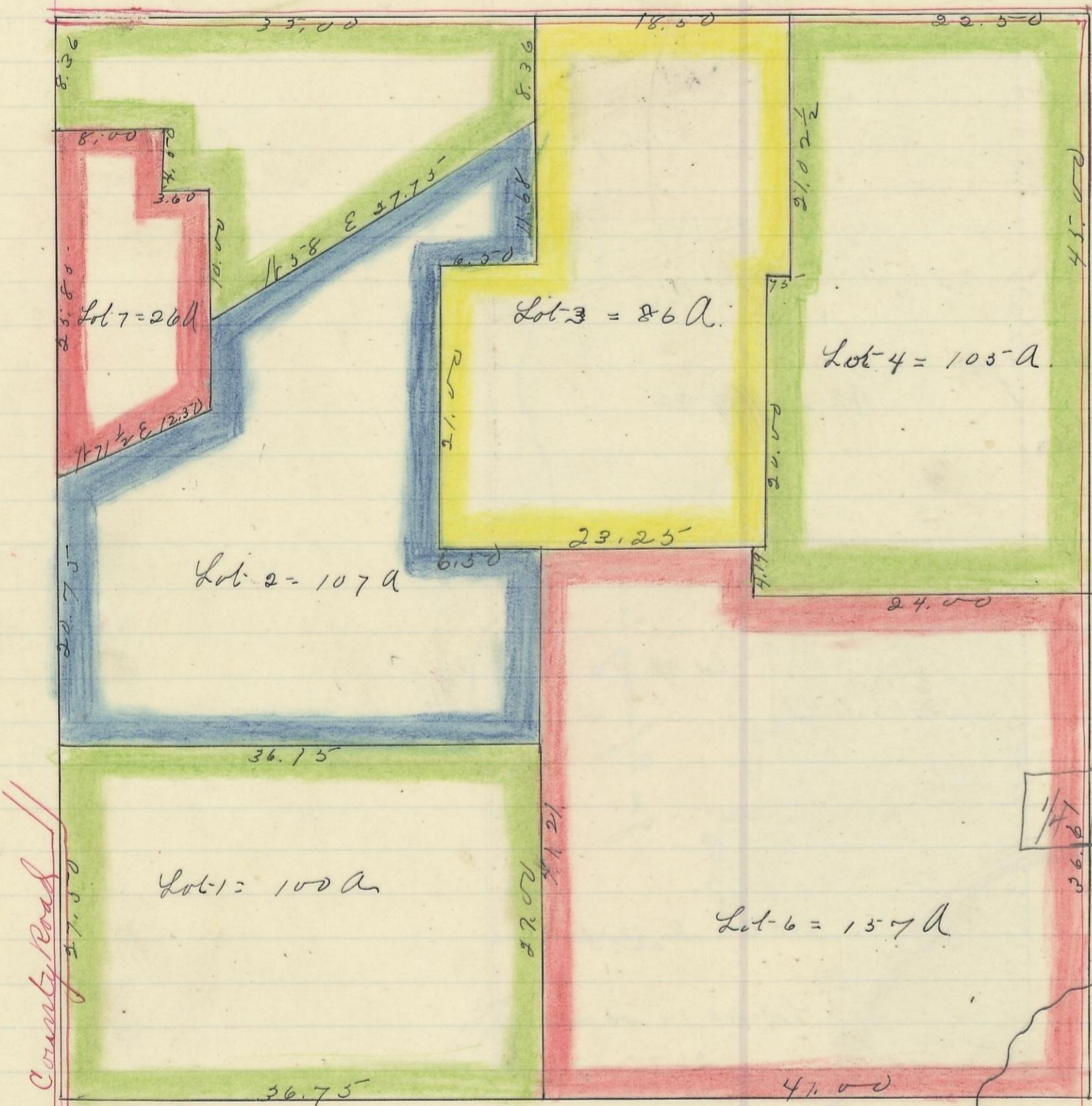


PERRY, No. 12, Range 19, Section No. 18



Variation  
30 N



Scale 10 chs to an inch

I hereby Certify the above to be a correct Plat of Fractional Lots in Section No. 18, Township No. 12 Range No. 19,ocking County Ohio Platted from Deeds. 1881. By Levi Davis Surveyor.

Rec'd and Recorded April 4<sup>th</sup> 1884.

Jacob Heaver. Recorder.ocking County Ohio

I hereby Certify the above to be a true copy P. D. Sloan Recd. H. C. W.

The above Plat transferred from Plat Book "A" page 440. Record of fractional lots H. C. W. June 15<sup>th</sup> 1901.

P. D. Sloan Recorder. H. C. W.