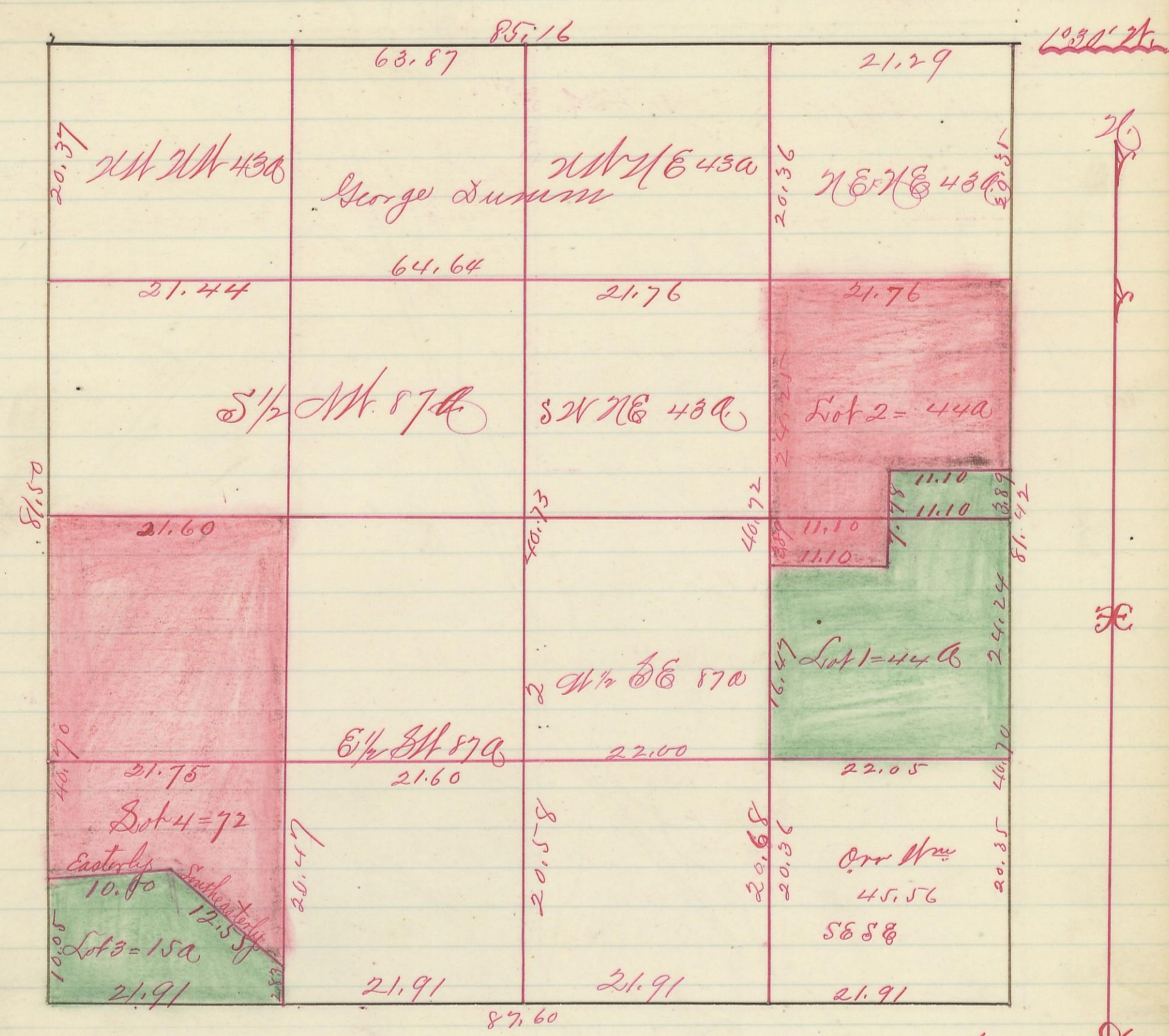


Section No. 19, Township No. 11 Range No. 19

68

Variation



Scale 10 ch. to an inch

I hereby certify the above to be a correct Plat of Practical Lots in  
 Section No. 19 Township No. 11 Range No. 19 Hocking County  
 Surveyed 1860. By Levi Davis Surveyor N.C.O.  
 Recd. and Recorded March 22<sup>nd</sup> 84.  
 Jacob Weaver Recorder N.C.O.