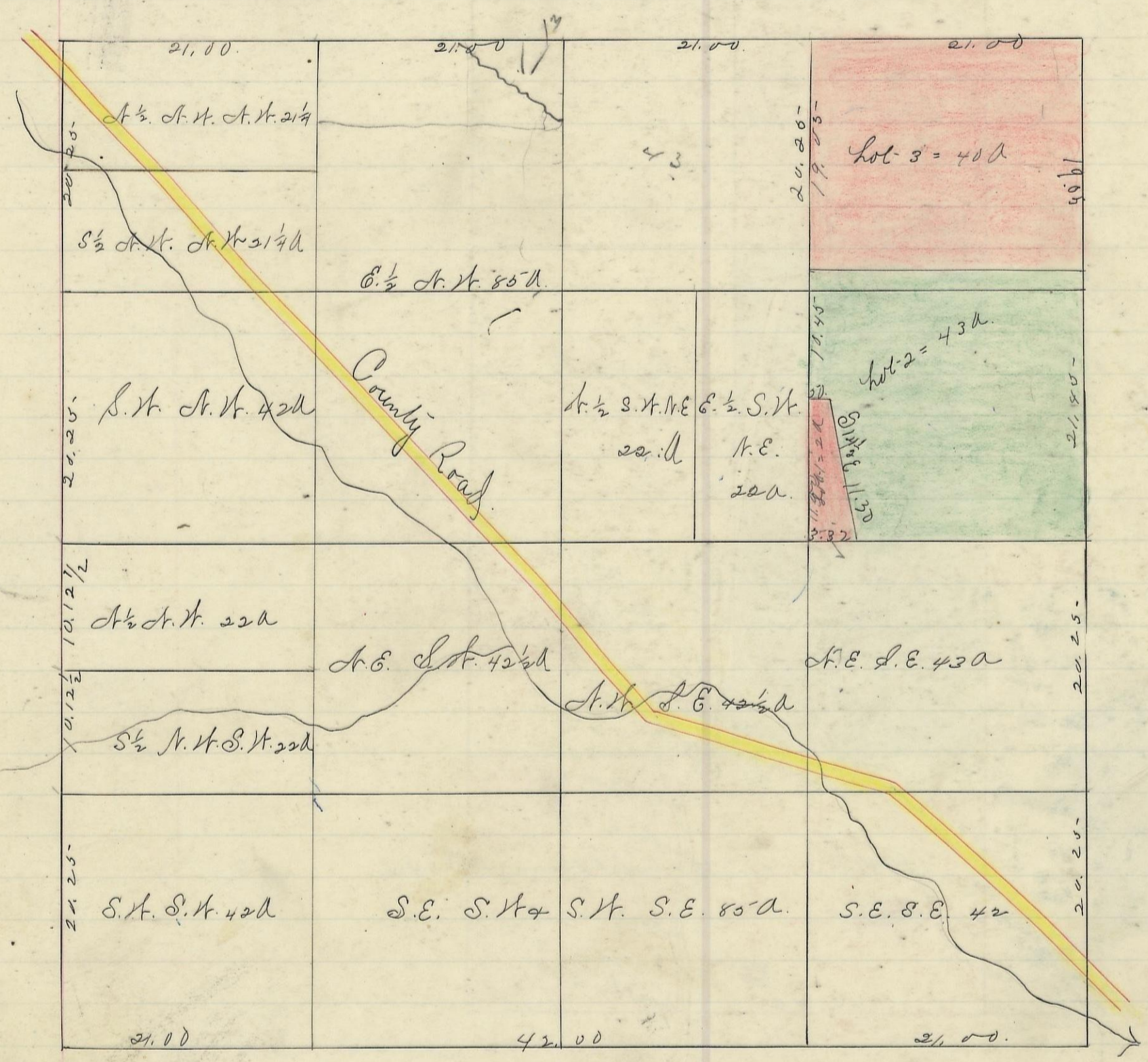
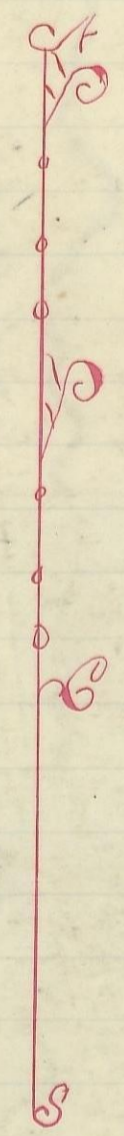


SALT CREEK, No. 11, Range 19, Section No. 30.



Variation  
1° 30' N.



Scale 10 chs to an inch

I hereby certify the above to be a correct plat of Fractional Lots in Section  
 No. 30 Township No. 11. Range No. 19. Jackson County Ohio. Surveyed 1870.  
 By Levi Davis Surveyor. S. C. C.  
 Jacob Weaver Recorder.

I hereby certify the above to be a true copy.  
 P. D. Sloan  
 Recorder. S. C. C.

The above Plat transferred from Plat Book "A" page 422. Record  
 of fractional lots S. C. C. June 28" 1901.  
 P. D. Sloan  
 Recorder. S. C. C.