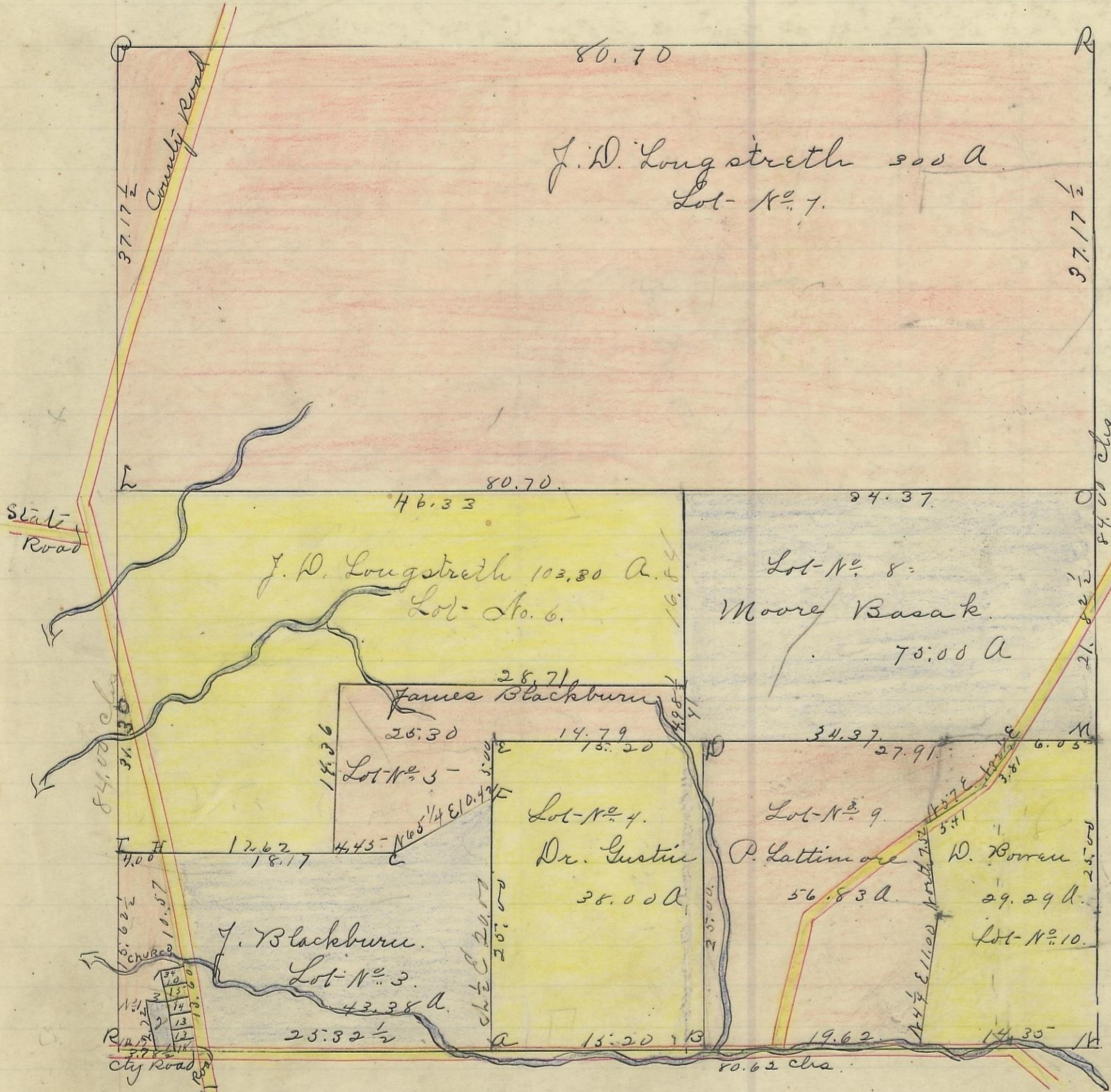


STARR, No. 12, Range 16, Section No. 24.



J. W. Longstreth Lot-N^o 1 = 4.75 } A
 " " " " " 6 = 103.30 } A
 " " " " " 7 = 300.00 } 410.00
 Dr. Gustin " " 2 = 2.
 James Blackburn N^o 3 = 43.30
 " " " " 5 = 23.30 } 66.60
 Dr. Gustin " " 4 = 38.00
 Moore Basak " " 8 = 75.00
 Perry Lattimore " " 9 = 56.83
 Elda Davis " " 10 = 29.24
 Amt Acres 678.10

Corner	Bearing of Tree	Diameter	Corner	Distances	Remarks
A.	Apple tree	8	N 18 E	73 1/2	
B.	Mulberry	18	N 27 E	176	
C.	Braun	10	N 12 1/2 W	102	
D.	Do	6	S 22 W	23 1/2	
E.	Beech	18	S 74 1/2 E	50	
F.	Elm	9	N 33 E	26 1/2	
G.	Dogwood	9	N 83 E	15 1/2	
H.	Elm	10	S 62 W	39	
I.	oak	36	N 42 W	6	
J.	Mulberry	9	N 33 E	60	
K.	apple tree	12	N 80 E	60	
L.	N. Walnut	12	N 30 W	18 3/4	
M.	Elm	26	corner		
N.	Sugar	14	S 1 E	68 3/4	
O.	N. oak	16	S 54 1/2 W	70	
P.	N. oak	10	S 10 E	11	
Q.	Hickory	6	N 39 W	4 3/4	
R.	maple	24	S 45 W	36	
S.	N. oak	14	N 2 E	57	
T.	Elm	8	S 37 E	4	
U.	Hickory	6	N 66 E	14	
V.	N. oak	26	corner	tree	
W.	Hickory	15	N 23 3/4 W	43	
X.	Beech	12	N 21 W	54	
Y.	Do	12	S 45 W	32	
Z.	B. oak	6	corner	tree	
AA.	maple	10	S 56 E	45	
AB.	Hickory	14	S 2 E	21	

I hereby certify the above to be a correct Plat of Fractional Lots in Section N^o 24 Township N^o 13 Range N^o 16 Ohio Company's Purchase, Locking County Ohio Surveyed 1870 by Levi Davis Sur. S. C. O. Rec'd for Record January 11" 1879. Recorded Jan. 11" 1879.

Benj. White
 Recorder S. C. O.

The above Plat transferred from Plat Book "A" page 251 & 250 Record of fractional lots S. C. O. July 12" 1901. and Certified to be a true copy by P. D. Sloan Recorder S. C. O.