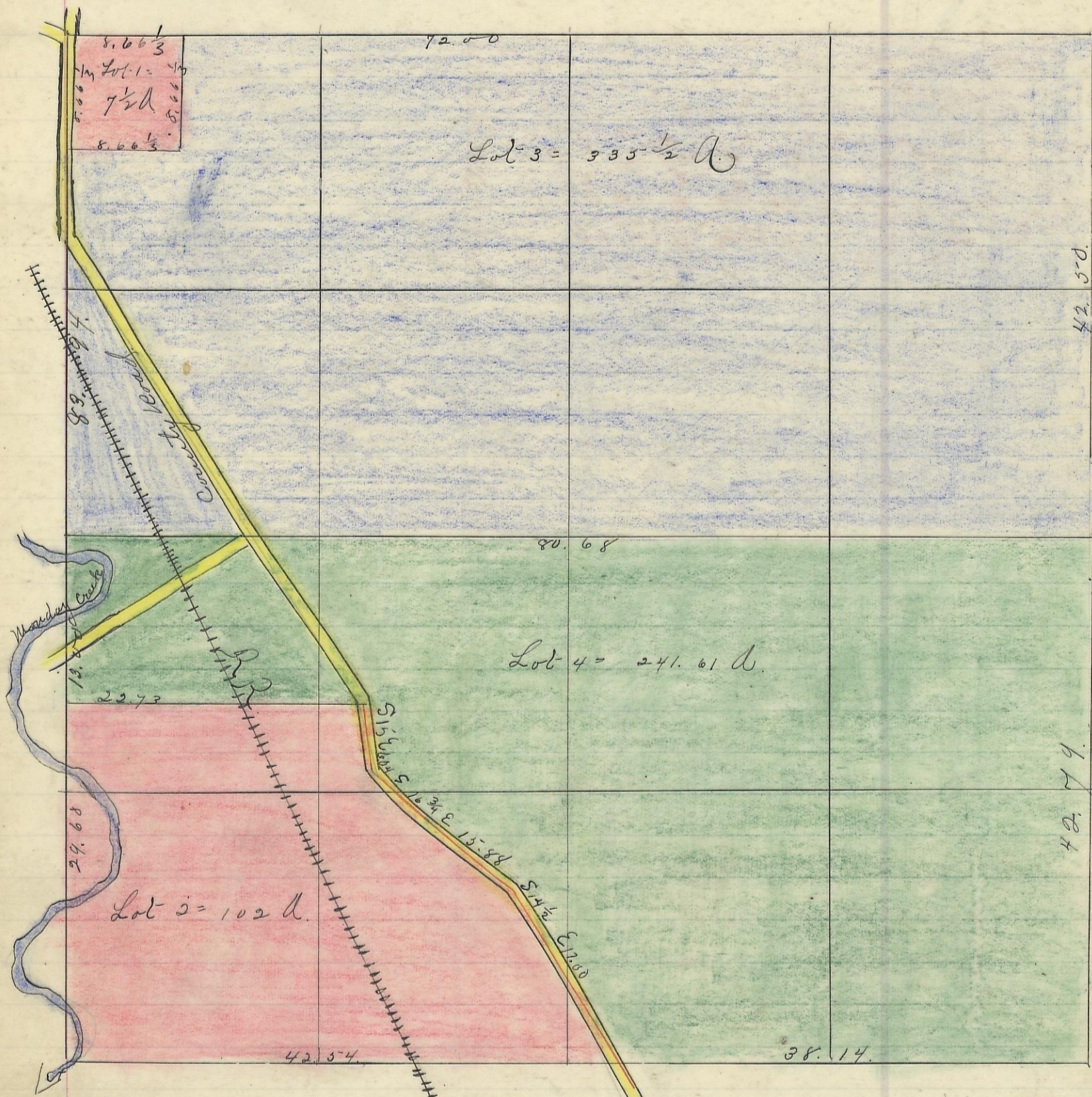
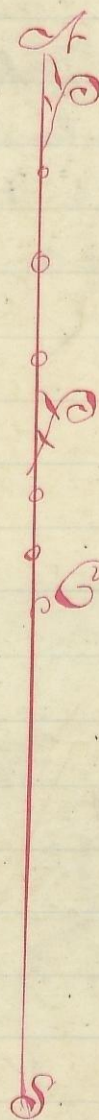


42.60
7.66
33.93



Variation

2° 43' N.



Scale 1/8 inch to an acre

I here by certify the above to be a correct Plat of Fractional Lots in Section No. 7 Township No. 13 Range No. 15 Locking County Ohio Surveyed 1870 & 1877

By Levi & James Davis Surveyors
Received April 30th 1883 at 6 o'clock P.M.
Recorded May 12th 1883

Jacob Weaver Recorder S. C. O.

I here by certify the above to be a true copy.
P. D. Slown

The Above Plat transferred from Plat Book "A" page 262 Record of Fractional Lots S. C. O. July 15th 1901.

P. D. Slown
Recorder S. C. O.