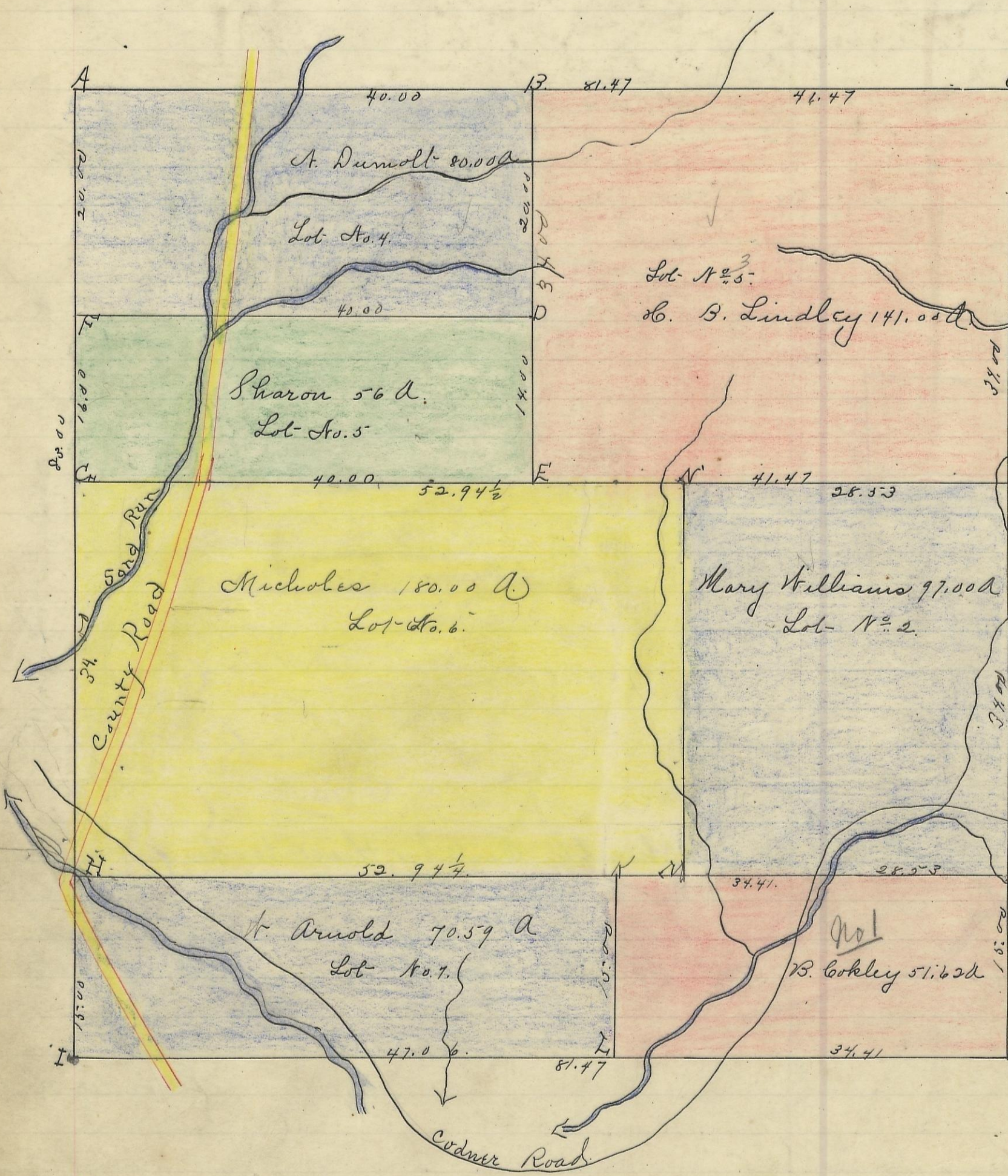


66
330
60
770



- A. Gum. 5 S. 54. E 19 1/2 B. oak 15-369 A
- B.
- C. Ches oak 18 S 25 N 44 N. oak 8 N. 3 1/2 E 18 1/2
- D. Ches. oak 18 S 29 E 33 1/2 B. oak 4 road-
- E. Ches. oak 9 N. 29 E 53 Gum 10 S 75 E 32 1/2
- F. Sugar. 12 N. 61. N. 46. Hickory 10 N 50 E 33 1/2
- G. Beech 15 N. 32 E 15 Ash 9 South 29
- H. Sugar 20 N. 21 E 31 Beech 9 S 57 1/2 E 37 1/4
- I. Beech 15 North 82 N. oak 9 S 81 N. 41 1/4
- J. Poplar. 15. South 22 Beech 12 N. 12 E 18
- K. Beech. 12 S 55 N. 28 1/4. Gum. 14 N. 11 N. 44.
- L. Beech 15 N 46 N. 32 No 12 N 77 3/4 E 47 1/3
- M. Beech 14 N. 57 N. 7 1/2 Poplar 24 N 14 1/4 N 9 + pop 8 N. 23 1/2 E 48 1/2
- N. Poplar 9 East 4 Beech 10 S 14 N. 19 Dog-wood 4 North 8
- O. Ash. 8. North 56 1/4 Beech 9. S 22 3/4 N 82 3/4
- P. N. oak. 24 N. 13 N 7 Maple 14 S 31 N 20 1/2
- Q. B. Coakley Lot No. 1 - 51.62 A.
- Mary Williams No. 2 = 97.00 A
- St. B. Lindley " 3 = 141.00 A
- St. Dumolt " 4 = 80.00 A.
- Sharon " 5 = 56.00 "
- E. Michaels " 6 = 180.00 A
- St. Arnold " 7 = 70.59 "
- Total 676.21 A

Variation
2° N

I hereby Certify the foregoing to be a correct Plat of fractional Lots in Section 20 Township No. 13. Range No. 15 Ohio Counties purchase blocking County Ohio containing 676.21 Acres: Surveyed February 1870.

Recorded February 18. 1870.

By J. E. Smart Recorder C. C. O.

The above Plat transferred from Plat Book "A" page 162 Record of fractional lots C. C. O. July 29 1901. and certified to be a true copy by

D. D. Sloan.

Recorder C. C. O.

Scale 10 ch to an inch