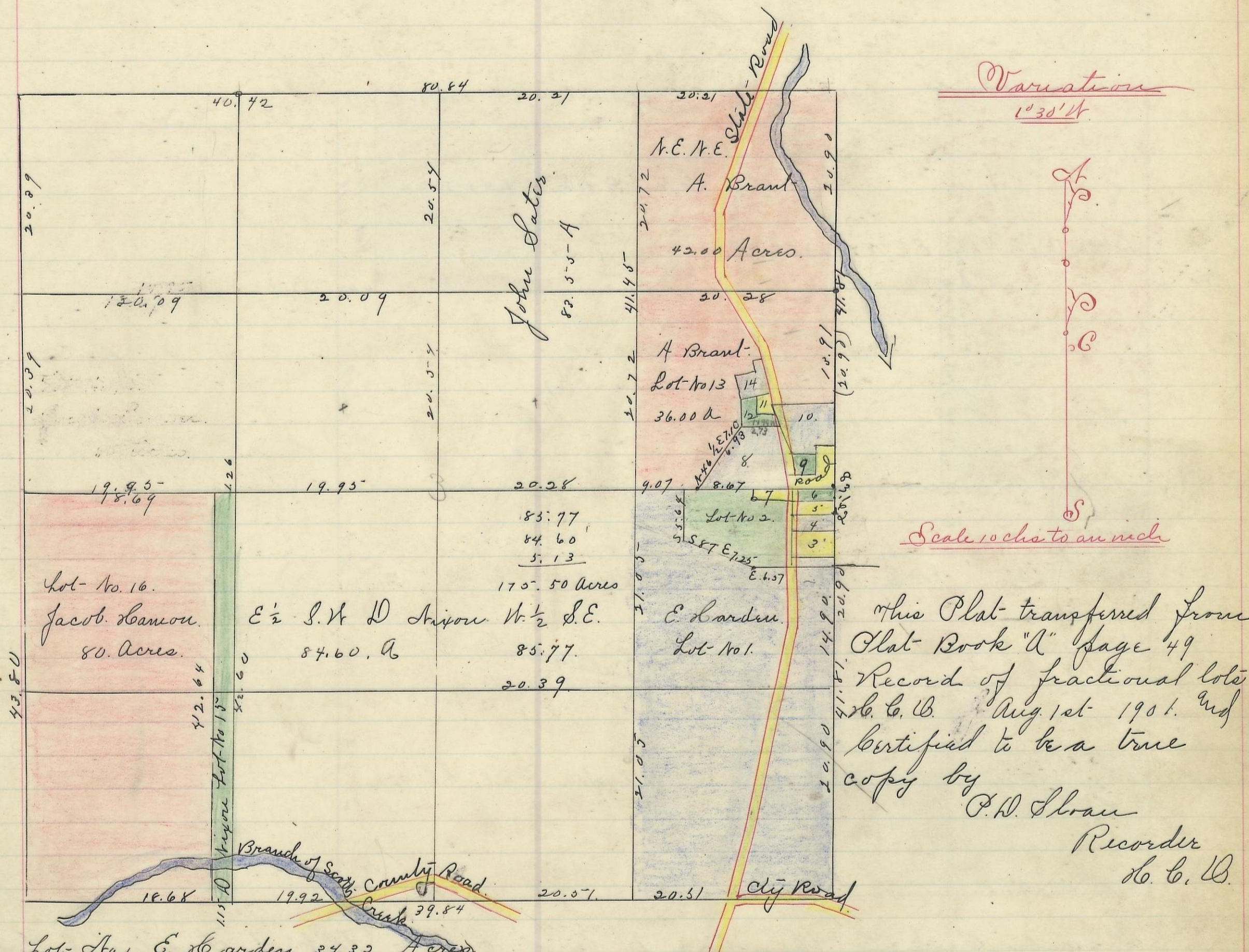


WASHINGTON, No. 13, Range 17, Section No. 3



Variation
1° 30' N

Scale 10 chs to an inch

This Plat transferred from
Plat-Book "A" page 49
Record of fractional lots
S. C. W. Aug 1st 1901. and
certified to be a true
copy by
P. D. Sloan
Recorder
S. C. W.

Lot No. 1. E. Larden 34.32 Acres.
 " " 244. Beers, Beginning at S.E. corner thence West-6,57 N. 87 W 7.25 North 5.64
 East-8.36 South 6 1/4 East-3.03 S 2 E 5 10 3/4 East-2.34 & South 25-S-6.60 A. Lot No. 4 Beginning at S.E. corner thence
 West-2.40 N 2 W 1.37 East-244 & South 1.37-0.33 A. Lot No. 3. Mrs Keck. Beginning at S.E. corner thence West-2.34 N. 2
 N. 2.25 East-2.40 and South 2.25=0.53 A. Lot No. 5. Dresher. Beginning on the S.E. Corner thence West-2.44 N. 2. W 1.12 1/2
 East-247 & South 1.12 1/2=0.28 A. Lot No. 6. Beginning at the N.E. corner, thence west-2,50 S 2. E 1,02 East-2.47 & North
 1.00 =0.25 A. Lots 7 & 10. J. Bowers. No. 7 Beginning at N.E. corner, thence west-3.03. South 6 1/4 East-3.03 & North 6 1/4 Links = 19 ft.
 No. 10. N.E. corner. South 3.58 West-0.30 South 1.04 West-2.54 North 0.69 N 15 1/2 W 4.37 East-4.03. 1.61. Lot No. 8. A Barker. Begin-
 ning at S. W. corner, thence East-8.67-N. 10 1/4 W 2.07 North 0.69 N 15 1/2 W 2.14 N. 88 W 2.73 S 46 1/2 W 6.93-278 A. Lot No. 9. Paschman
 Beginning at S.E. corner, thence west-2.25 N. 10 1/4 W 17. East-2.54 South 1.77-0.42 A. Lot No. 11. L. Gladman. Beginning
 at the S.E. corner, thence 15 1/2 W 0-83 N. 11. W 4, 76, S 79 W 0, 61 S 8 W 1, 66 N 79 E -124 = 1.14. Lot No. 14. Lanming. Beginning at the
 S.E. Corner thence N. 11. W 3.27 S 79 W 0, 53 S 11. E, 0, 77 S 79 W 1, 47 S 11. E 25 0 - N 79 E - 2, 00 = 0, 54 A. Lot No. 12. J. Miller. Beginning at S.E.
 corner, thence N. 88. W 2.73 N. 10. N. thence North 46 E 0.17 N 2 W. -2.27-N. 79 E -1.39 S 8. W. 1.66. -N. 79 E -1.24 - S 15 1/2 E 1.37-0.48
 Lot No. 13. A. Brant-36.00. Amount-84.47 Acres. I hereby certify the above to be a correct Plat of Fractional
 Lots in Section No. 3. Township No. 13. Range No. 17. Hocking County, Ohio. Surveyed and Platted November 1866.
 By Levi Davis Sur. S. C. W. - Recorded December 31st A. D. 1866. Abiram Achers Recorder. S. C. W.