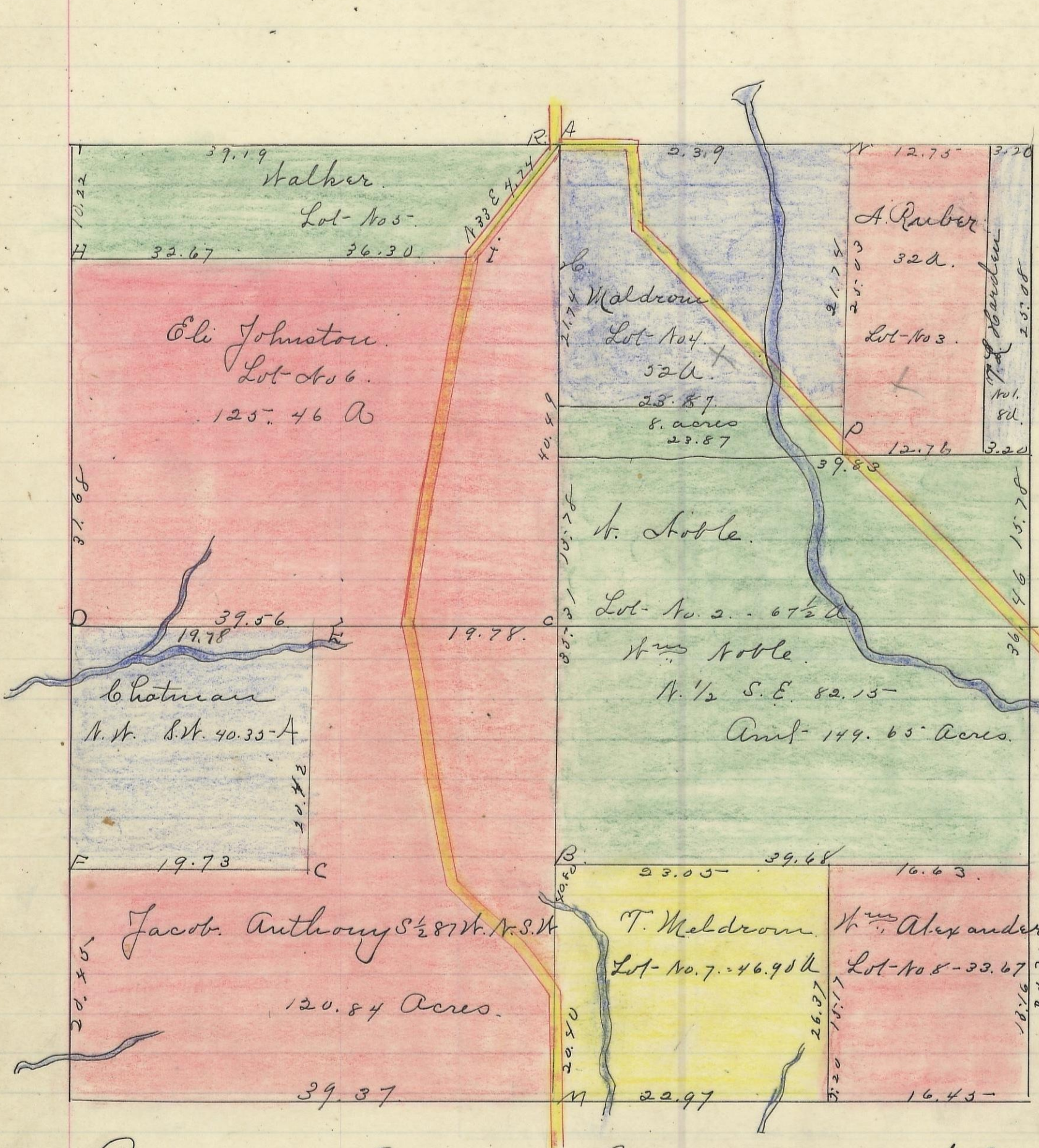


WASHINGTON, No. 13, Range 17, Section No. 14



Corner	Planting	Diameter	Course	Distance
A	poplar	11.	N 49 E	16.
	Gum	14.	N 69 W	19.
	H. oak	11.	N 61 E	24.
	W. oak	14.	N 92 W	24.
B	poplar	10.	S 41 E	51.
C	W. oak	18	N. 88 E	77 1/4
	B. oak	12	Corner	
D	B. oak	3	N. 80 E	58 1/2
E	Hickory	3	S 12 W	20.
F	" "	3.	N 11 W	36.
G	Dogwood	3.	S 57 1/2 W	41.
H	Hickory	7.	S 35 1/2	21.
I	B. oak	9	N 27 W	26
J	H. oak	24.	North	25 1/2
K	Beech	3	N. 6 E	32.
L	Dogwood	4	S 27 E	9.
M	H. oak	6.	N 49 1/2 E	27.
N	Hickory	8	S 29 W	16
O	Gum	12.	S 13 E	13.
P	B. oak	12	N 24 W	22
Q	W. "	14	S 25 W	11.
R	B. "	10.	S 82 E	32.
S	H. "	9	S 52 W	23.
T	H. Do.	8.	North	24.
U	Elm.	8.	N. E.	38.
V	Do.	5	North	
W	Gum	12	North	28 1/2
X	Chest	40	West	72.

Wm. Noble Lot No 2. 67.50  
 Eli Johnston Lot No 6. 125.46  
 Walker Lot " 5. 36.30  
 W. Meldrum " 4. 52.00  
 A Ruber " 3. 32.00  
 L. Garden " No 1. 8.00  
 T. Meldrum " 7. 46.90  
 Wm. Alexander " 8. 33.67  
 Amt. 401.83

Received & Recorded Sept. 18 " 1872 by J. C. Smart. Recorder. Stocking County Ohio

I hereby Certify the above to be a true copy. P. D. Sloan

The above Plat transferred from Plat Book "A" page 178. Record of fractional Lots of C. W. Aug. 5 " 1901.

P. D. Sloan Recorder C. C. W.

Variations  
 2.00

Scale 10 chs to an inch