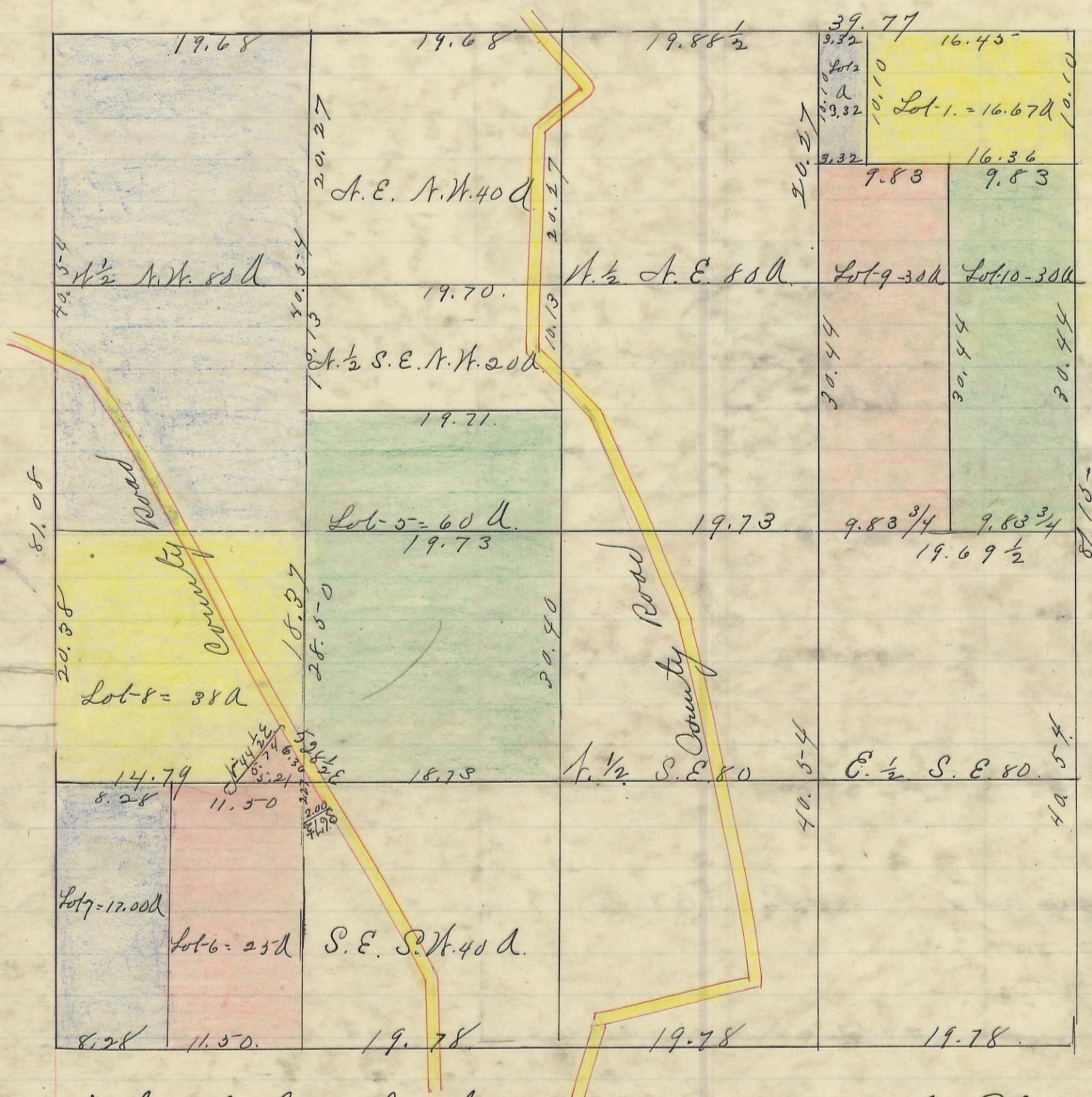


WASHINGTON, No. 13, Range 17, Section No. 23



Variation  
2 1/2

Scale is to an inch

I hereby certify the above to be a correct Plat of Fractional Lots in Section No. 23 Township No. 13 Range No. 17. Jackson County Ohio Surveyed 1870.  
By Levi Davis Surveyor S. C. W.

Recorded Dec. 15<sup>th</sup> 1883.

Jacob Weaver.  
Recorder.

I hereby certify the above to be a true copy.

P. D. Sloan  
Recorder

The Above Plat transferred from Plat Book "A" page 305 Record of Fractional Lots S. C. W. Aug. 6<sup>th</sup> 1901.

P. D. Sloan  
Recorder S. C. W.