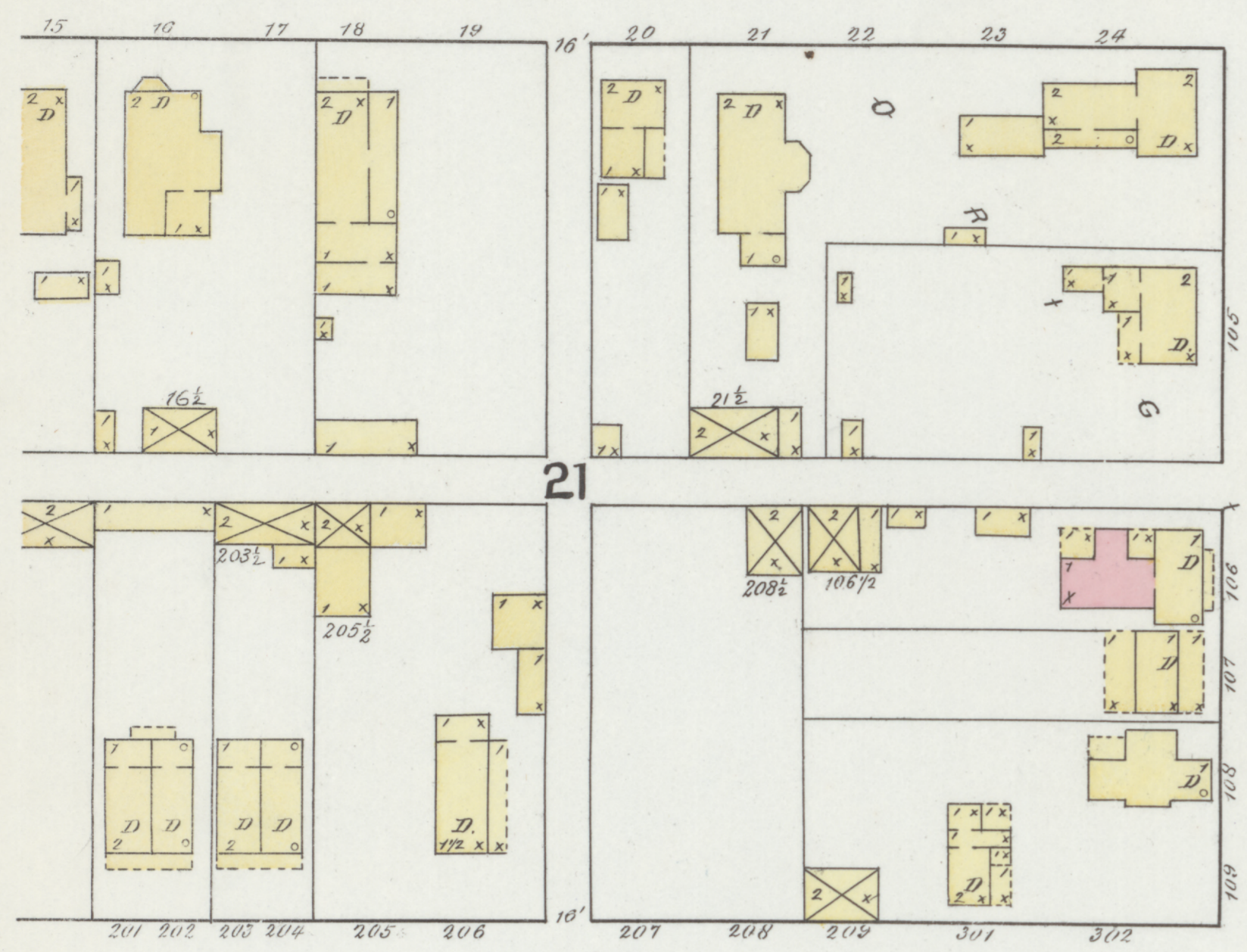
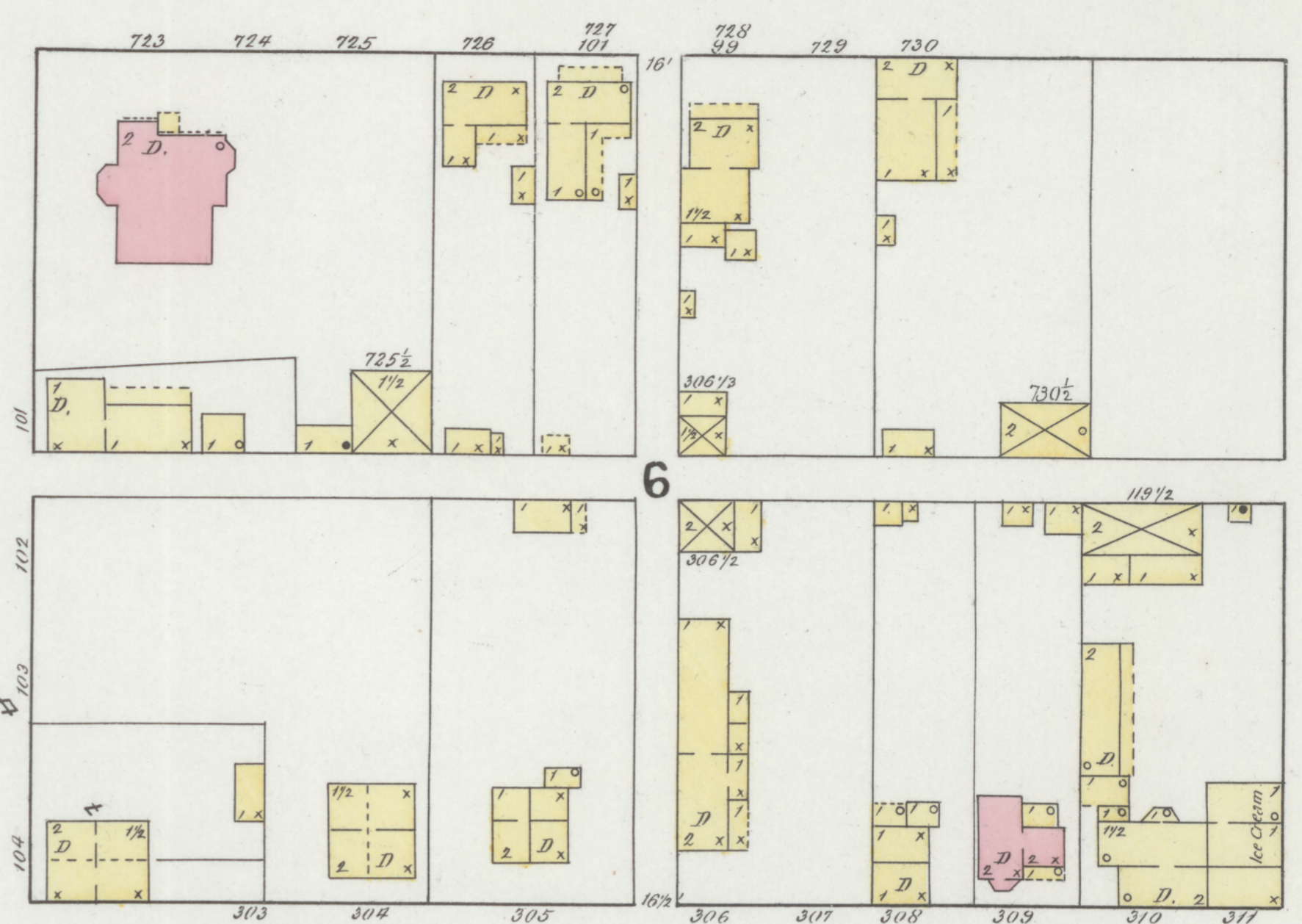


2ND ST.

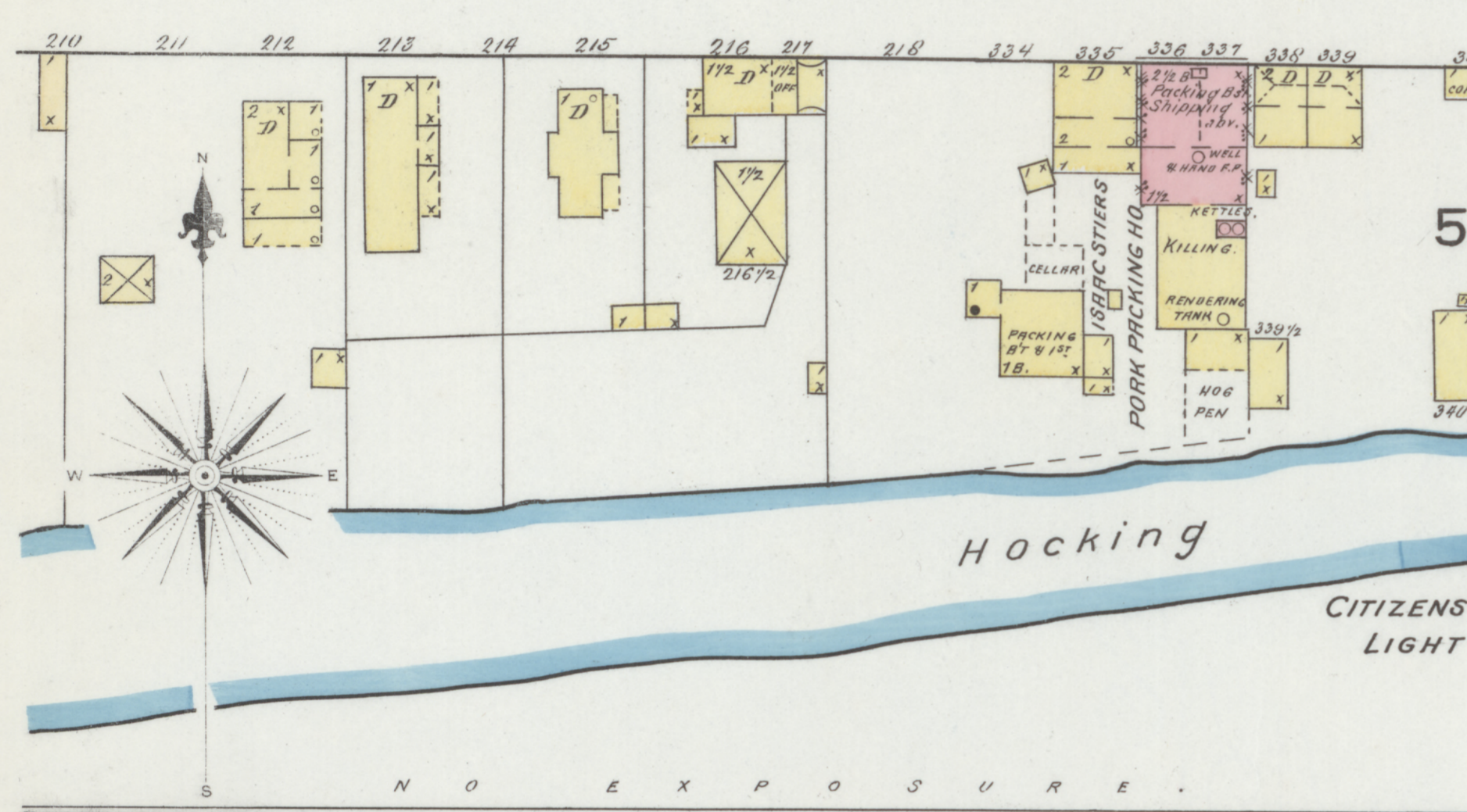


MARKET

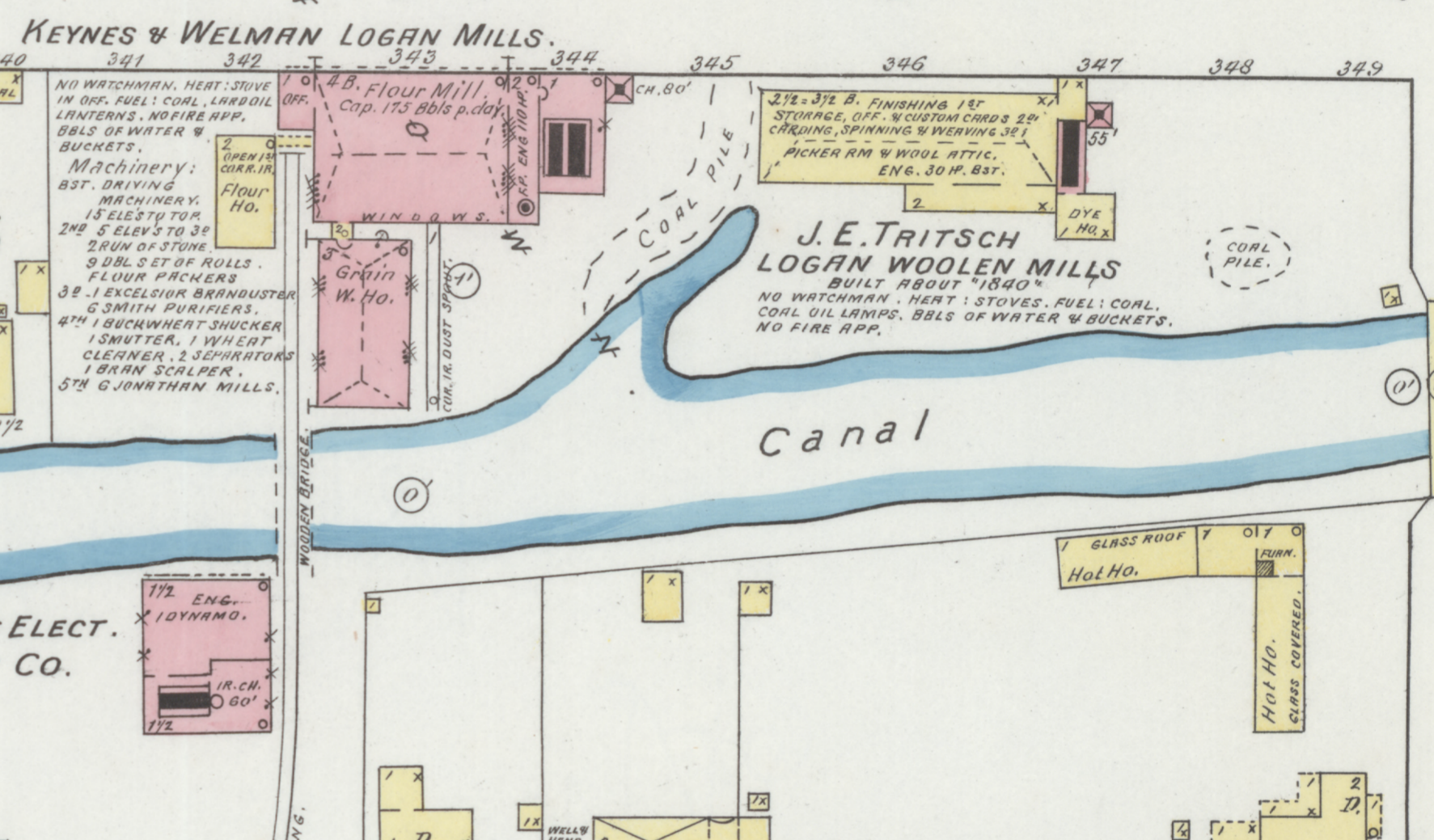


MULBERRY

FRONT



Hocking

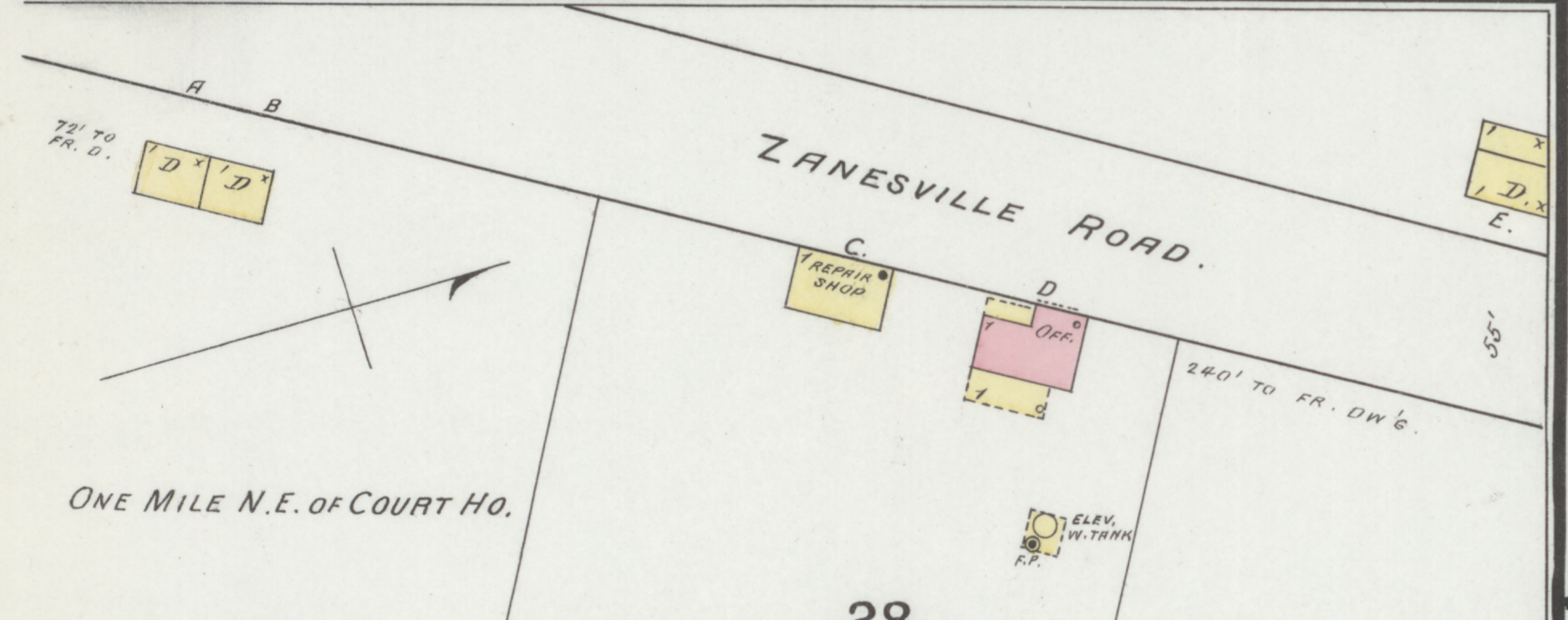


KEYNES & WELMAN LOGAN MILLS.

J. E. TRITSCH LOGAN WOOLLEN MILLS

CITIZENS ELECT. LIGHT CO.

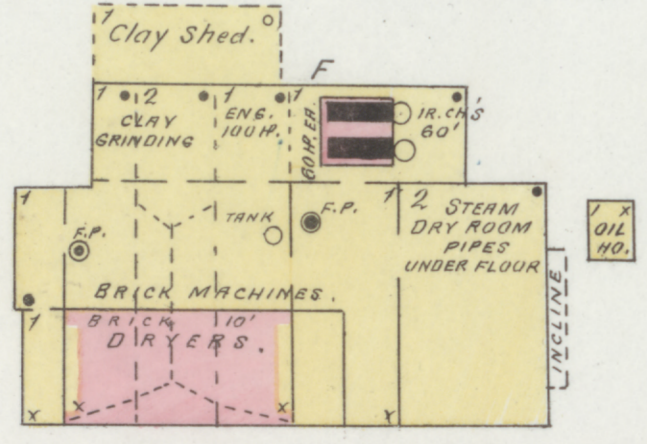
BOWEN C¹/₂



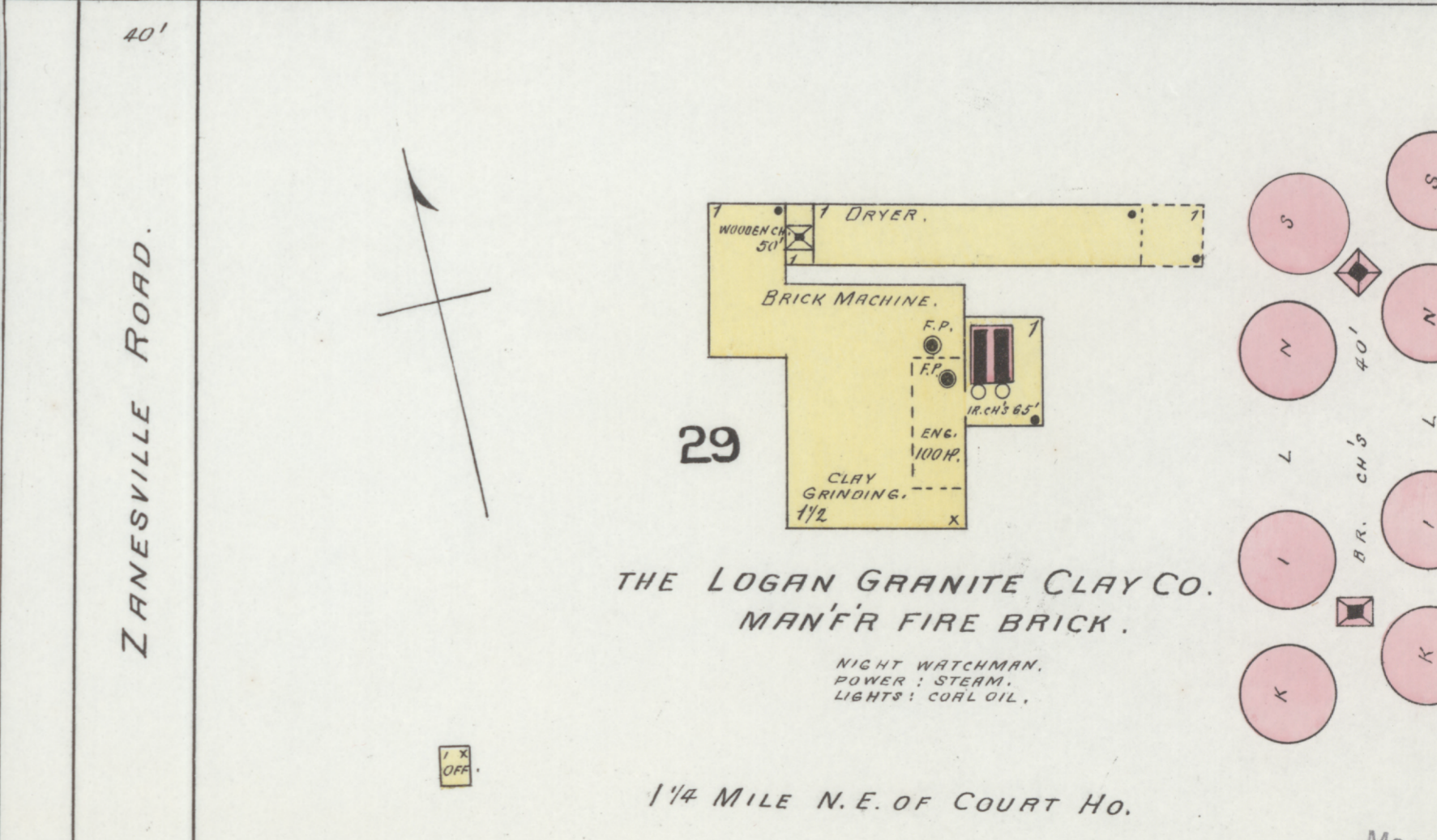
ZANESVILLE ROAD.

28

THE LOGAN FIRE CLAY CO.



2 NIGHT WATCHMEN. POWER & HEAT: STEAM. LIGHTS: WATCHMAN LANTERN. 5 BLS. & 1 DDZ. WATER PAIS. ELEV. TANK CAP. 110 BLS. WATER TAKEN FROM DRIVEN WELLS.



ZANESVILLE ROAD.

29

THE LOGAN GRANITE CLAY CO. MAN'F'R FIRE BRICK.

NIGHT WATCHMAN. POWER: STEAM. LIGHTS: COAL OIL.

1 1/4 MILE N.E. OF COURT HO.

GEO. FOX SLAUGHTER HO.

