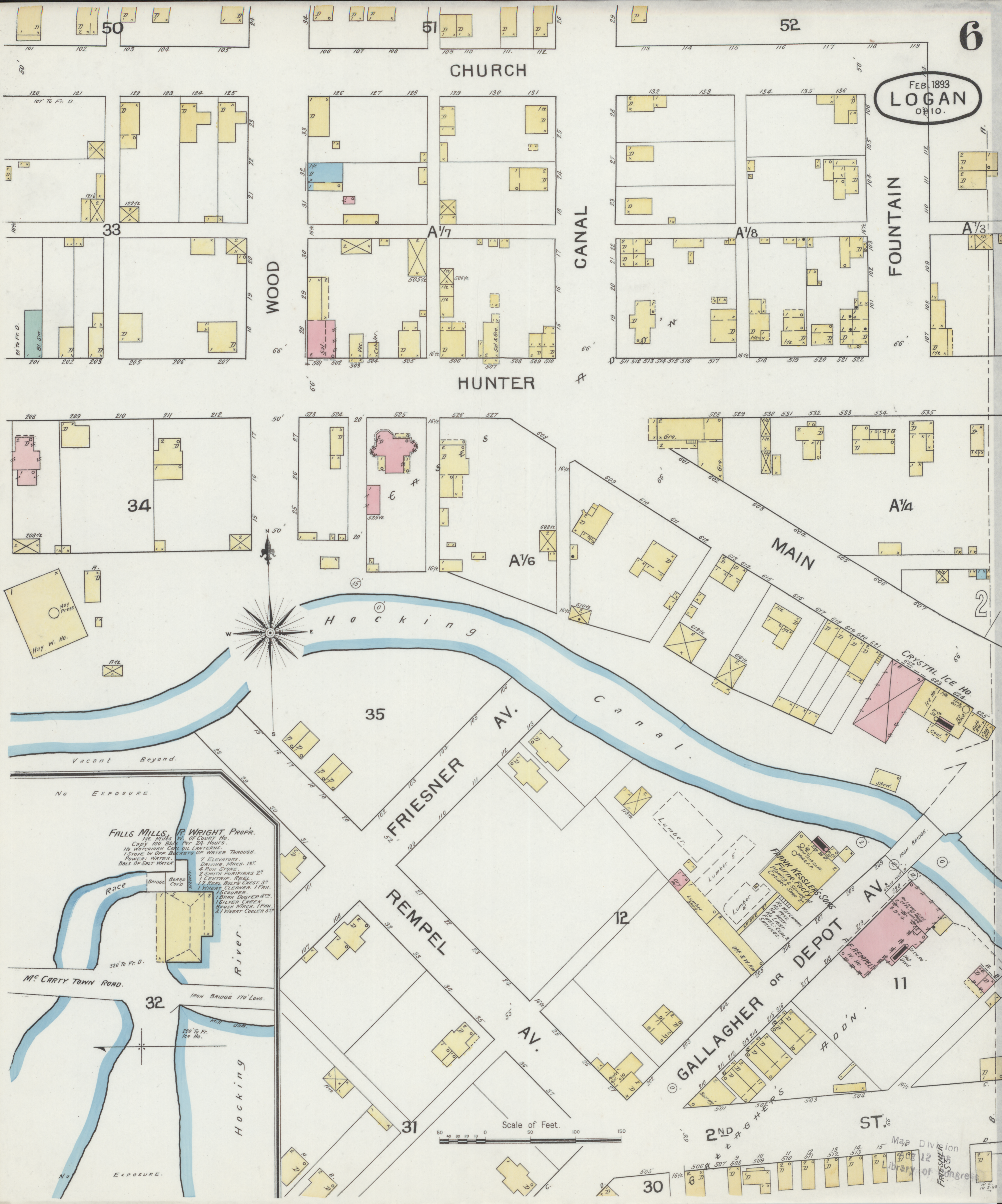


FEB. 1893  
LOGAN  
OF 10.



CHURCH

HUNTER

WOOD

CANAL

FOUNTAIN

MAIN

FRIESNER AV.

REPEL AV.

GALLAGHER OR DEPOT AV.

2ND ST.

HOCKING

CANAL

50

51

52

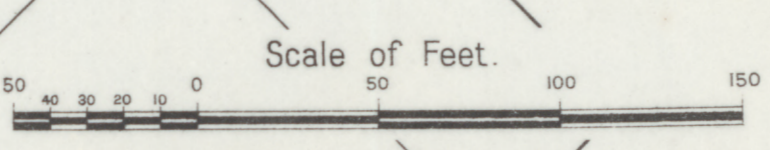
33

34

35

32

30



FALLS MILLS, R. WRIGHT PROP.  
1 1/2 MILLERS, W. OF COURT HO.  
COPY 100 BBL'S PER 24 HOURS.  
NO WATCHMAN, COAL OIL LANTERNS.  
1 STOVE IN ONE, BUCKETS OF WATER THROUGH.  
POWER: WATER.  
BOLS OF SALT WATER.  
7 ELEVATORS.  
DRIVING MACH. 12".  
2 RUN STONES.  
2 SMITH PURIFIERS 2".  
1 CENTRIF. REEL.  
1 REEL BOLTS CHEST 3".  
1 WHEAT CLEANER, 1 FRN.  
1 SCOURER.  
1 BRN DUSTER 4".  
1 OLIVER CREEK.  
BRUSH MTRCH. 1 FRN.  
1 WHEAT COOLER 5".

FRANK KESSLER'S SONS  
LUMBER & SHEDS  
No. 217  
No. 218  
No. 219  
No. 220  
No. 221  
No. 222  
No. 223  
No. 224  
No. 225  
No. 226  
No. 227  
No. 228  
No. 229  
No. 230  
No. 231  
No. 232  
No. 233  
No. 234  
No. 235  
No. 236  
No. 237  
No. 238  
No. 239  
No. 240  
No. 241  
No. 242  
No. 243  
No. 244  
No. 245  
No. 246  
No. 247  
No. 248  
No. 249  
No. 250  
No. 251  
No. 252  
No. 253  
No. 254  
No. 255  
No. 256  
No. 257  
No. 258  
No. 259  
No. 260  
No. 261  
No. 262  
No. 263  
No. 264  
No. 265  
No. 266  
No. 267  
No. 268  
No. 269  
No. 270  
No. 271  
No. 272  
No. 273  
No. 274  
No. 275  
No. 276  
No. 277  
No. 278  
No. 279  
No. 280  
No. 281  
No. 282  
No. 283  
No. 284  
No. 285  
No. 286  
No. 287  
No. 288  
No. 289  
No. 290  
No. 291  
No. 292  
No. 293  
No. 294  
No. 295  
No. 296  
No. 297  
No. 298  
No. 299  
No. 300

Map Division  
Library of Congress