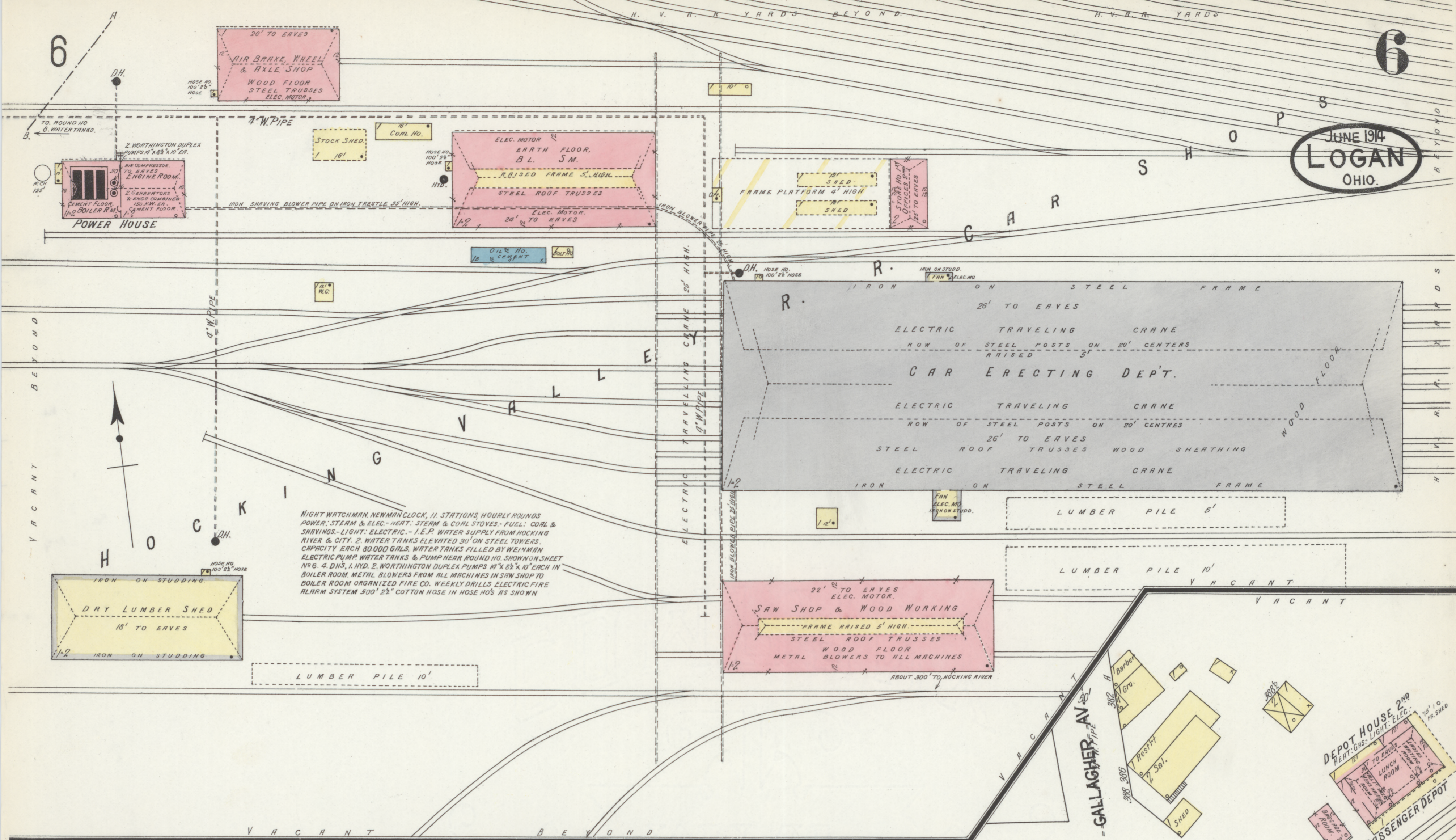
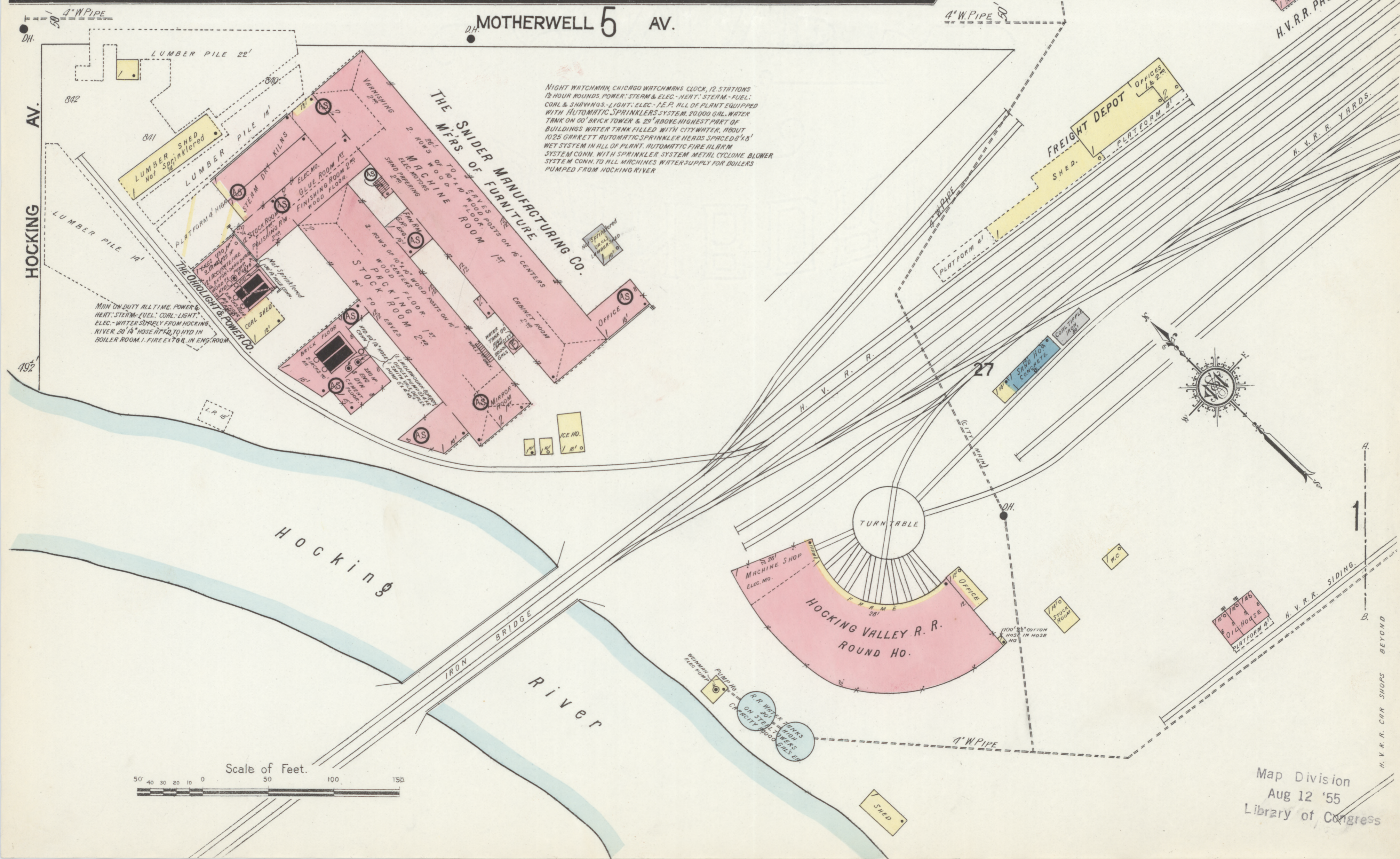


JUNE 1914
LOGAN
OHIO.

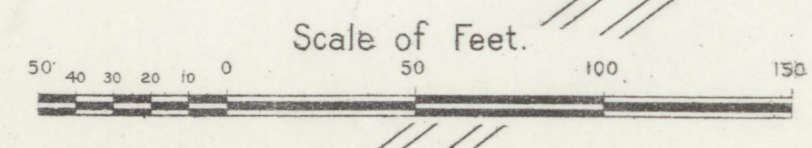


NIGHT WATCHMAN, NEWMAN CLOCK, 11 STATIONS, HOURLY ROUNDS
 POWER: STEAM & ELEC. HEAT: STEAM & COAL STOVES: FUEL: COAL &
 SHAWINGS: LIGHT: ELEC. I.E.P. WATER SUPPLY FROM HOCKING
 RIVER & CITY. 2 WATER TANKS ELEVATED 30' ON STEEL TOWERS.
 CAPACITY EACH 80,000 GALS. WATER TANKS FILLED BY WEINMAN
 ELECTRIC PUMP WATER TANKS & PUMP NEAR ROUND NO. SHOWN ON SHEET
 NO. 6. 4 D.H.S. 1 HYD. 2 WORTHINGTON DUPLIX PUMPS 12" X 8 1/2" X 10" EACH IN
 BOILER ROOM. METAL BLOWERS FROM ALL MACHINES IN SAW SHOP TO
 BOILER ROOM ORGANIZED FIRE CO. WEEKLY DRILLS. ELECTRIC FIRE
 ALARM SYSTEM 500' 2 1/2" COTTON HOSE IN HOSE NOS. AS SHOWN

MOTHERWELL 5 AV.



NIGHT WATCHMAN, CHICAGO WATCHMANS CLOCK, 12 STATIONS
 2 HOUR ROUNDS POWER: STEAM & ELEC. HEAT: STEAM: FUEL:
 COAL & SHAWINGS: LIGHT: ELEC. I.E.P. ALL OF PLANT EQUIPPED
 WITH AUTOMATIC SPRINKLERS SYSTEM 20,000 GAL. WATER
 TANK ON 60' BRICK TOWER & 20' ABOVE HIGHEST PART OF
 BUILDINGS WATER TANK FILLED WITH CITY WATER. ABOUT
 1025 GARRETT AUTOMATIC SPRINKLER HEADS SPACED 5' X 5'
 WET SYSTEM IN ALL OF PLANT. AUTOMATIC FIRE ALARM
 SYSTEM CONN. WITH SPRINKLER SYSTEM METAL CYCLONE BLOWER
 SYSTEM CONN. WITH SPRINKLER WATER SUPPLY FOR BOILERS
 PUMPED FROM HOCKING RIVER



Map Division
 Aug 12 '55
 Library of Congress