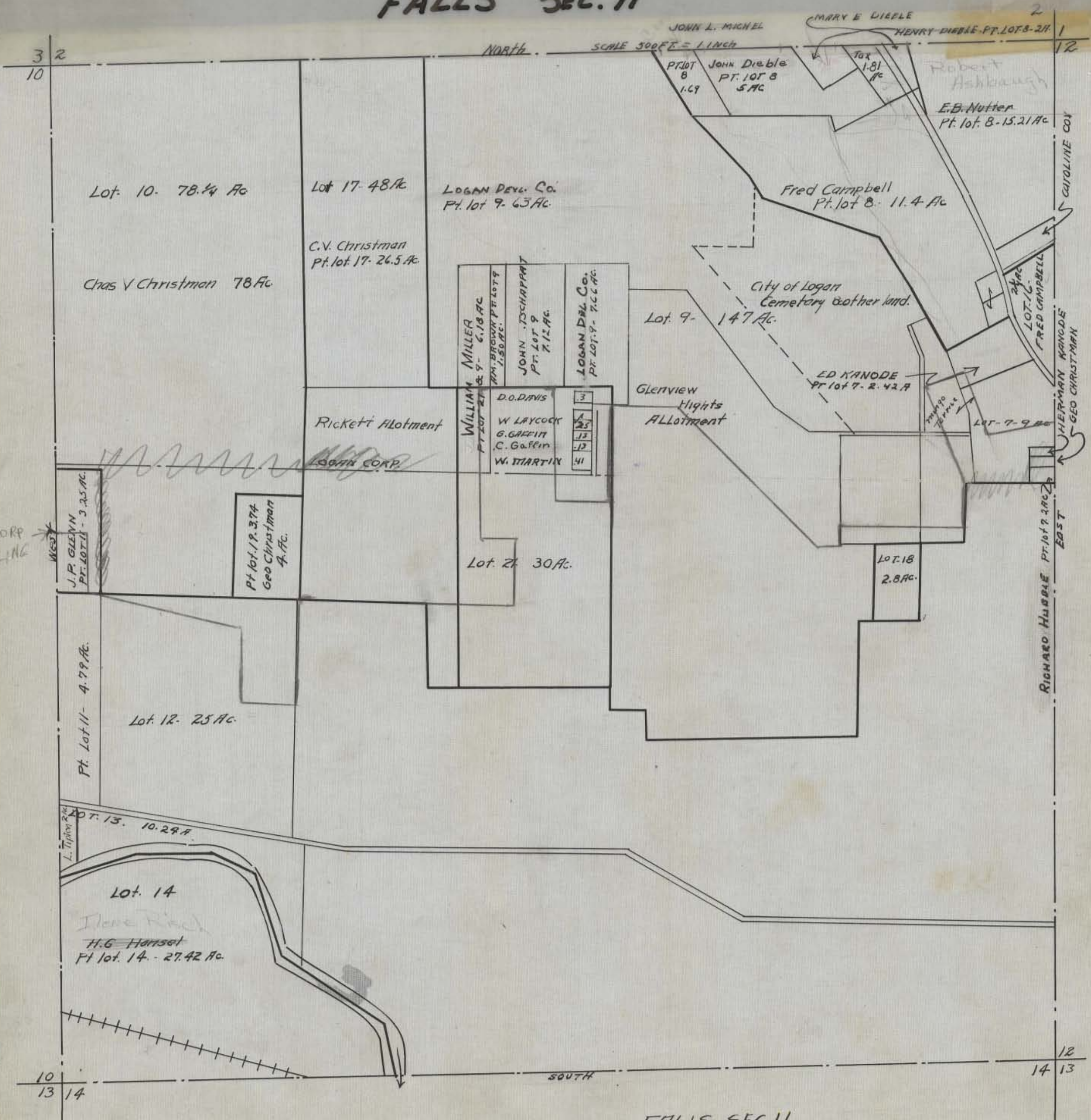


HOCKING COUNTY STATE OHIO

SECTION II, TWP. 14 RANGE 17

FALLS SEC. 11



JOHN L. MICHEL
 MARY E DIEBLE
 HENRY DIEBLE PT. LOT 8-211

SCALE 500 FT = 1 INCH

NORTH

2

12

3
10

Lot 10. 78.4 Ac

Lot 17- 48 Ac

LOGAN DEVL. CO.
 Pt. lot 9- 63 Ac.

PT. LOT 8
 1.69
 JOHN Dieble
 PT. LOT 8
 5 AC

Tax
 1.81
 Ac

Robert
 Ashbaugh
 E.B. Nutter
 Pt. lot 8- 15.21 Ac

Chas V Christman 78 Ac

C.V. Christman
 Pt. lot 17- 26.5 Ac

Fred Campbell
 Pt. lot 8- 11.4 Ac

WILLIAM MILLER
 PT. LOT 21 & 9- 6.18 AC
 W.M. BROWN PT. LOT 9
 1.50 AC.
 JOHN T. SCHAPPEY
 PT. LOT 9
 7.12 AC.
 LOGAN DEVL. CO.
 PT. LOT 9- 7.66 AC.

Lot 9- 147 Ac.

City of Logan
 Cemetery & other land.

ED KANODE
 PT. LOT 7- 2.42 A

Glenview
 Heights
 ALLOTMENT

Rickett's Allotment

D.O. DAVIS	3
W. LAYCOCK	1
S. GARRITT	13
C. GAFFIN	12
W. MARTIN	41

LOT 7- 9 AC

HERMAN KANODE
 GEO CHRISTMAN

J.P. GLENN
 PT. LOT 11 - 3.25 AC.

Pt. lot 17- 3.74
 Geo Christman
 4 Ac.

Lot 21 30 Ac.

LOT 18
 2.8 AC.

RICHARD HUBBLE PT. LOT 2- 2 AC
 EAST

Pt. Lot 11- 4.79 Ac.

Lot 12- 25 Ac.

LOT 13- 10.29 A

Lot 14

H.G. Hansel
 Pt. lot 14- 27.42 Ac.

SOUTH

12
14
13

10
13
14

FALLS SEC. 11