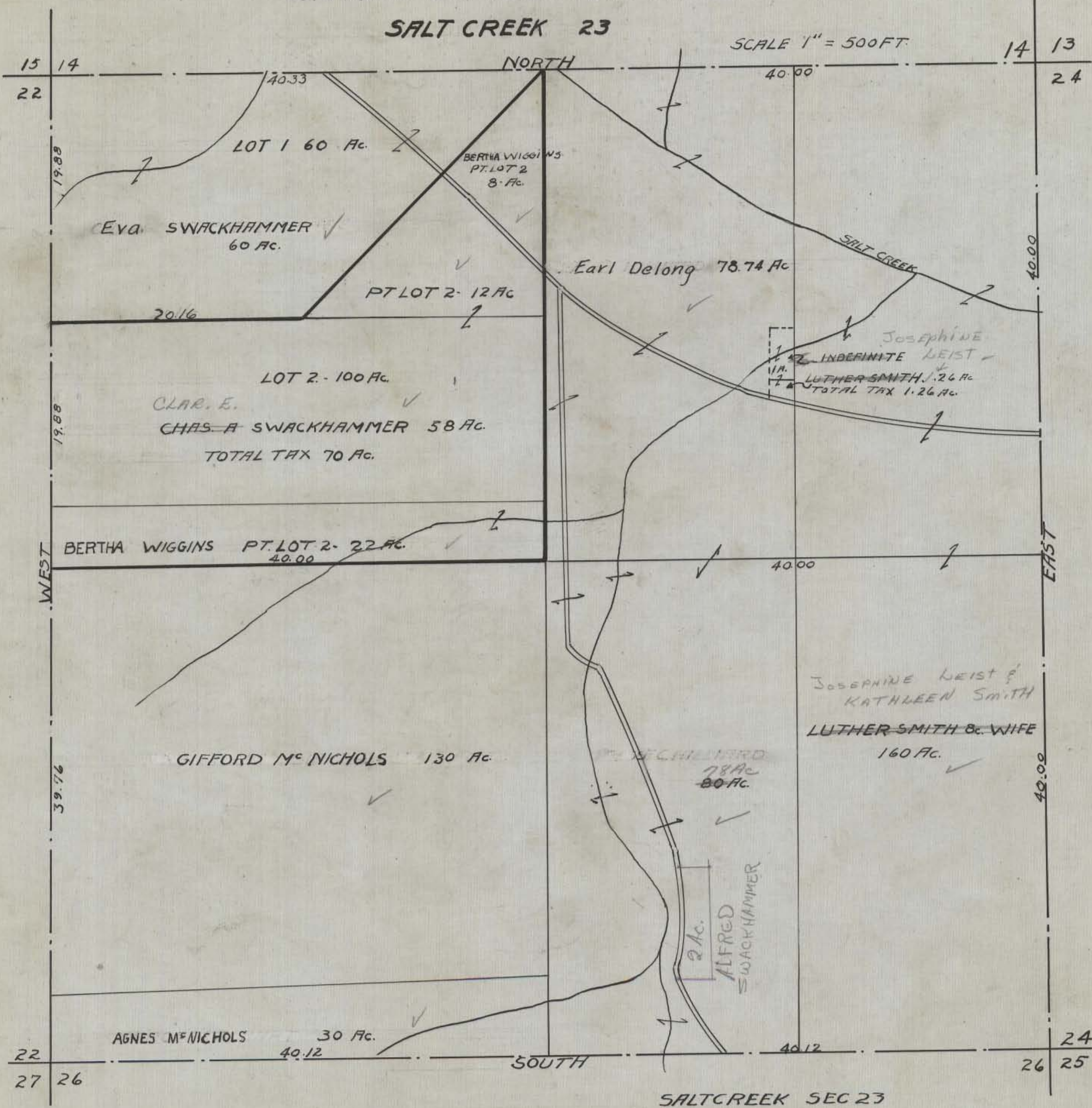


HOCKING COUNTY STATE OHIO
SECTION 23 TWP 11 RANGE 19

SALT CREEK 23

SCALE 1" = 500 FT.



LOT 1 60 Ac.

Eva SWACKHAMMER
60 Ac.

BERTHA WIGGINS
PT. LOT 2
8 Ac.

Earl Delong 78.74 Ac.

PT LOT 2- 12 Ac

LOT 2- 100 Ac.

CLAR. E.
CHAS. A SWACKHAMMER 58 Ac.
TOTAL TAX 70 Ac.

BERTHA WIGGINS PT. LOT 2- 22 Ac.
40.00

GIFFORD M^c NICHOLS 130 Ac.

JOSEPHINE LEIST &
KATHLEEN SMITH
LUTHER SMITH & WIFE
160 Ac.

ALFRED SWACKHAMMER
78 Ac.
80 Ac.

2 Ac.
ALFRED
SWACKHAMMER

AGNES M^c NICHOLS 30 Ac.

SALTCREEK SEC 23