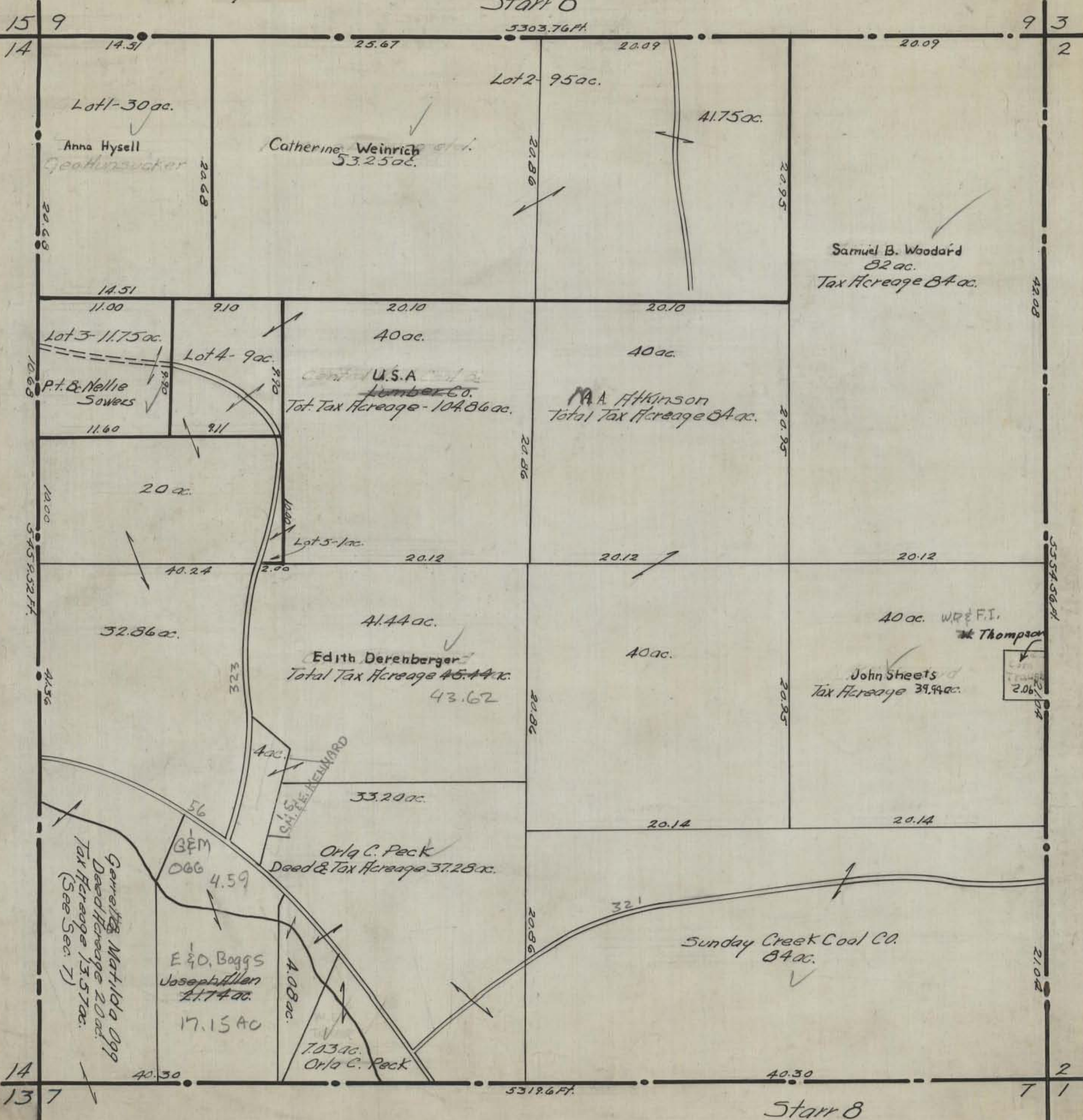


HOCKING COUNTY STATE OHIO
SECTION 8 TWP. 12 RANGE 16

Orig. 1943

Starr 8



Samuel B. Woodard
82 ac.
Tax Acreage 84 ac.

Catherine Weinrich
53.25 ac.

Lot 1-30 ac.
Anna Hysell
Geathrusucker

Lot 3-11.75 ac.
P. B. Nellie Sowers

Lot 4-9 ac.

U.S.A. Lumber Co.
Total Tax Acreage - 104.86 ac.

M.A. Atkinson
Total Tax Acreage 84 ac.

Edith Derenberger
Total Tax Acreage 45.44 ac.
43.62

John Sheets
Tax Acreage 39.94 ac.

Orla C. Peck
Deed & Tax Acreage 37.28 ac.

Sunday Creek Coal Co.
84 ac.

E. & D. Boggs
Joseph Allen
21.74 ac.
17.15 ac.

Gerrett & Matilda Ogg
Deed Acreage 20 ac.
Tax Acreage 13.57 ac.
(See Sec. 7)

5319.6 FT.

5303.76 FT.

15 9
14

9 3
2

14
13 7

7 1

Starr 8