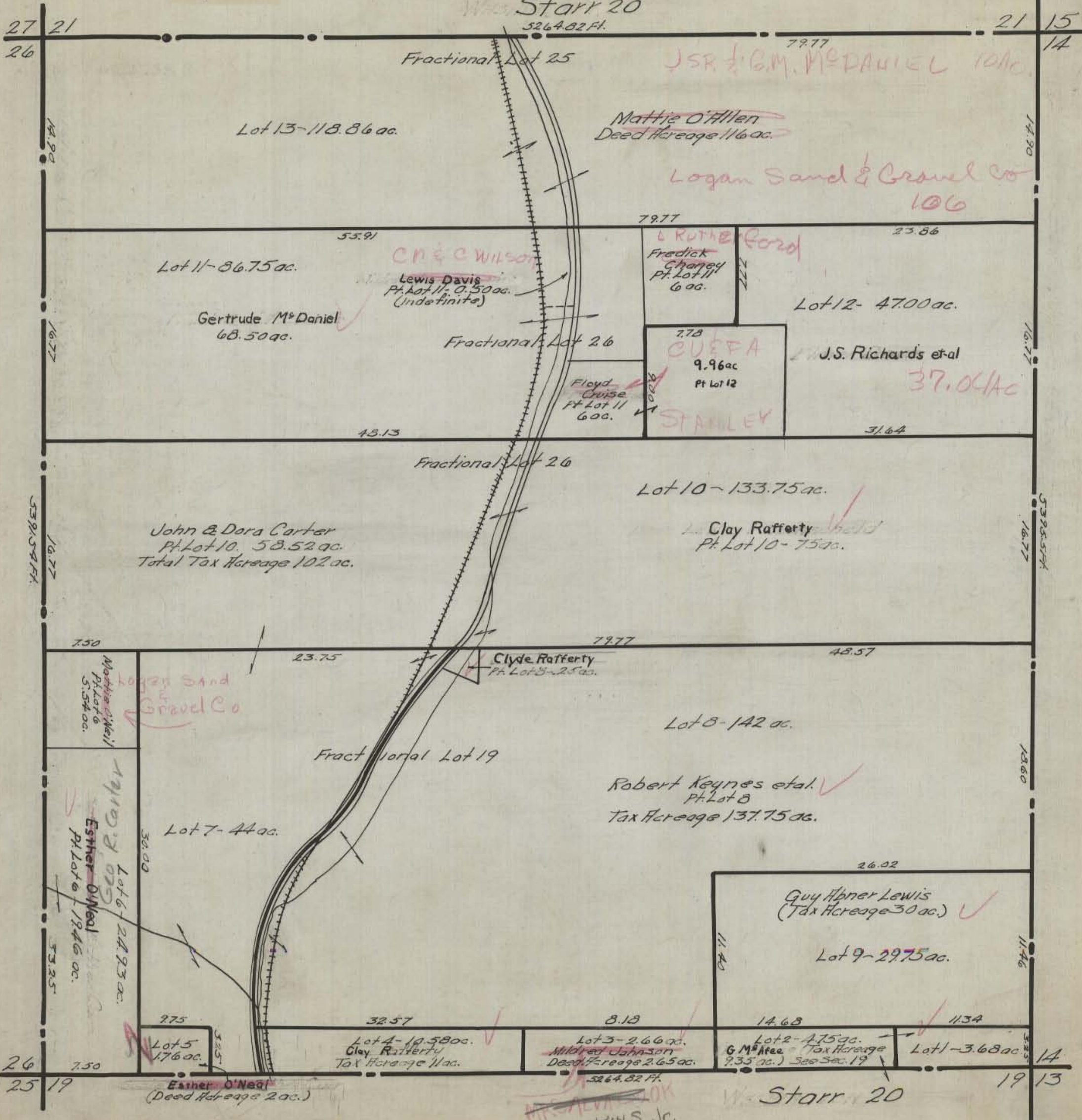


HOCKING COUNTY STATE OHIO  
SECTION 20 TWP 12 RANGE 16

Org. 1943

Starr 20  
5264.82 Ft.



27 21  
26

21 15  
14

26 19

14 13

LB. WILKINS Jr.

Starr 20

Esther O'Neal  
(Deed Hereage 2 ac.)

Lot 2 - 4.75 ac.  
G.M. Afee (Tax Hereage 9.35 ac.) See Sec. 19

Lot 3 - 2.66 ac.  
Mildred Johnson  
Deed Hereage 2.65 ac.

Lot 4 - 19.58 ac.  
Clay Rafferty  
Tax Hereage 11 ac.

Lot 5 - 17.6 ac.

Lot 1 - 3.68 ac.

Lot 2 - 4.75 ac.

Lot 3 - 2.66 ac.

Lot 4 - 19.58 ac.

Lot 5 - 17.6 ac.

Lot 9 - 29.75 ac.

Guy Abner Lewis  
(Tax Hereage 30 ac.)

Robert Keynes et al.  
Pt. Lot 8  
Tax Hereage 137.75 ac.

Lot 8 - 142 ac.

Clyde Rafferty  
Pt. Lot 8 - 25 ac.

Lot 7 - 44 ac.

Logan Sand & Gravel Co  
Mattie O'Neil  
Pt. Lot 6  
5.54 ac.

J.S. Richards et al  
37.04 ac

7.78  
CUEFA  
9.96 ac  
Pt Lot 12

Floyd Cruise  
Pt Lot 11  
6 ac.

C.M. & C. Wilson  
Lewis Davis  
Pt. Lot 11 - 0.50 ac.  
(Indefinite)

Gertrude M. Daniel  
68.50 ac.

Lot 11 - 86.75 ac.

Mattie O'Allen  
Deed Hereage 116 ac.

Logan Sand & Gravel Co  
106

L. RUTHERFORD  
Fredrick Charney  
Pt. Lot 11  
6 ac.

Lot 12 - 47.00 ac.

Lot 13 - 118.86 ac.

Fractional Lot 25

Fractional Lot 26

Fractional Lot 26

John & Dora Carter  
Pt. Lot 10 - 58.52 ac.  
Total Tax Hereage 102 ac.

Lot 10 - 133.75 ac.

Clay Rafferty  
Pt. Lot 10 - 75 ac.

Fract. Lot 19

23.75

7.77

48.57

7.50

26.02

14.68

8.18

32.57

9.75

7.50

11.46

13.60

16.77

16.77

14.90

14.90

16.77

16.77

53.91-54.41

53.25

7.50

5264.82 Ft.