

HOCKING COUNTY STATE OHIO

Original Corrected AWS June 10 1938

SECTION No. 3 TWP. 13 RANGE 15

WARD NORTH

SCALE: 500 FEET TO 1 INCH

Trimble Twp. Athens Co 34

33 Trimble Twp. Athens Co.

EAST

WEST

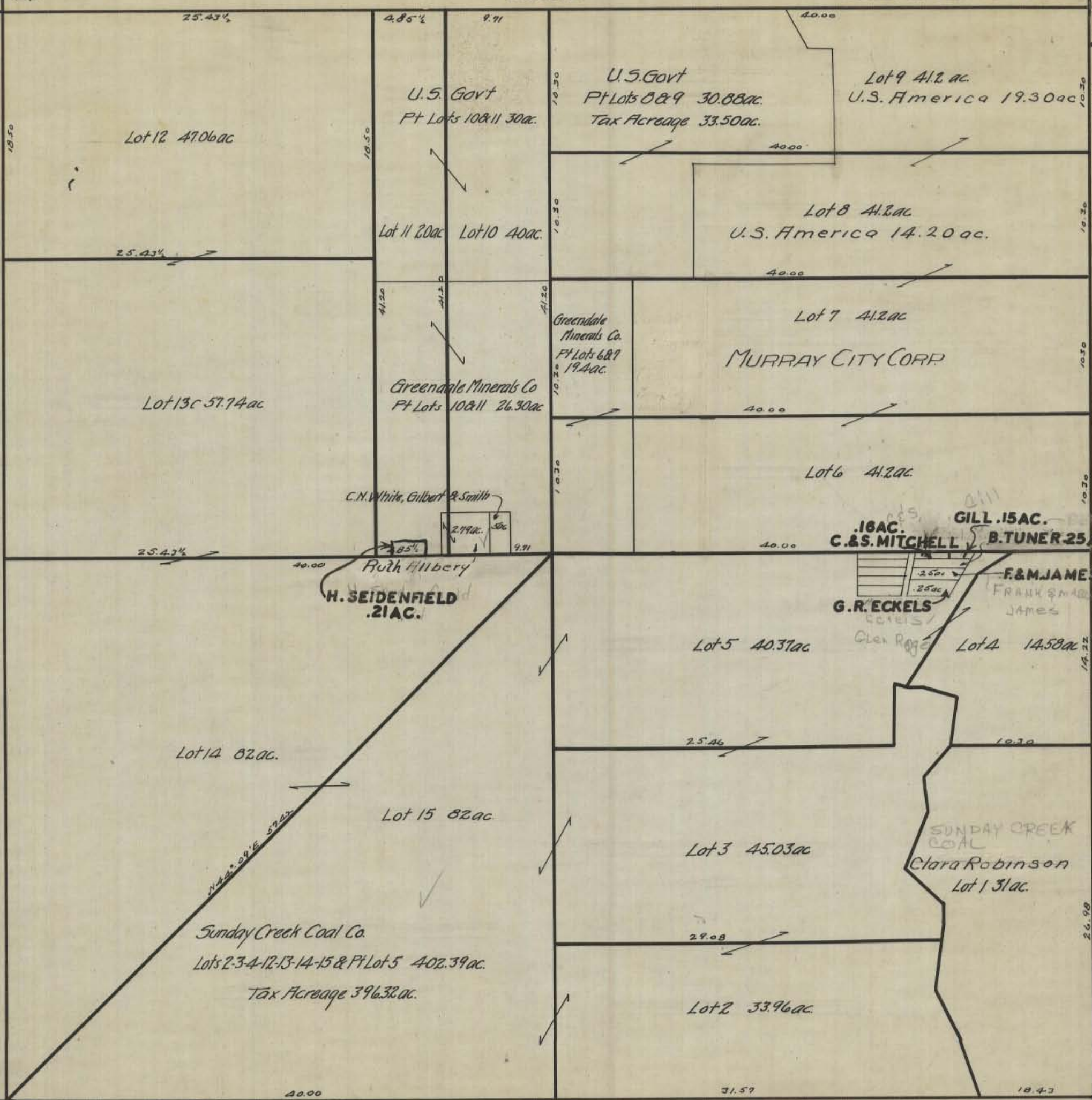
10 9

8 2

SOUTH

WARD 3

32 Trimble Twp. Athens Co.



Lot 12 47.06 ac

Lot 13c 57.74 ac

Lot 14 82 ac

Lot 15 82 ac

U.S. Govt
Pt Lots 10 & 11 30 ac.

Lot 11 20 ac Lot 10 40 ac

Greendale Minerals Co
Pt Lots 10 & 11 26.30 ac

H. SEIDENFIELD
.21 ac.

Sunday Creek Coal Co.
Lots 2-3-4-12-13-14-15 & Pt Lot 5 402.39 ac.
Tax Acreage 396.32 ac.

U.S. Govt
Pt Lots 8 & 9 30.88 ac.
Tax Acreage 33.50 ac.

Lot 9 41.2 ac
U.S. America 19.30 ac

Lot 8 41.2 ac
U.S. America 14.20 ac.

Lot 7 41.2 ac
MURRAY CITY CORP.

Lot 6 41.2 ac

Lot 5 40.37 ac

Lot 3 45.03 ac

Lot 2 33.96 ac

GILL .15 ac.
B. TUNER 25 ac.

G.R. ECKELS
Coles / Glen Ridge

F. & M. JAMES
FRANK JAMES

Lot 4 14.58 ac

SUNDAY CREEK COAL
Clara Robinson
Lot 1 31 ac.