

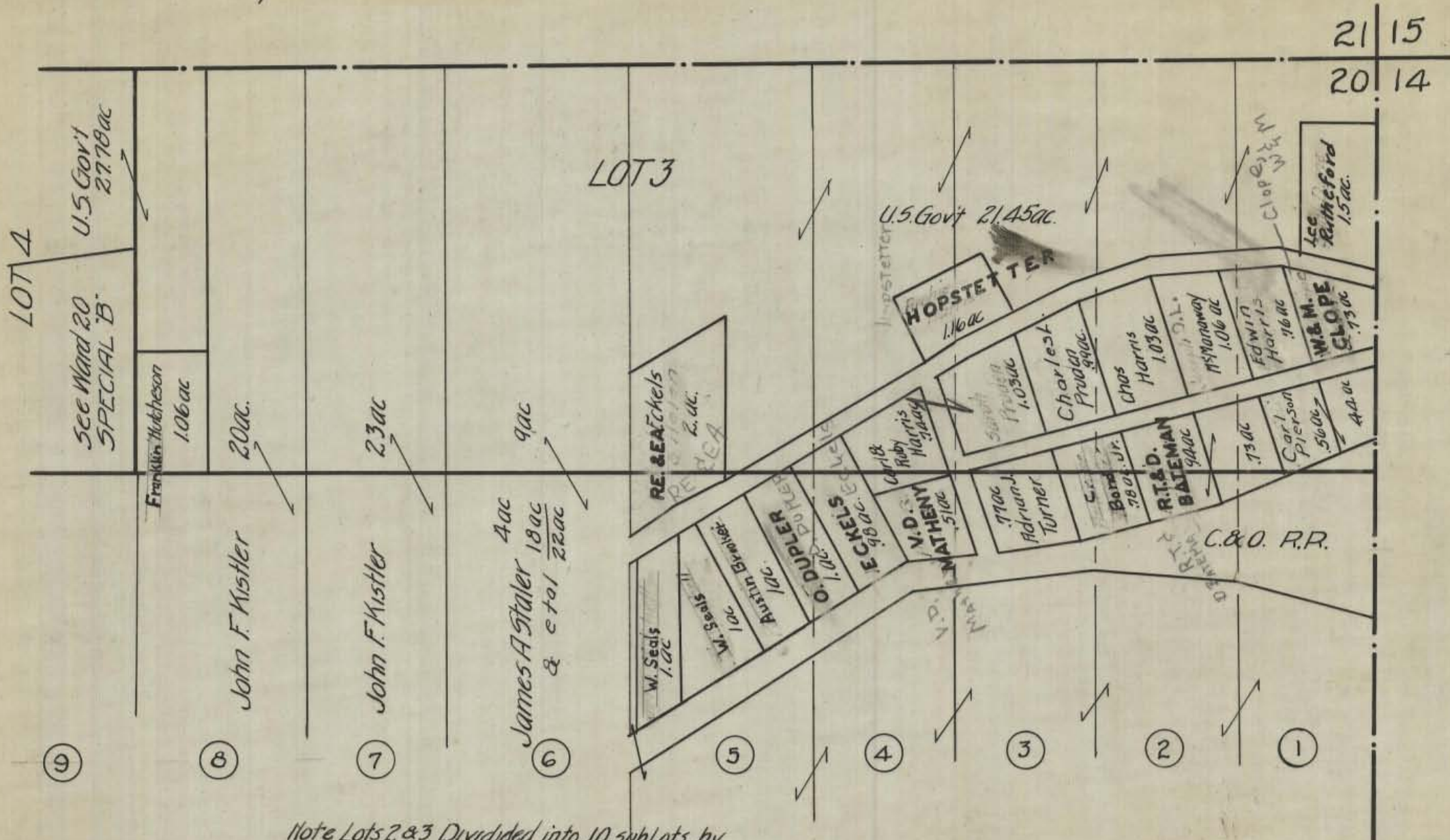
HOCKING COUNTY STATE OHIO

SECTION No. 20 TWP. 13 RANGE 15

SCALE: 300 FEET TO 1 INCH

WARD 20 SPECIAL "C"

Orig. A.W.S Nov 25 1938



Note Lots 2 & 3 Divided into 10 subLots by Judge Court of Common Pleas. Vol. 8 - pg 234-248.

LOT 2

WARD 20 SPECIAL "C"