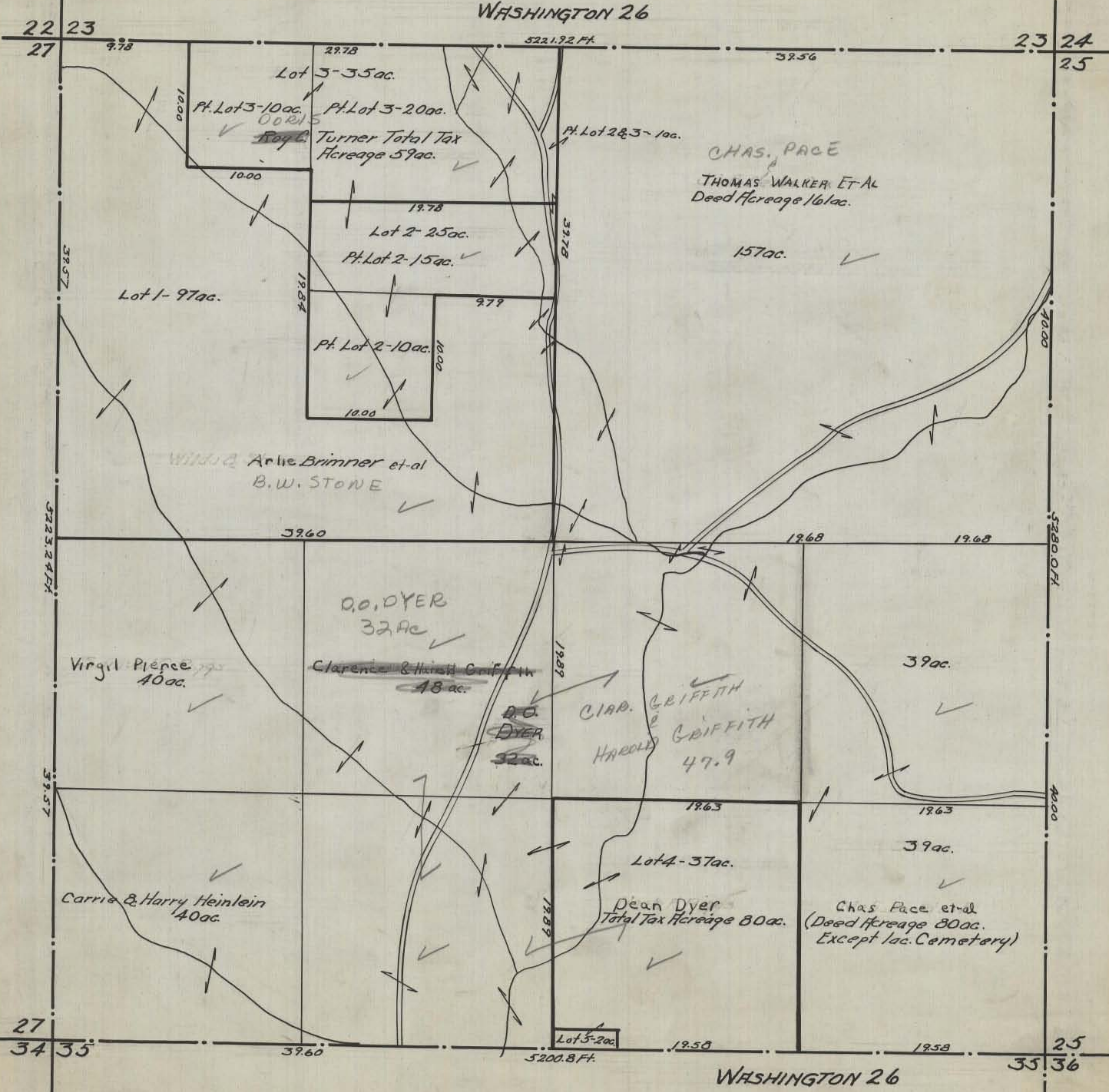


HOCKING COUNTY STATE OHIO  
SECTION 26 TWP. 13 RANGE 17

Org. 1943

WASHINGTON 26



22 23 27 9.78 29.78 5221.92 Ft. 32.56 23 24 25

Lot 3-35 ac.  
Pt. Lot 3-10 ac. ✓  
Pt. Lot 3-20 ac. ✓  
Roy C. Turner Total Tax Acreage 59 ac. ✓  
Pt. Lot 2 & 3-1 ac. ✓  
CHAS. PACE  
THOMAS WALKER ET AL  
Deed Acreage 161 ac.  
157 ac. ✓  
Lot 2-25 ac.  
Pt. Lot 2-15 ac. ✓  
Lot 1-97 ac.  
Pt. Lot 2-10 ac. ✓  
Wm & Arlie Brimmer et al  
B.W. STONE ✓

39.60 19.68 19.68 5280.0 Ft.  
O.O. DYER  
32 ac. ✓  
Clarence & Harold Griffith  
48 ac. ✓  
D.O. DYER  
32 ac. ✓  
CHAS. GRIFFITH  
&  
HAROLD GRIFFITH  
47.9 ✓  
39 ac. ✓  
39 ac. ✓  
39 ac. ✓  
Lot 4-37 ac.  
Dean Dyer  
Total Tax Acreage 80 ac. ✓  
Chas Pace et al  
(Deed Acreage 80 ac.  
Except 1 ac. Cemetery) ✓  
Virgil Pience  
40 ac. ✓  
Carrie & Harry Heinlein  
40 ac. ✓

27 34 35 39.60 5200.8 Ft. 19.50 19.58 25 35 36  
WASHINGTON 26