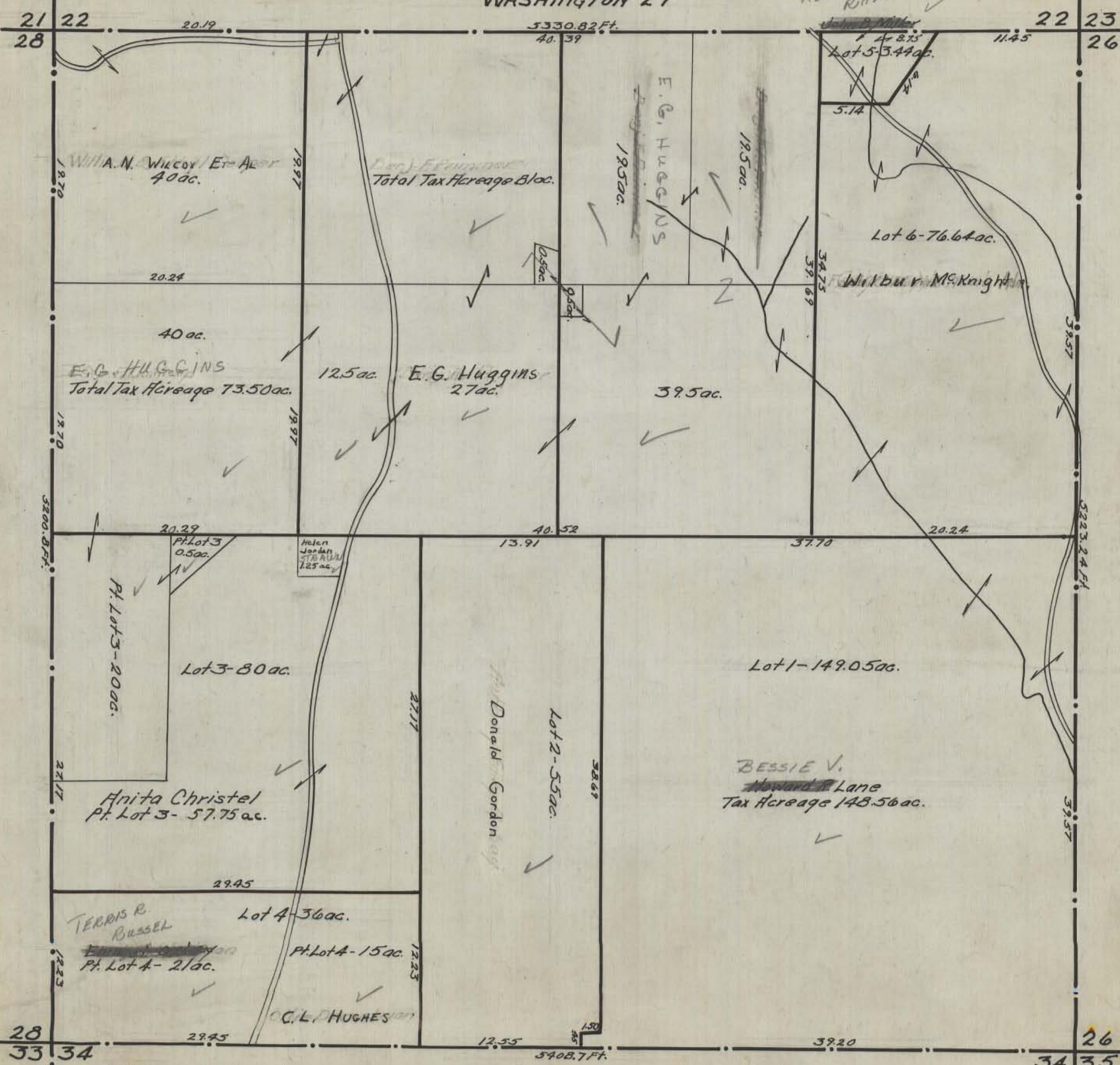


HOCKING COUNTY STATE OHIO
SECTION 27 TWP 13 RANGE 17

Org. 1945

WASHINGTON 27

KENNETH RHE INSCHELD



21 22 20.19 5330.82 Ft. 40.39 22 23 28 26 11.45 26

WILLIAM N. WILCOX / ET AL
40 ac.

Total Tax Acreage 81 ac.

Lot 5 - 3.44 ac.

5.14

Lot 6 - 76.64 ac.

Wilbur McKnight

E. G. HUGGINS
Total Tax Acreage 73.50 ac.

12.5 ac.

E. G. Huggins
27 ac.

39.5 ac.

20.29

Pt. Lot 3
0.5 ac.

Helen Jordan
STRAVON
125 ac.

40.52

13.91

37.70

20.24

Pt. Lot 3 - 20 ac.

Lot 3 - 80 ac.

Donald Gordon

Lot 2 - 55 ac.

Lot 1 - 149.05 ac.

BESSIE V.
Howard Lane
Tax Acreage 148.56 ac.

Anita Christel
Pt. Lot 3 - 57.75 ac.

TERRIS R.
RUSSEL

Lot 4 - 36 ac.

Pt. Lot 4 - 15 ac.

Pt. Lot 4 - 21 ac.

C. L. HUGHES

28 33 34 29.45 12.55 5408.7 Ft. 39.20 26 34 35

WASHINGTON 27