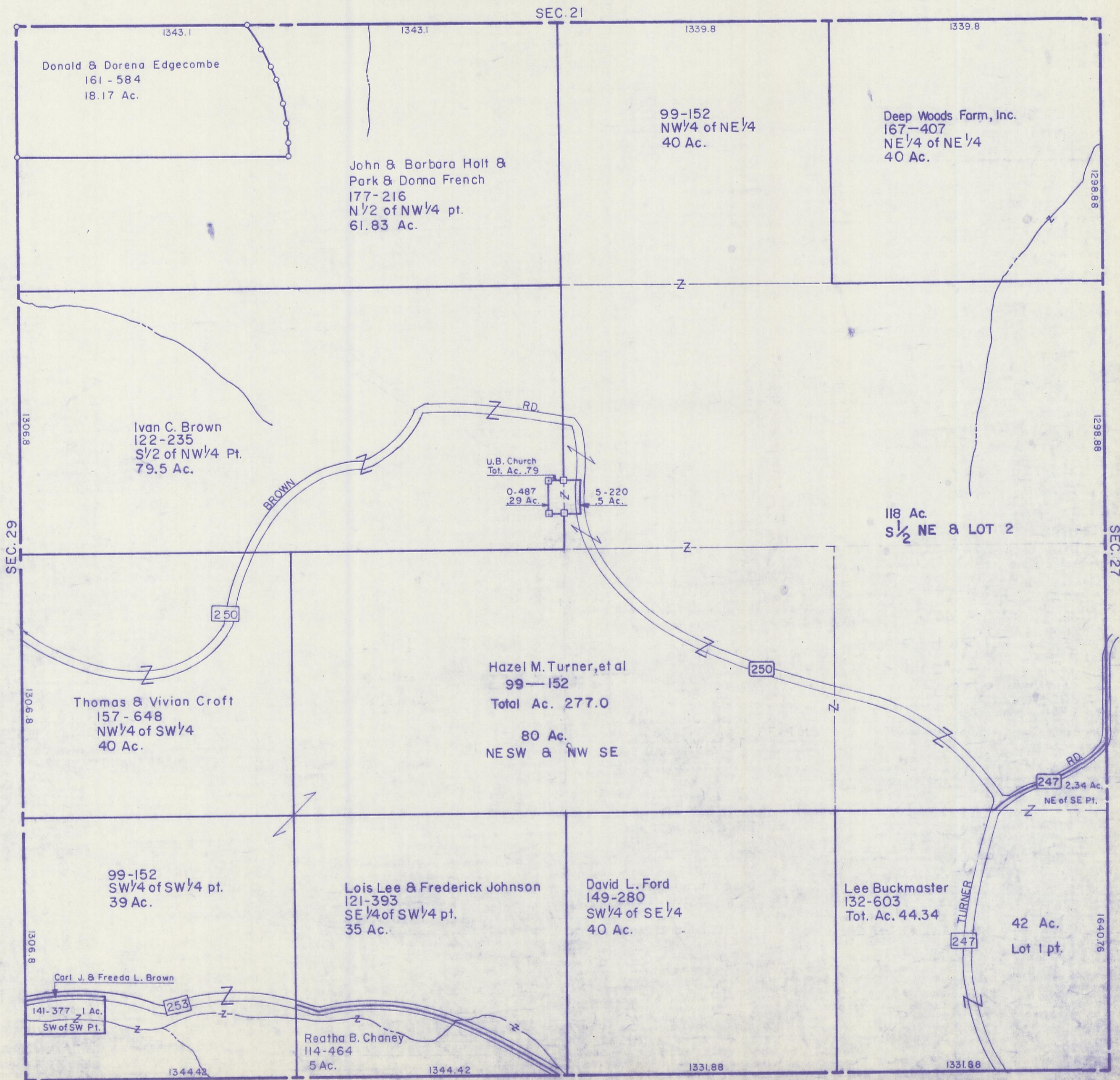


HOCKING COUNTY

Sec. 28 T11 R18

BENTON TWP.

Scale: 1"=400'



Donald & Dorena Edgecombe
161 - 584
18.17 Ac.

John & Barbara Holt &
Park & Donna French
177-216
N 1/2 of NW 1/4 pt.
61.83 Ac.

99-152
NW 1/4 of NE 1/4
40 Ac.

Deep Woods Farm, Inc.
167-407
NE 1/4 of NE 1/4
40 Ac.

Ivan C. Brown
122-235
S 1/2 of NW 1/4 Pt.
79.5 Ac.

U.B. Church
Tot. Ac. .79
0.487
.29 Ac.
5.220
.5 Ac.

118 Ac.
S 1/2 NE & LOT 2

Thomas & Vivian Croft
157 - 648
NW 1/4 of SW 1/4
40 Ac.

Hazel M. Turner, et al
99-152
Total Ac. 277.0

80 Ac.
NESW & NW SE

99-152
SW 1/4 of SW 1/4 pt.
39 Ac.

Lois Lee & Frederick Johnson
121-393
SE 1/4 of SW 1/4 pt.
35 Ac.

David L. Ford
149-280
SW 1/4 of SE 1/4
40 Ac.

Lee Buckmaster
132-603
Tot. Ac. 44.34

42 Ac.
Lot 1 pt.

Carl J. & Freeda L. Brown
141-377 - 1 Ac.
SW of SW Pt.

Reatha B. Chaney
114-464
5 Ac.

SEC. 28