

HOCKING COUNTY

FALLS GORE

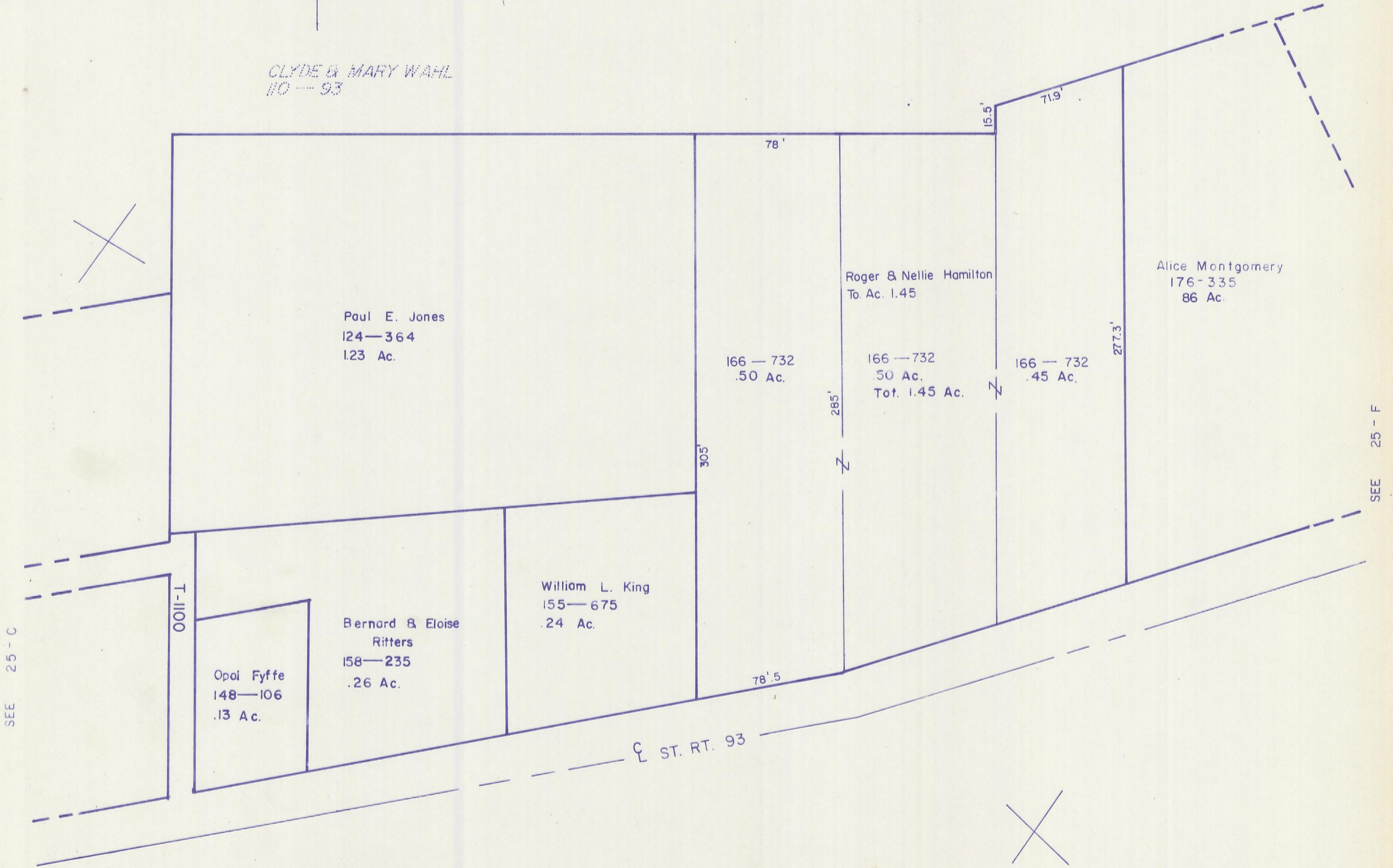
SEC. 25 T 14 R 16

Scale 1" = 50'

25 - E



CLYDE & MARY WAHL
110 - 93



SEE 25 - C

0011-1

Paul E. Jones
124-364
.123 Ac.

166 - 732
.50 Ac.

Roger & Nellie Hamilton
To Ac. 1.45

166 - 732
.50 Ac.
Tot. 1.45 Ac.

166 - 732
.45 Ac.

Alice Montgomery
176-335
86 Ac.

Bernard & Eloise
Ritters
158-235
.26 Ac.

William L. King
155-675
.24 Ac.

Opal Fyffe
148-106
.13 Ac.

E. ST. RT. 93

SEE 25 - F

25 - E