

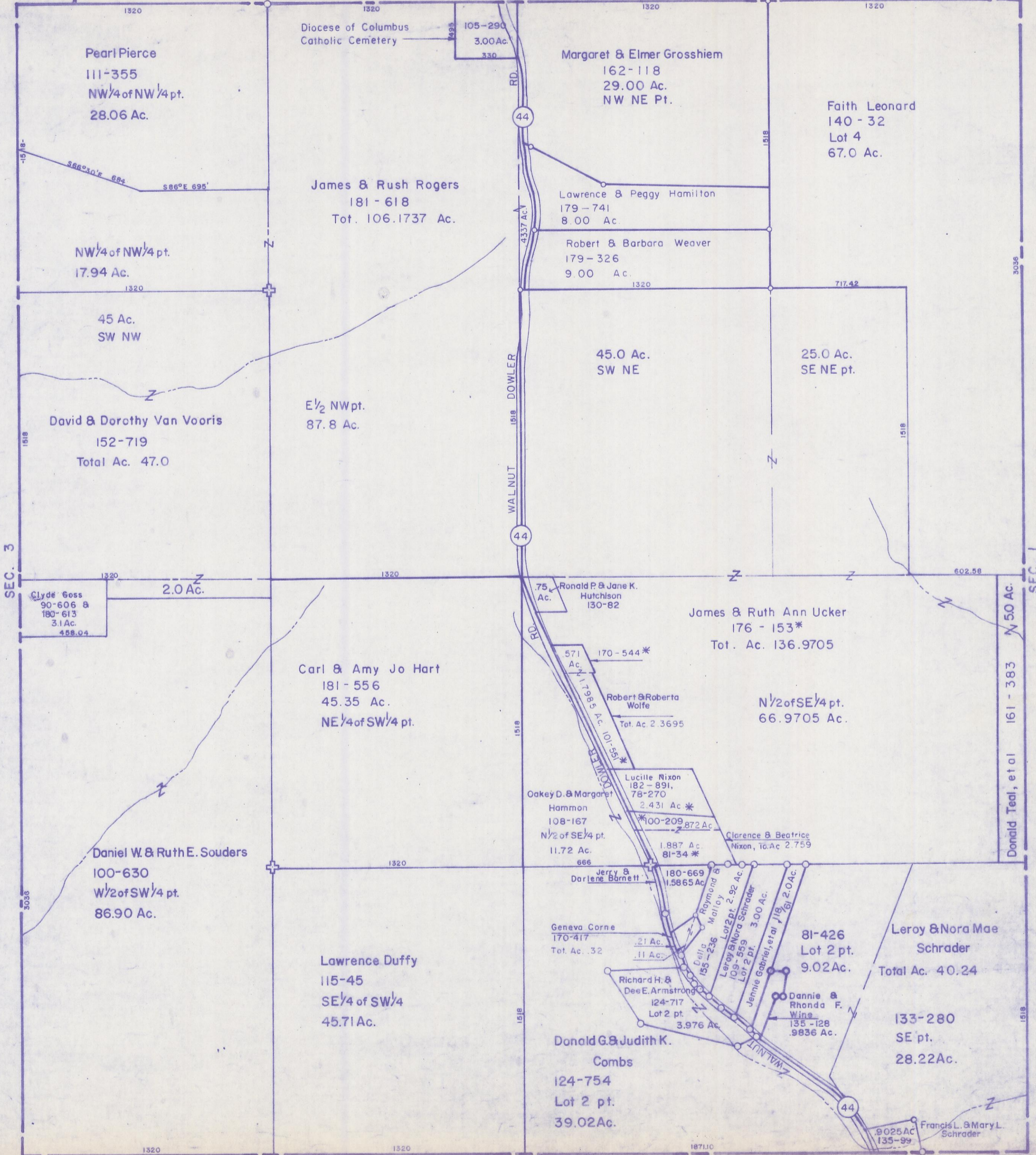
SCALE: 1"=400'

HOCKING COUNTY

FALLS TWP. SEC. 2 T14 R17

MARION TWP. SEC. 35

Sec. 34



Pearl Pierce
111-355
NW 1/4 of NW 1/4 pt.
28.06 Ac.

Diocese of Columbus
Catholic Cemetery
105-290
3.00 Ac.
330

Margaret & Elmer Grosshiem
162-118
29.00 Ac.
NW NE Pt.

Faith Leonard
140-32
Lot 4
67.0 Ac.

James & Ruth Rogers
181-618
Tot. 106.1737 Ac.

Lawrence & Peggy Hamilton
179-741
8.00 Ac.

NW 1/4 of NW 1/4 pt.
17.94 Ac.

Robert & Barbara Weaver
179-326
9.00 Ac.

45 Ac.
SW NW

45.0 Ac.
SW NE

25.0 Ac.
SE NE pt.

David & Dorothy Van Vooris
152-719
Total Ac. 47.0

E 1/2 NW pt.
87.8 Ac.

Clyde Goss
90-606 &
180-613
3.1 Ac.
458.04

2.0 Ac.

75 Ac.
Ronald P. & Jane K.
Hutchison
130-82

James & Ruth Ann Ucker
176-153*
Tot. Ac. 136.9705

Carl & Amy Jo Hart
181-556
45.35 Ac.
NE 1/4 of SW 1/4 pt.

571 Ac.
170-544*

Robert & Roberta
Wolfe
Tot. Ac. 2.3695

N 1/2 of SE 1/4 pt.
66.9705 Ac.

Daniel W. & Ruth E. Souders
100-630
W 1/2 of SW 1/4 pt.
86.90 Ac.

Oakey D. & Margaret
Hammon
108-167
N 1/2 of SE 1/4 pt.
11.72 Ac.

Lucille Nixon
182-891,
78-270
2.431 Ac *

Clarence & Beatrice
Nixon, To. Ac. 2.759

Jerry &
Darlene Barnett
180-669
1.5865 Ac.

Geneva Corne
170-417
Tot. Ac. .32

21 Ac.
11 Ac.

Richard H. &
Dee E. Armstrong
124-717
Lot 2 pt.
3.976 Ac.

Donald G. & Judith K.
Combs
124-754
Lot 2 pt.
39.02 Ac.

81-426
Lot 2 pt.
9.02 Ac.

Leroy & Nora Mae
Schrader
Total Ac. 40.24

Dannie &
Rhonda F.
Wine
135-128
.9836 Ac.

133-280
SE pt.
28.22 Ac.

Francis L. & Mary L.
Schrader
9025 Ac
135-99

SEC. 11

SEC. 2