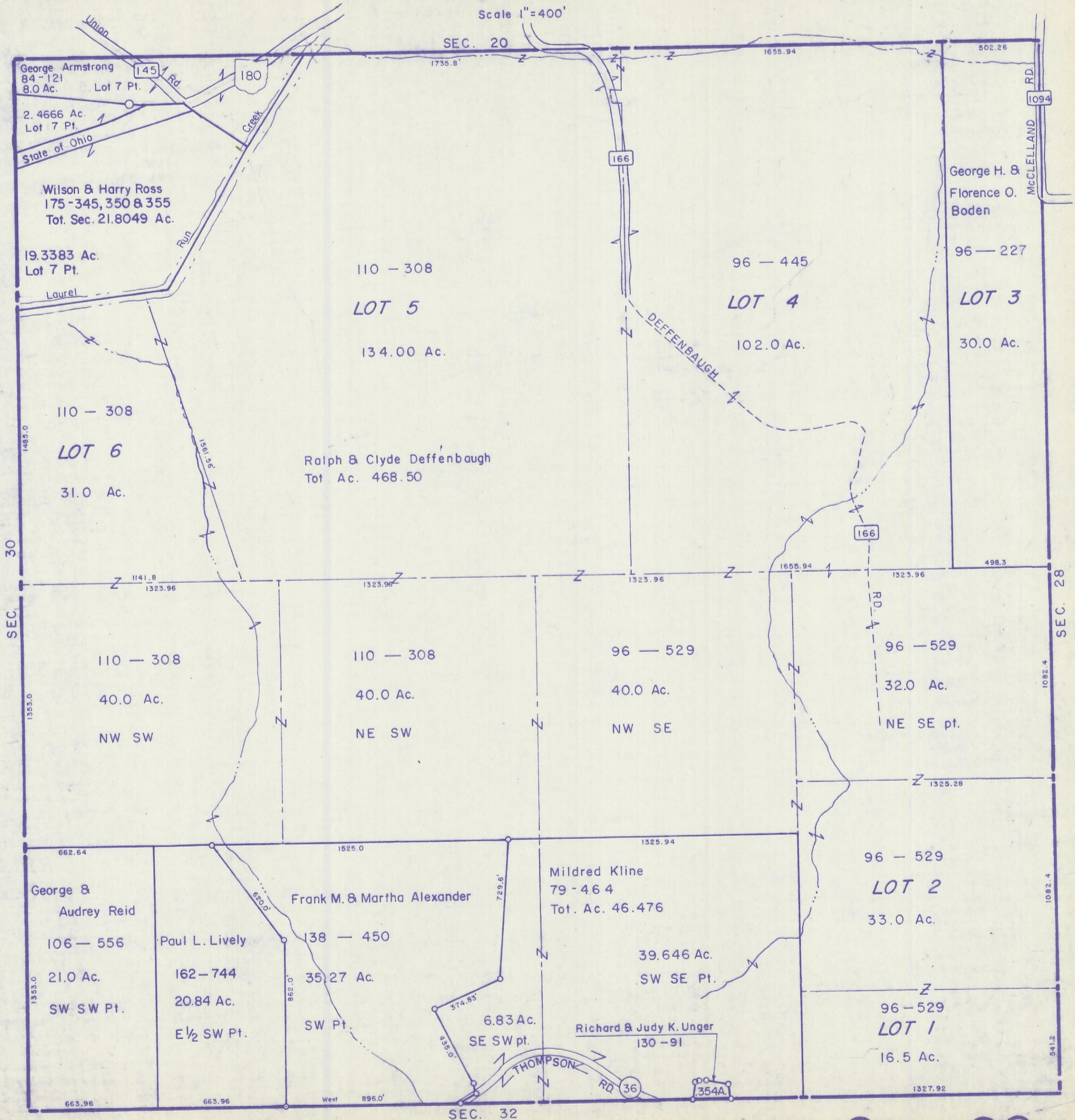


HOCKING COUNTY

Sec. 29 T 12 R 19.

PERRY TWP.

Scale 1"=400'



George Armstrong
84-121
8.0 Ac.
Lot 7 Pt.

2.4666 Ac.
Lot 7 Pt.

State of Ohio

Wilson & Harry Ross
175-345, 350 & 355
Tot. Sec. 21.8049 Ac.

19.3383 Ac.
Lot 7 Pt.

Laurel

110 - 308

LOT 5

134.00 Ac.

96 - 445

LOT 4

102.0 Ac.

George H. &
Florence O.
Boden

96 - 227

LOT 3

30.0 Ac.

110 - 308

LOT 6

31.0 Ac.

Ralph & Clyde Deffenbaugh
Tot. Ac. 468.50

110 - 308

40.0 Ac.

NW SW

110 - 308

40.0 Ac.

NE SW

96 - 529

40.0 Ac.

NW SE

96 - 529

32.0 Ac.

NE SE pt.

George &
Audrey Reid

106 - 556

21.0 Ac.

SW SW Pt.

Paul L. Lively

162 - 744

20.84 Ac.

E 1/2 SW Pt.

Frank M. & Martha Alexander

138 - 450

35.27 Ac.

SW Pt.

Mildred Kline
79 - 464

Tot. Ac. 46.476

39.646 Ac.

SW SE Pt.

Richard & Judy K. Unger
130 - 91

6.83 Ac.
SE SW pt.

96 - 529

LOT 2

33.0 Ac.

96 - 529

LOT 1

16.5 Ac.

Sec. 29