

HOCKING COUNTY

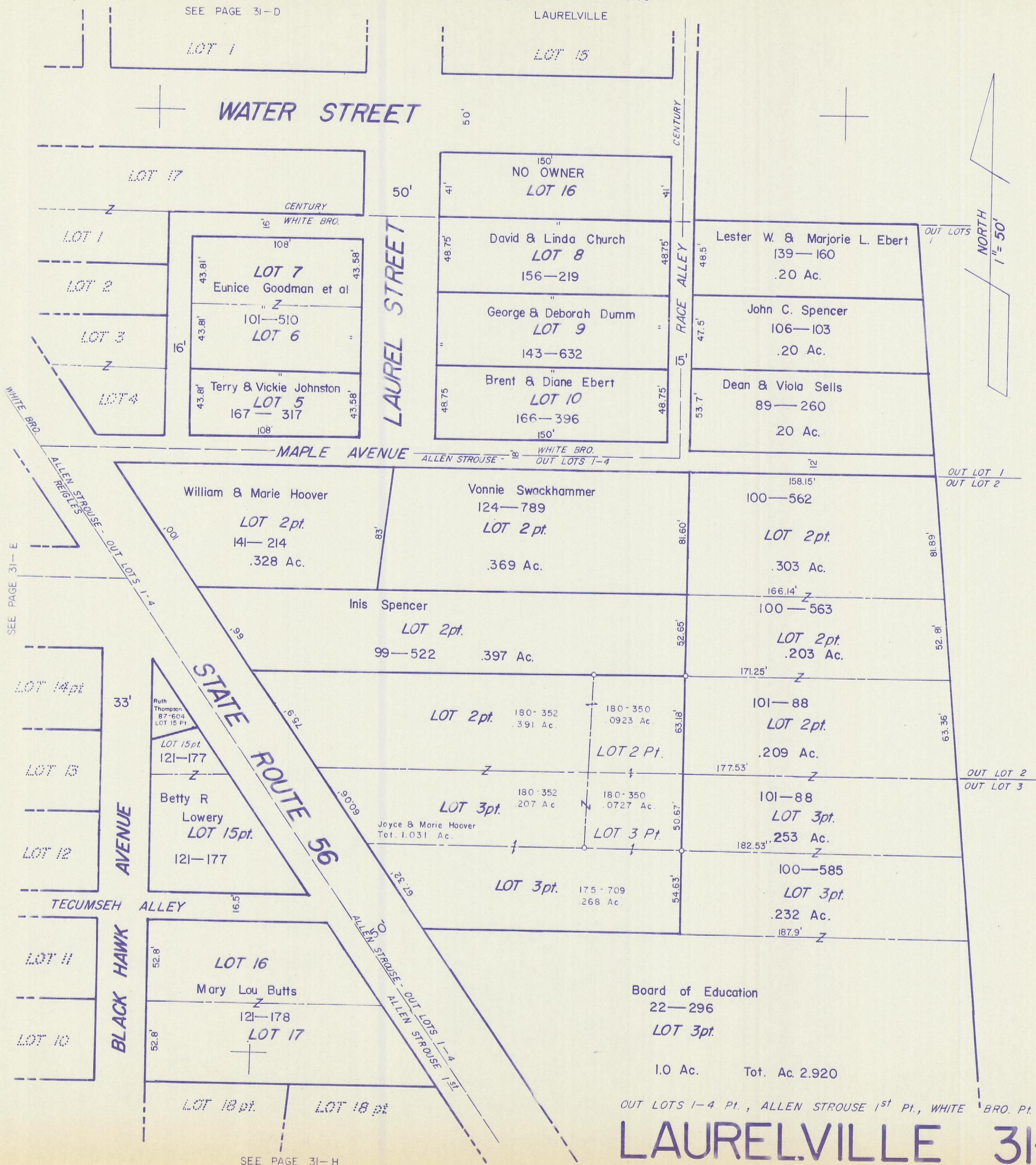
PERRY TWP.

SEC. 31 T 12 R 19

LAURELVILLE

31-F

SEE PAGE 31-D



SEE PAGE 31-E

SEE PAGE 31-H

Board of Education  
 22—296  
 LOT 3pt.  
 1.0 Ac. Tot. Ac. 2.920

OUT LOTS 1-4 Pt., ALLEN STROUSE 1<sup>st</sup> Pt., WHITE BRO. Pt., & CENTURY Pt.

LAURELVILLE 31-F