

HOCKING COUNTY

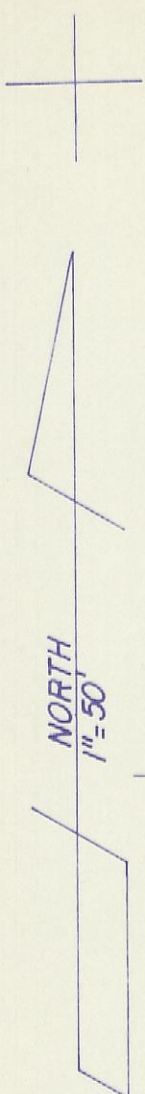
PERRY TWP.

SEC. 31 T 12 R 19

LAURELVILLE

31-J

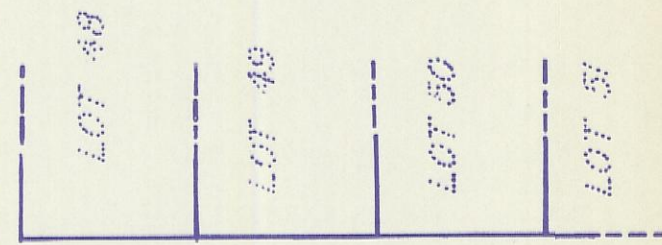
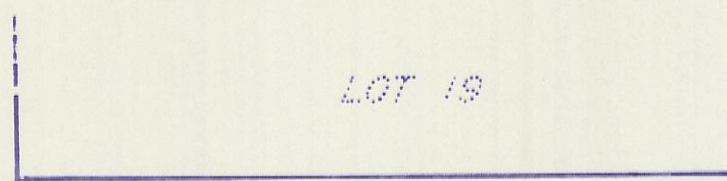
SEE PAGE 31-G



PICKWAY COUNTY
HOCKING COUNTY
SALT CREEK TOWNSHIP
PERRY TOWNSHIP
SECTION 36
SECTION 31
CORP LINE

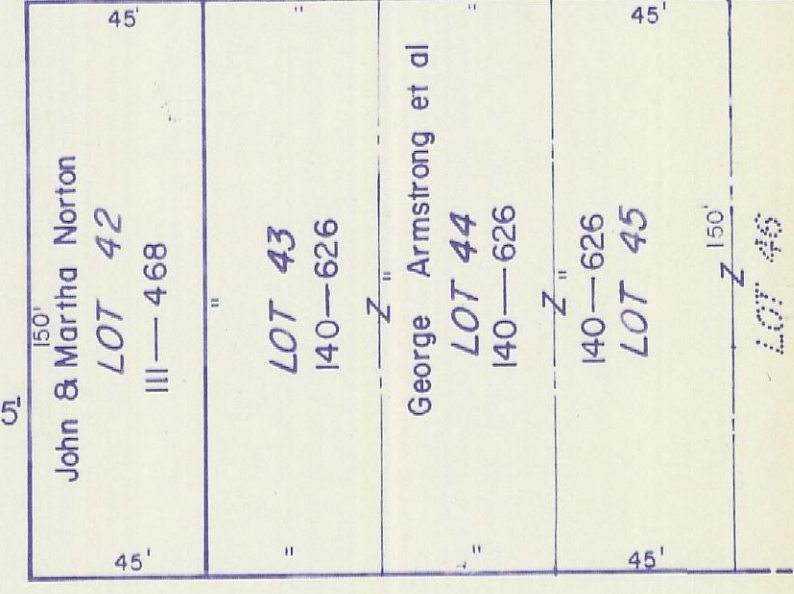
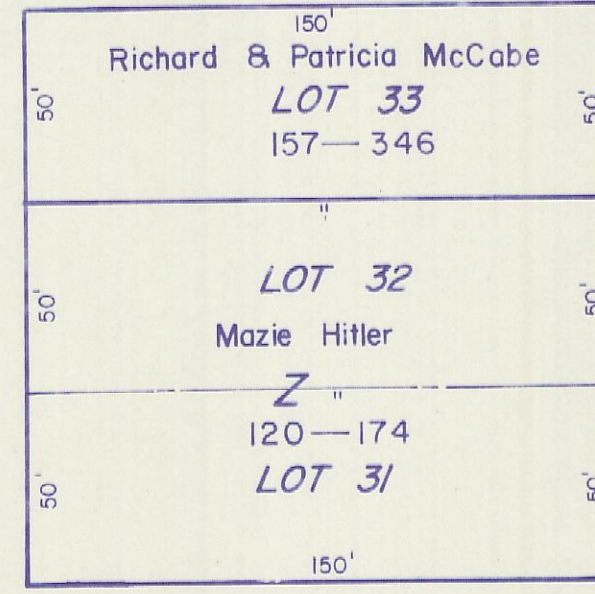
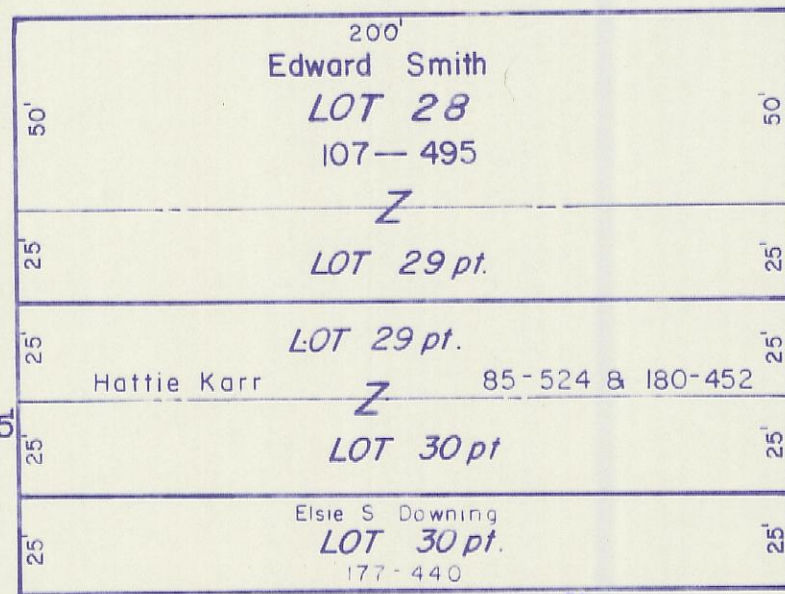
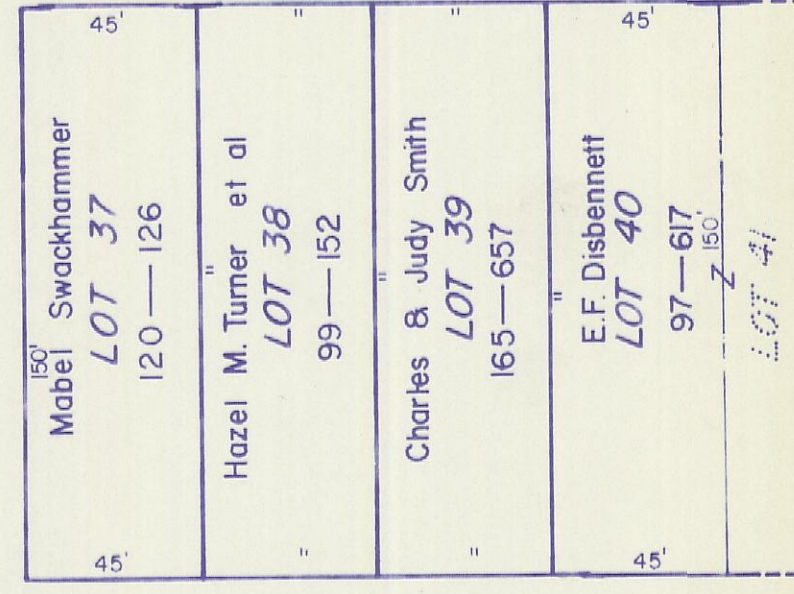
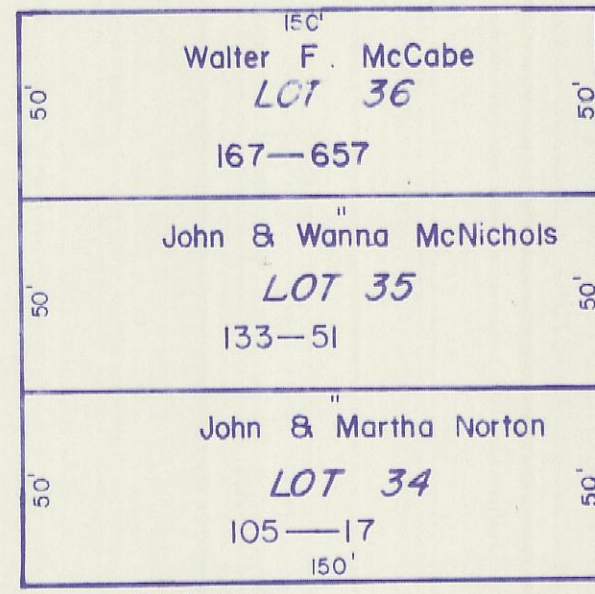
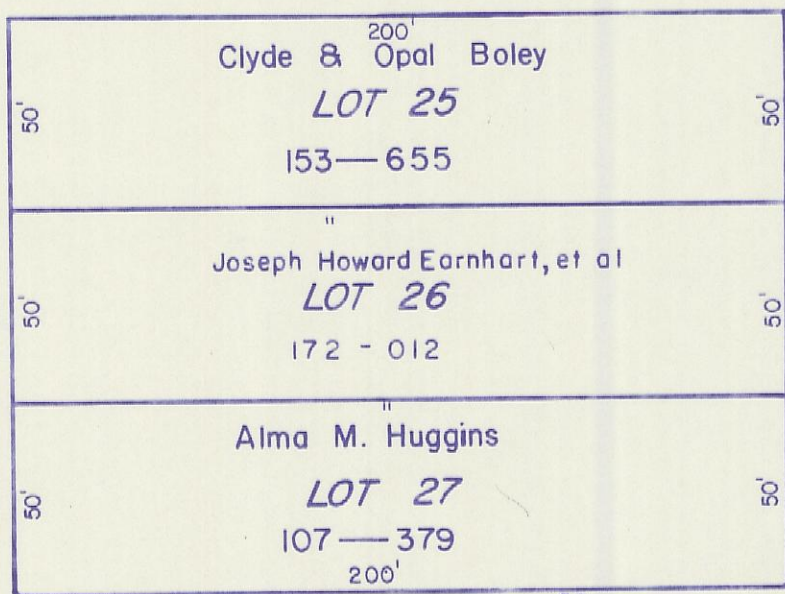


MOWERY 2nd
MOWERY 3rd



MOWERY Add.
MOWERY 3rd

SHERMAN STREET 50'



66' MAIN STREET

ALLEY

CLEVELAND STREET 50'

MOWERY 3rd Pt

LAURELVILLE 31-J

SEE PAGE 31-K