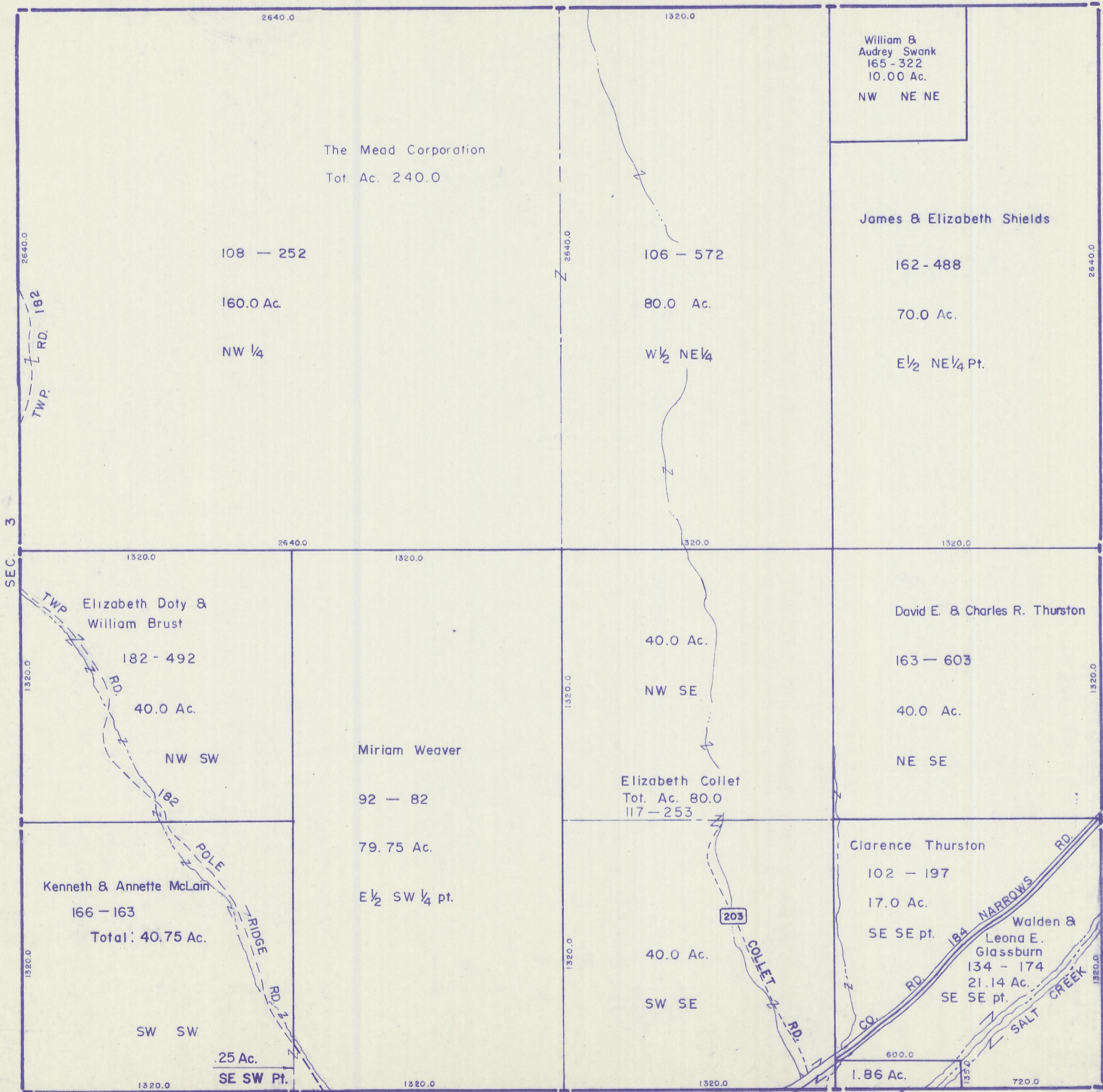


HOCKING COUNTY

Sec. 2 T10 R19
SALT CREEK TWP.

Scale 1"=400'

SEC. 35



William &
Audrey Swank
165 - 322
10.00 Ac.
NW NE NE

The Mead Corporation
Tot. Ac. 240.0

James & Elizabeth Shields

108 - 252
160.0 Ac.
NW 1/4

106 - 572
80.0 Ac.
W 1/2 NE 1/4

162 - 488
70.0 Ac.
E 1/2 NE 1/4 Pt.

Elizabeth Doty &
William Brust
182 - 492
40.0 Ac.
NW SW

40.0 Ac.
NW SE

David E. & Charles R. Thurston
163 - 603
40.0 Ac.
NE SE

Miriam Weaver
92 - 82
79.75 Ac.
E 1/2 SW 1/4 pt.

Elizabeth Collet
Tot. Ac. 80.0
117 - 253

Kenneth & Annette McLain
166 - 163
Total: 40.75 Ac.

Clarence Thurston
102 - 197
17.0 Ac.
SE SE pt.
Walden &
Leona E.
Glassburn
134 - 174
21.14 Ac.
SE SE pt.

.25 Ac.
SE SW Pt.

40.0 Ac.
SW SE

1.86 Ac.

SEC. 11 Eagle Twp.

Vinton Co.

Charles & Jane Vollmer, et al
182 - 199

SEC. 2
BOTTOM TIER