

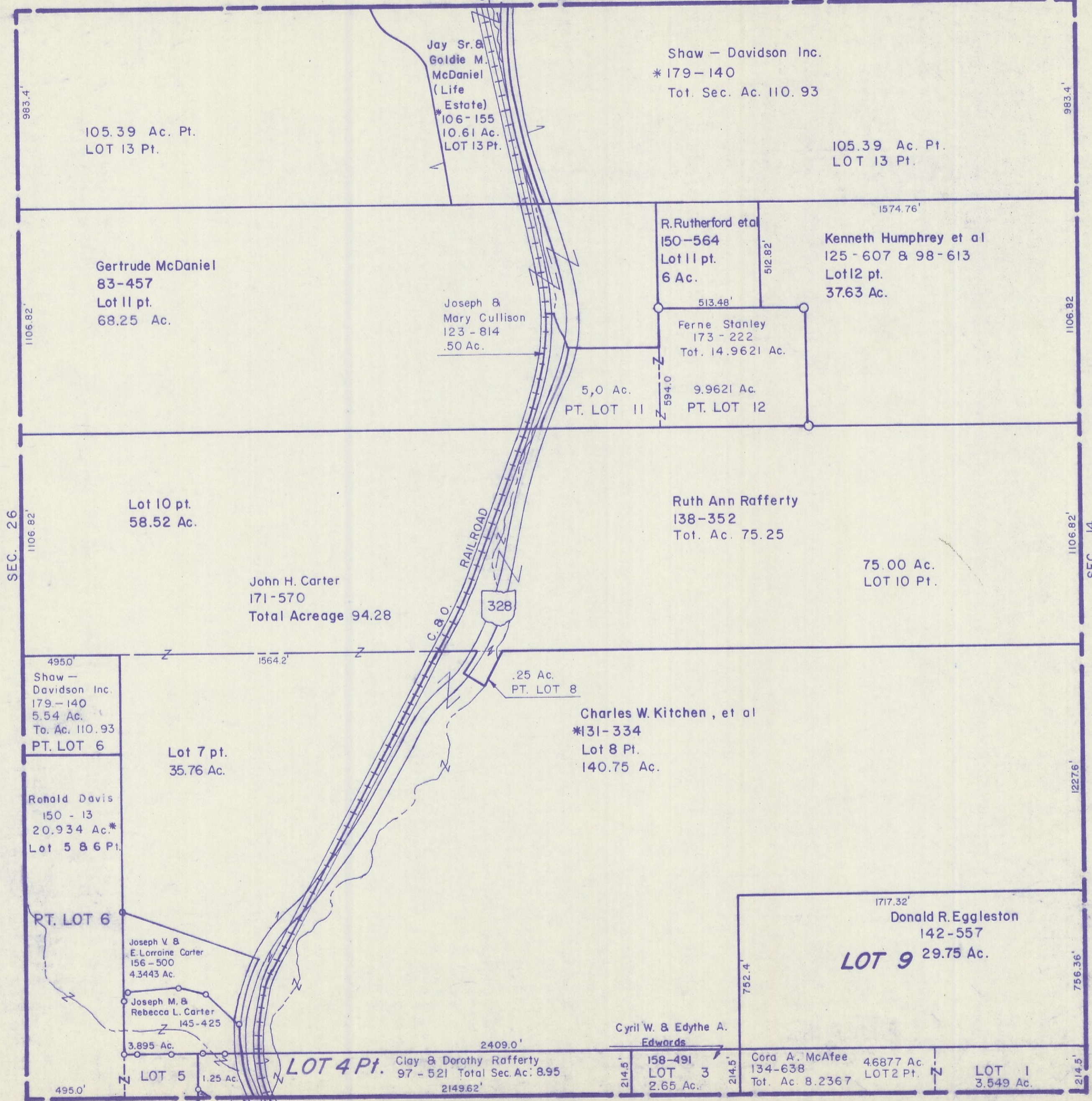
HOCKING COUNTY

STARR TWP.

SEC. 20 T-12 R-16

SCALE 1"=400'

SEC. 21



105.39 Ac. Pt.
LOT 13 Pt.

Jay Sr. &
Goldie M.
McDaniel
(Life
*Estate)
*106-155
10.61 Ac.
LOT 13 Pt.

Shaw - Davidson Inc.
*179-140
Tot. Sec. Ac. 110.93

105.39 Ac. Pt.
LOT 13 Pt.

Gertrude McDaniel
83-457
Lot 11 pt.
68.25 Ac.

Joseph &
Mary Cullison
123-814
.50 Ac.

R. Rutherford et al
150-564
Lot 11 pt.
6 Ac.

Kenneth Humphrey et al
125-607 & 98-613
Lot 12 pt.
37.63 Ac.

Ferne Stanley
173-222
Tot. 14.9621 Ac.

5.0 Ac.
PT. LOT 11

9.9621 Ac.
PT. LOT 12

Lot 10 pt.
58.52 Ac.

Ruth Ann Rafferty
138-352
Tot. Ac. 75.25

75.00 Ac.
LOT 10 Pt.

John H. Carter
171-570
Total Acreage 94.28

.25 Ac.
PT. LOT 8

Charles W. Kitchen, et al
*131-334
Lot 8 Pt.
140.75 Ac.

Shaw -
Davidson Inc.
179-140
5.54 Ac.
To. Ac. 110.93
PT. LOT 6

Lot 7 pt.
35.76 Ac.

Ronald Davis
150-13
20.934 Ac.*
Lot 5 & 6 Pt.

PT. LOT 6

Joseph V &
E. Lorraine Carter
156-500
4.3443 Ac.

Joseph M. &
Rebecca L. Carter
145-425
3.895 Ac.

LOT 5
1.25 Ac.

LOT 4 Pt. Clay & Dorothy Rafferty
97-521 Total Sec. Ac: 8.95
2149.62'

Cyril W. & Edythe A.
Edwards

158-491
LOT 3
2.65 Ac.

Cora A. McAfee
134-638
Tot. Ac. 8.2367

46877 Ac.
LOT 2 Pt.

LOT 1
3.549 Ac.

Clay & Dorothy
Rafferty
97-521
Total Sec. Ac. 8.95

Elden & Della Dexter
171-717

SEC. 19

SEC. 20