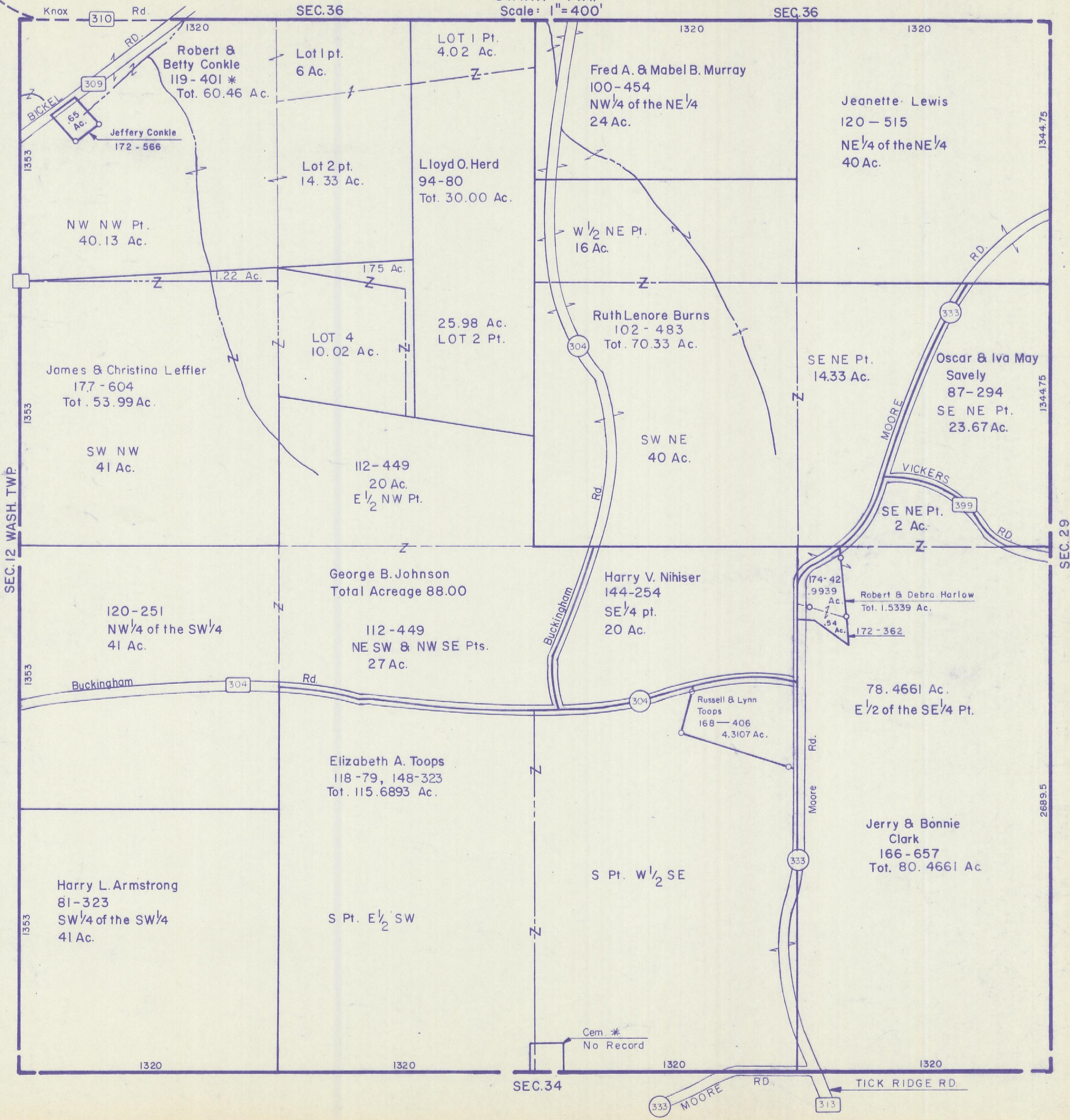


HOCKING COUNTY

Sec. 35 T 12 R 16

STARR TWP

Scale: 1" = 400'



SEC. 12 WASH. TWP.

SEC. 29

SEC. 34

SEC. 35

Knox Rd. 310

SEC. 36

SEC. 36

1353

1353

1353

1353

1320

1320

1344.75

1344.75

2689.5

1320

1320

1320

1320

MOORE RD.

TICK RIDGE RD.

Robert & Betty Conkle
119-401 *
Tot. 60.46 Ac.

Lot 1 pt.
6 Ac.

LOT 1 Pt.
4.02 Ac.

Fred A. & Mabel B. Murray
100-454
NW 1/4 of the NE 1/4
24 Ac.

Jeanette Lewis
120-515
NE 1/4 of the NE 1/4
40 Ac.

NW NW Pt.
40.13 Ac.

Lot 2 pt.
14.33 Ac.

Lloyd O. Herd
94-80
Tot. 30.00 Ac.

W 1/2 NE Pt.
16 Ac.

James & Christina Leffler
177-604
Tot. 53.99 Ac.

LOT 4
10.02 Ac.

25.98 Ac.
LOT 2 Pt.

Ruth Lenore Burns
102-483
Tot. 70.33 Ac.

SE NE Pt.
14.33 Ac.

Oscar & Iva May
Savely
87-294
SE NE Pt.
23.67 Ac.

SW NW
41 Ac.

112-449
20 Ac.
E 1/2 NW Pt.

SW NE
40 Ac.

120-251
NW 1/4 of the SW 1/4
41 Ac.

George B. Johnson
Total Acreage 88.00

112-449
NE SW & NW SE Pts.
27 Ac.

Harry V. Nihiser
144-254
SE 1/4 pt.
20 Ac.

Robert & Debra Harlow
Tot. 1.5339 Ac.

Buckingham Rd. 304

Rd.

Buckingham Rd.

Russell & Lynn
Toops
168-406
4.3107 Ac.

78.4661 Ac.
E 1/2 of the SE 1/4 Pt.

Elizabeth A. Toops
118-79, 148-323
Tot. 115.6893 Ac.

S Pt. W 1/2 SE

Jerry & Bonnie
Clark
166-657
Tot. 80.4661 Ac.

Harry L. Armstrong
81-323
SW 1/4 of the SW 1/4
41 Ac.

S Pt. E 1/2 SW

Cem. *
No Record

MOORE RD. 333

RD. 313