

HOCKING COUNTY

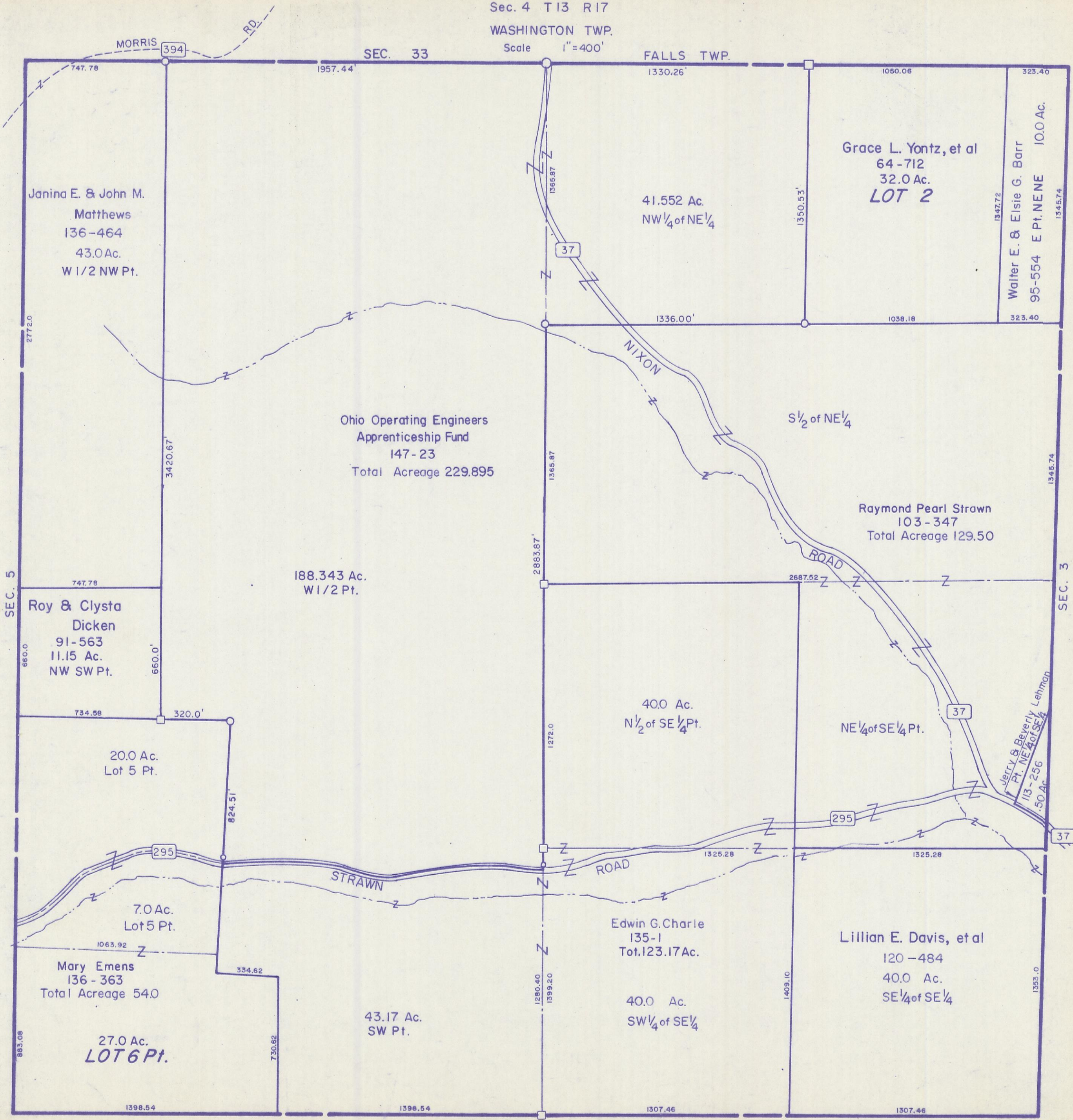
Sec. 4 T13 R17

WASHINGTON TWP.

Scale 1" = 400'

SEC. 33

FALLS TWP.



Janina E. & John M.  
Matthews  
136-464  
43.0 Ac.  
W 1/2 NW Pt.

41.552 Ac.  
NW 1/4 of NE 1/4

Grace L. Yontz, et al  
64-712  
32.0 Ac.  
**LOT 2**

Walter E. & Elsie G. Barr  
95-554 E Pt. NENE  
10.0 Ac.

Ohio Operating Engineers  
Apprenticeship Fund  
147-23  
Total Acreage 229.895

S 1/2 of NE 1/4

Raymond Pearl Strawn  
103-347  
Total Acreage 129.50

188.343 Ac.  
W 1/2 Pt.

Roy & Clysta  
Dicken  
91-563  
11.15 Ac.  
NW SW Pt.

40.0 Ac.  
N 1/2 of SE 1/4 Pt.

NE 1/4 of SE 1/4 Pt.

20.0 Ac.  
Lot 5 Pt.

Jerry & Beverly Lehman  
Pt. NE 1/4 of SE 1/4  
113-256  
.50 Ac.

7.0 Ac.  
Lot 5 Pt.

Edwin G. Charle  
135-1  
Tot. 123.17 Ac.

Lillian E. Davis, et al  
120-484  
40.0 Ac.  
SE 1/4 of SE 1/4

Mary Emens  
136-363  
Total Acreage 54.0

43.17 Ac.  
SW Pt.

40.0 Ac.  
SW 1/4 of SE 1/4

27.0 Ac.  
**LOT 6 Pt.**

**SEC. 4**