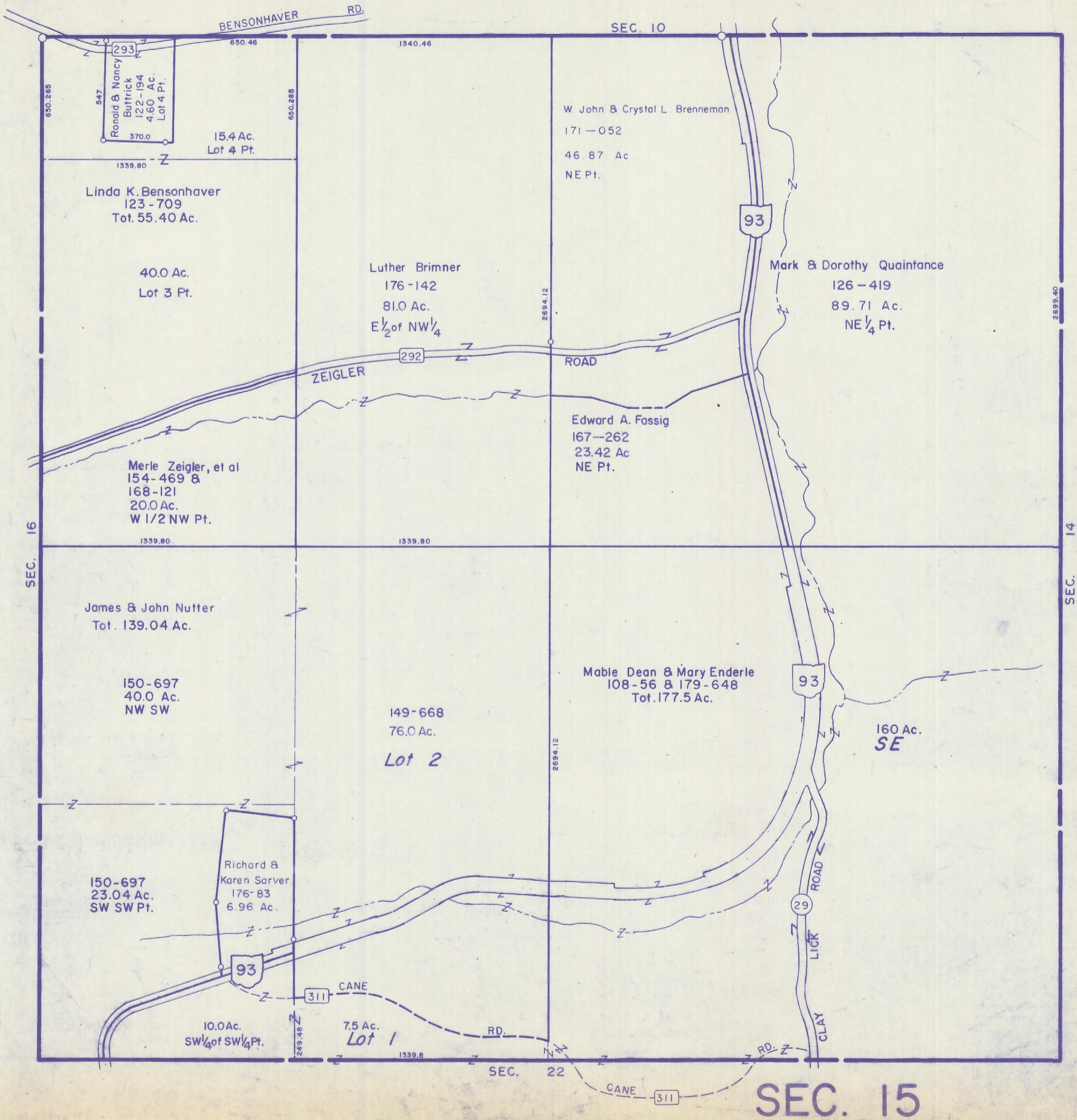


HOCKING COUNTY

Sec. 15 T13 R17

WASHINGTON TWP.

Scale 1" = 400'



Ronald & Nancy
Buttrick
122-194
4.60 Ac.
Lot 4 Pt.
370.0

15.4 Ac.
Lot 4 Pt.

Linda K. Bensonhaver
123-709
Tot. 55.40 Ac.

40.0 Ac.
Lot 3 Pt.

Luther Brimner
176-142
81.0 Ac.
E 1/2 of NW 1/4

W. John & Crystal L. Brenneman
171-052
46.87 Ac.
NE Pt.

Mark & Dorothy Quaintance
126-419
89.71 Ac.
NE 1/4 Pt.

Merle Zeigler, et al
154-469 &
168-121
20.0 Ac.
W 1/2 NW Pt.

Edward A. Fassig
167-262
23.42 Ac.
NE Pt.

James & John Nutter
Tot. 139.04 Ac.

150-697
40.0 Ac.
NW SW

149-668
76.0 Ac.
Lot 2

Mable Dean & Mary Enderle
108-56 & 179-648
Tot. 177.5 Ac.

160 Ac.
SE

150-697
23.04 Ac.
SW SW Pt.

Richard &
Karen Sarver
176-83
6.96 Ac.

10.0 Ac.
SW 1/4 of SW 1/4 Pt.

7.5 Ac.
Lot 1

SEC. 15