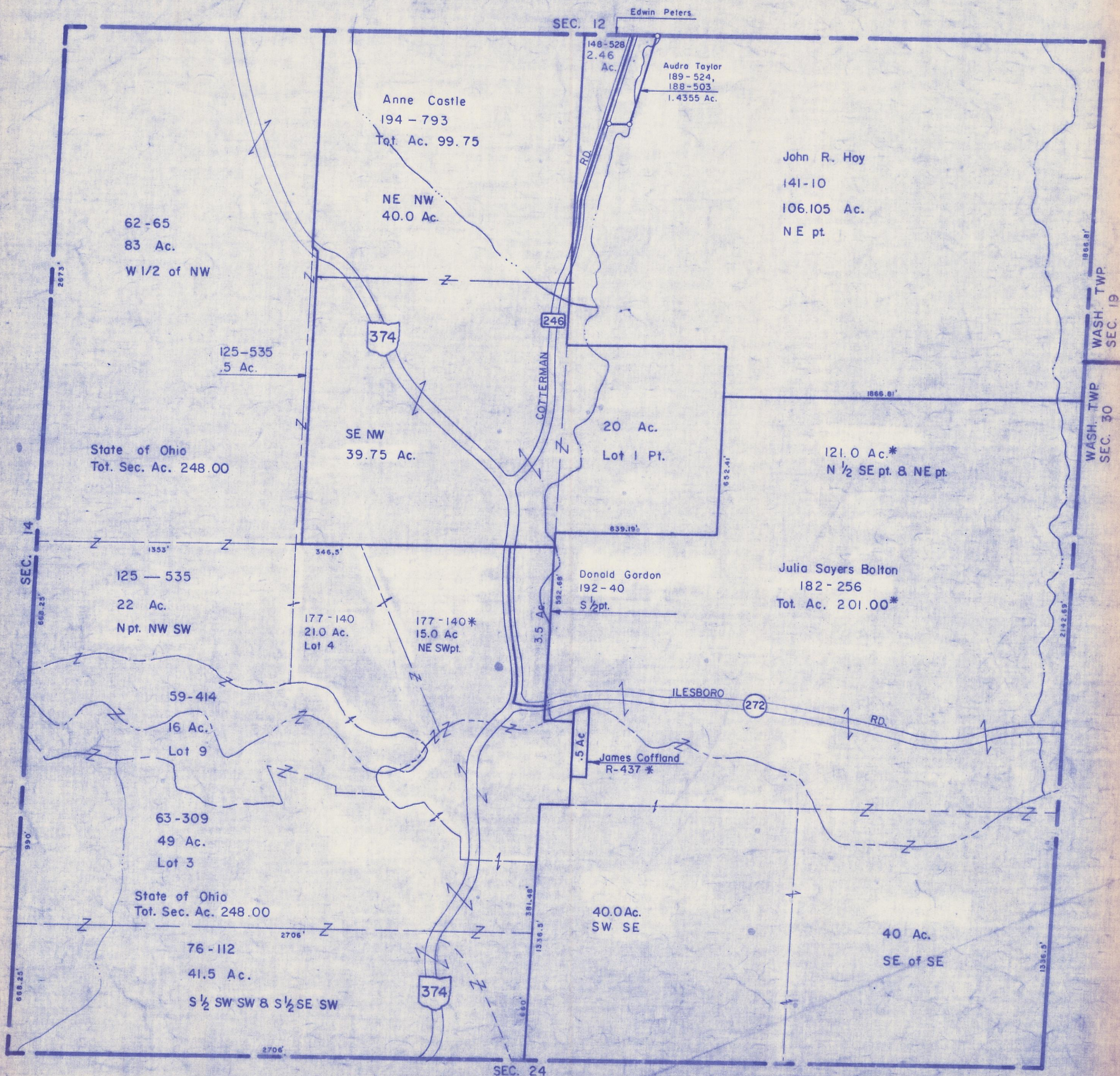


HOCKING COUNTY

Sec. 13 T11 R18

BENTON TWP

Scale: 1"=400'



SEC. 12

Edwin Peters

148-528
2.46
Ac.

Audra Taylor
189-524,
188-503
1.4355 Ac.

Anne Castle
194-793
Tot. Ac. 99.75

NE NW
40.0 Ac.

John R. Hoy
141-10
106.105 Ac.
NE pt.

62-65
83 Ac.
W 1/2 of NW

125-535
.5 Ac.

374

246

COTTERMAN
RD.

SE NW
39.75 Ac.

20 Ac.
Lot 1 Pt.

121.0 Ac.*
N 1/2 SE pt. & NE pt.

State of Ohio
Tot. Sec. Ac. 248.00

SEC. 14

125-535
22 Ac.
N pt. NW SW

177-140
21.0 Ac.
Lot 4

177-140*
15.0 Ac
NE SWpt.

Donald Gordon
192-40
S 1/2 pt.

Julia Sayers Bolton
182-256
Tot. Ac. 201.00*

59-414
16 Ac.
Lot 9

63-309
49 Ac.
Lot 3

State of Ohio
Tot. Sec. Ac. 248.00

James Coffland
R-437*

40.0 Ac.
SW SE

40 Ac.
SE of SE

76-112
41.5 Ac.
S 1/2 SW SW & S 1/2 SE SW

374

SEC. 24

WASH. TWP
SEC. 19

WASH. TWP
SEC. 30

SEC. 13