

HOCKING COUNTY  
FALLS GORE

SEC. 25 T 14 R 16

Scale 1" = 50'

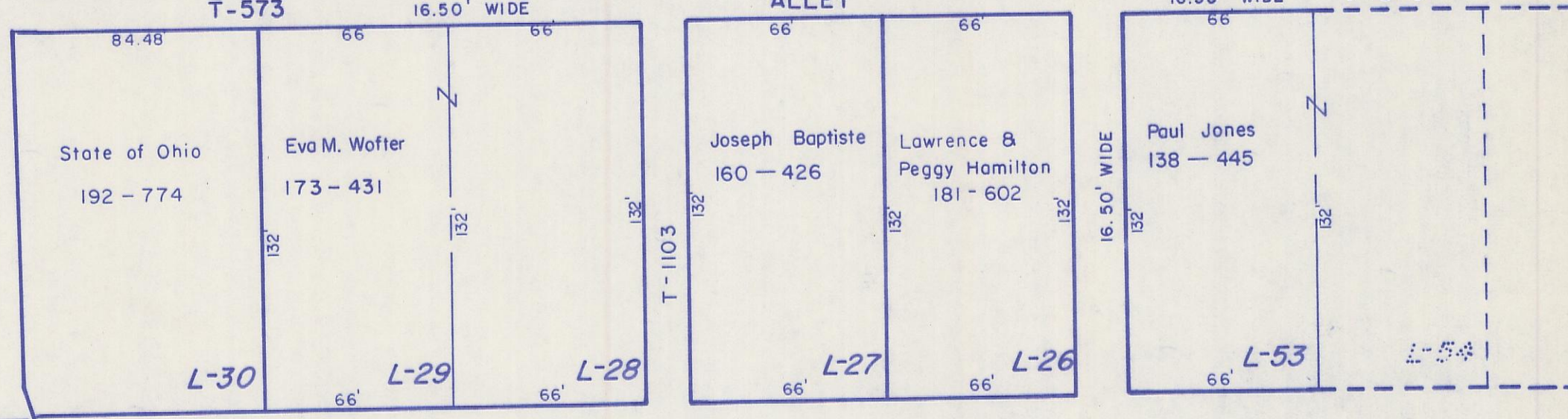
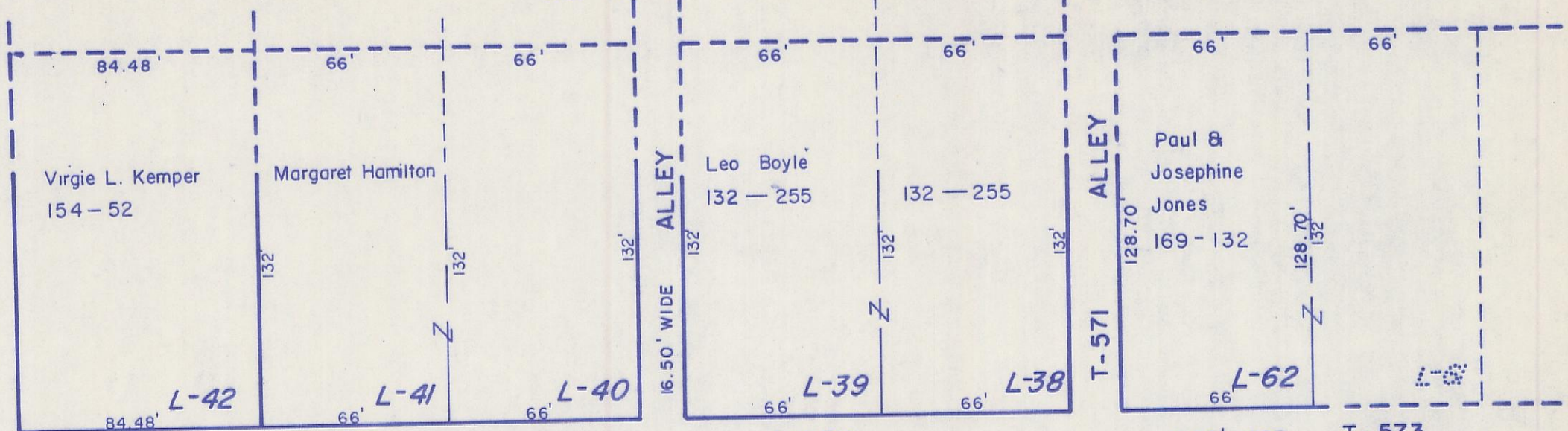
SEE 25 - A

25-B

Helen Wheeler  
132 - 753  
1.0 Ac.

N

T-1102

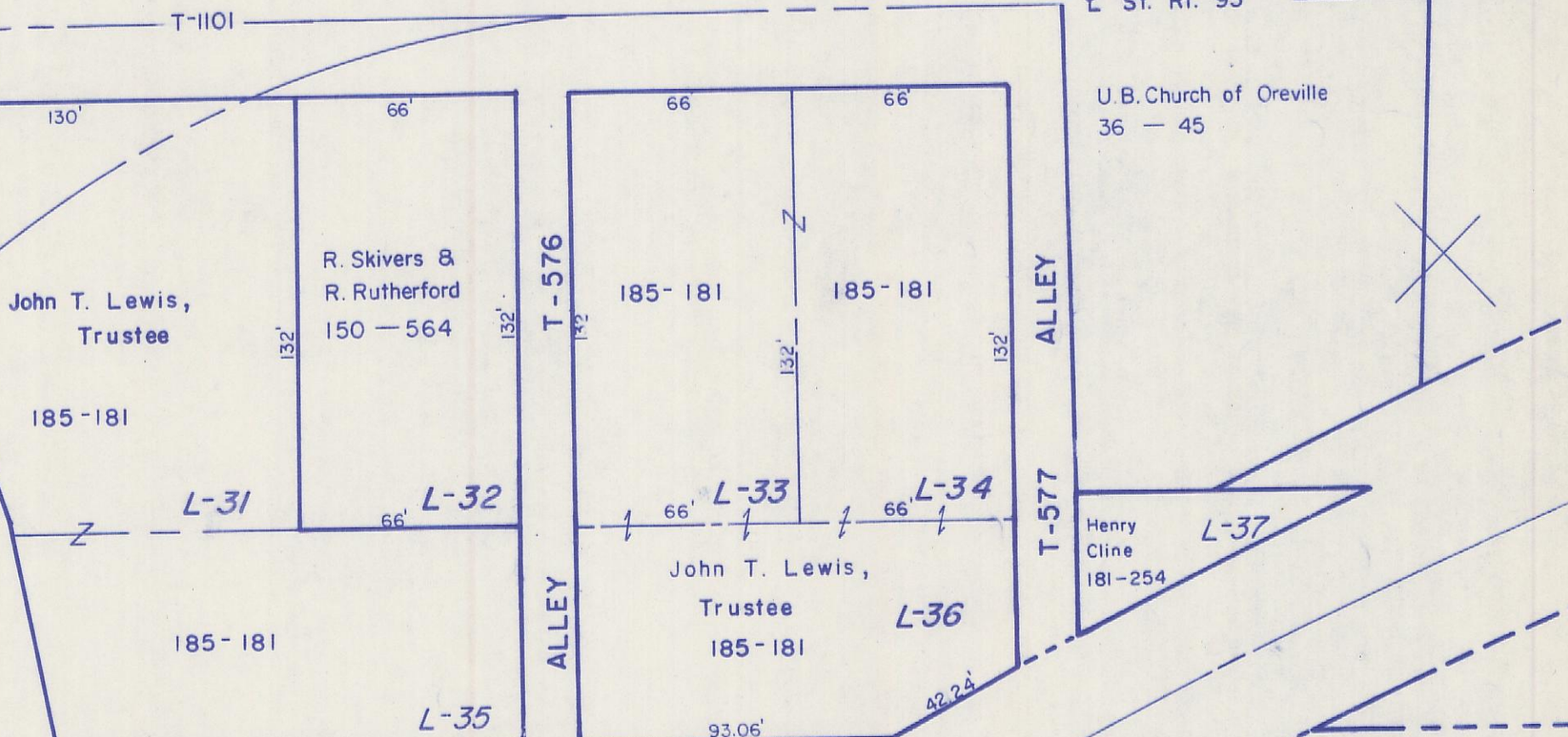


Wheeler Rd.

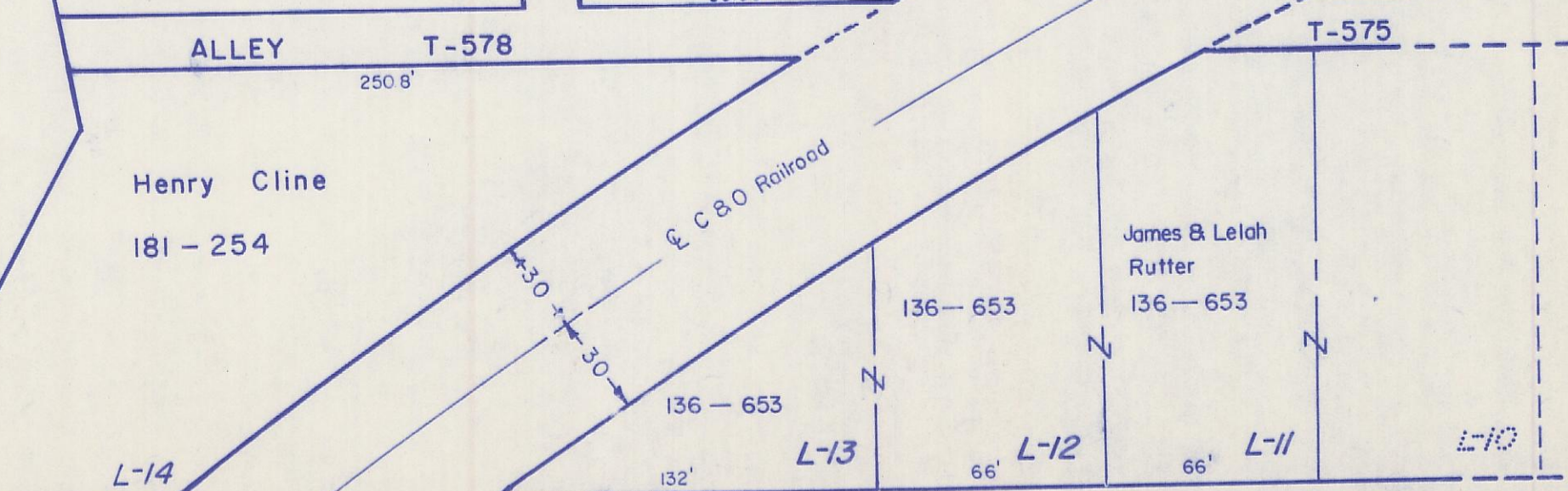
T-1101

T-1105

St. Rt. 93



Boyle Coal Co.  
133 - 665  
1.75 Ac.  
LOT 3 Pt.



ORVILLE 25-B

& abutting properties

SEE 25 - C

SEE 25 - D