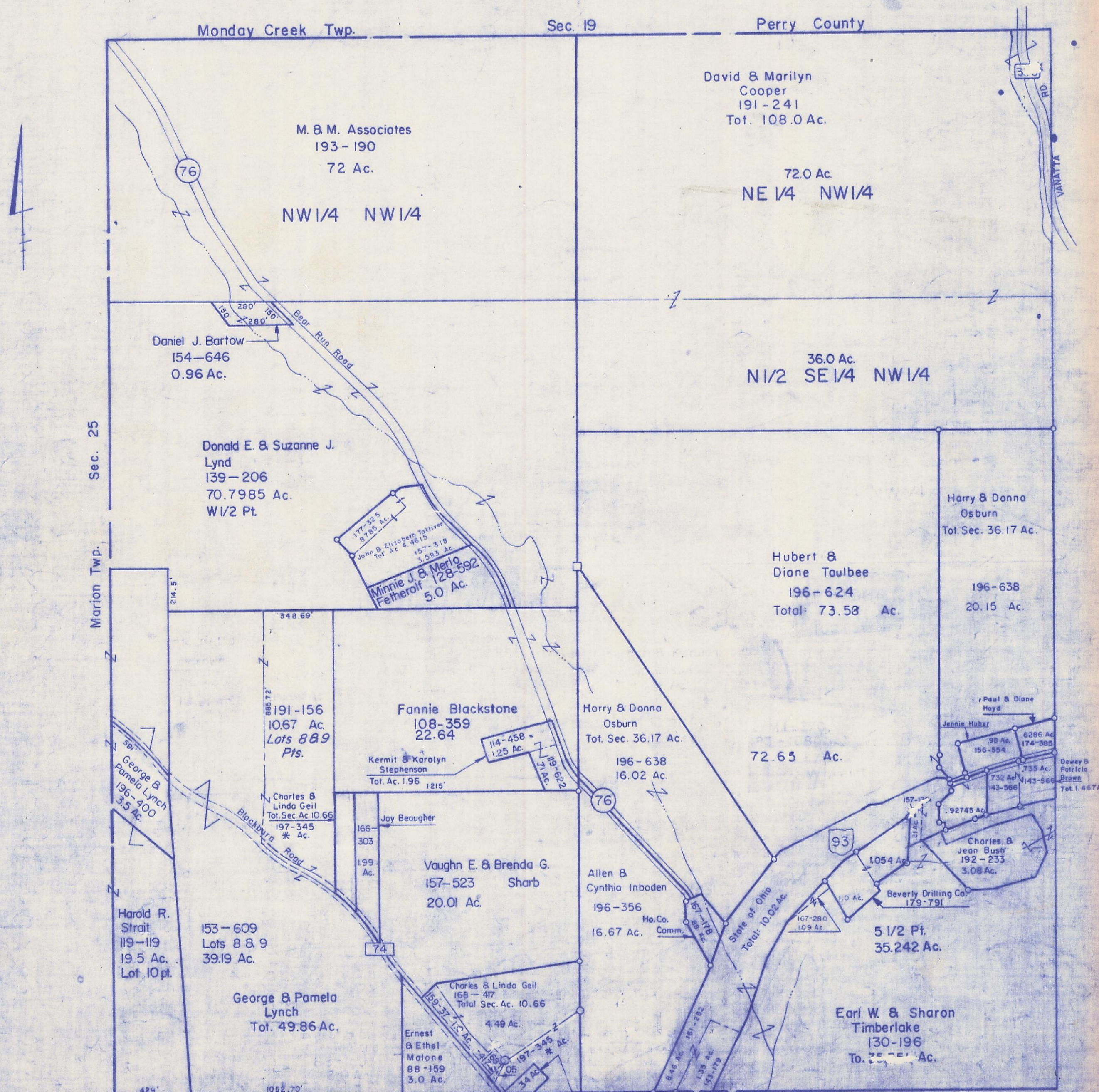


HOCKING COUNTY

Sec. 30

FALLS GORE TWP.

Scale 1" = 400'



Monday Creek Twp.

Sec. 19

Perry County

M. & M. Associates
193-190
72 Ac.

David & Marilyn
Cooper
191-241
Tot. 108.0 Ac.

72.0 Ac.
NE 1/4 NW 1/4

Daniel J. Bartow
154-646
0.96 Ac.

36.0 Ac.
N 1/2 SE 1/4 NW 1/4

Donald E. & Suzanne J.
Lynd
139-206
70.7985 Ac.
W 1/2 Pt.

177-325
9785 Ac.
John & Elizabeth Tolliver
Tot. Ac. 4.4615
157-318
3.583 Ac.
Minnie J. & Merlo
Fetherolf
128-592
5.0 Ac.

Hubert &
Diane Taulbee
196-624
Total: 73.58 Ac.

Harry & Donna
Osburn
Tot. Sec. 36.17 Ac.

196-638
20.15 Ac.

Fannie Blackstone
108-359
22.64
Lots 8 & 9
Pts.

Harry & Donna
Osburn
Tot. Sec. 36.17 Ac.

72.65 Ac.

Kermit & Karolyn
Stephenson
Tot. Ac. 1.96

196-638
16.02 Ac.

r Paul & Diane
Hoyd
Jennie Huber
98 Ac.
156-554
6286 Ac.
174-385
735 Ac.

George & Pamela
Lynch
196-400
3.5 Ac.

Charles & Linda Geil
Tot. Sec. Ac. 10.66
197-345
* Ac.

Joy Beougher
166
303
199
Ac.

Vaughn E. & Brenda G.
157-523
20.01 Ac. Sharp

Allen &
Cynthia Inboden
196-356
16.67 Ac. Ho. Co. Comm.

State of Ohio
Total: 10.02 Ac.

Charles & Jean Bush
192-233
3.08 Ac.

Harold R. Strait
119-119
19.5 Ac.
Lot 10 pt.

153-609
Lots 8 & 9
39.19 Ac.

George & Pamela
Lynch
Tot. 49.86 Ac.

Charles & Linda Geil
168-417
Total Sec. Ac. 10.66
4.49 Ac.

Ernest & Ethel
Malone
88-159
3.0 Ac.

Harold & Betty
Geil
115-344

5 1/2 Pt.
35.242 Ac.

Earl W. & Sharon
Timberlake
130-196
To. 25.75 Ac.

Sec. 25

Marion Twp.

Sec. 31

SEC 30 Pt.