

HOCKING COUNTY

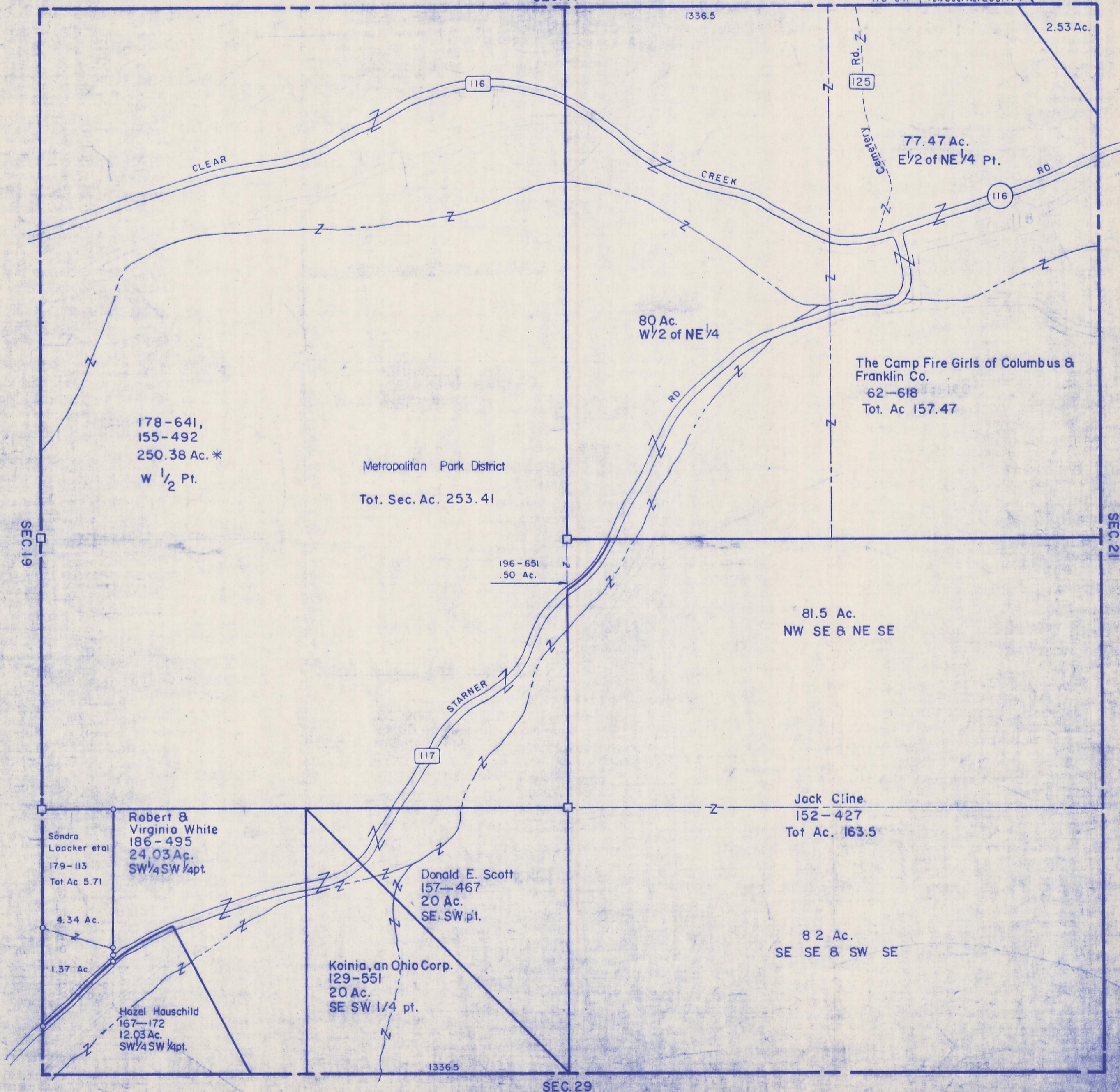
SEC. 20 T13 R18

GOOD HOPE TWP.

Scale: 1" = 400'

SEC. 17

Metropolitan Park District 155-492
178-641, Tot. Sec. Ac. 253.41 *



178-641,
155-492
250.38 Ac. *
W 1/2 Pt.

Metropolitan Park District
Tot. Sec. Ac. 253.41

80 Ac.
W 1/2 of NE 1/4

The Camp Fire Girls of Columbus &
Franklin Co.
62-618
Tot. Ac. 157.47

196-651
.50 Ac.

81.5 Ac.
NW SE & NE SE

Sandra
Loacker et al
179-113
Tot. Ac. 5.71

Robert &
Virginia White
186-495
24.03 Ac.
SW 1/4 SW 1/4 pt.

Donald E. Scott
157-467
20 Ac.
SE SW pt.

Jack Cline
152-427
Tot. Ac. 163.5

4.34 Ac.

1.37 Ac.

Hazel Hauschild
167-172
12.03 Ac.
SW 1/4 SW 1/4 pt.

Koinia, an Ohio Corp.
129-551
20 Ac.
SE SW 1/4 pt.

82 Ac.
SE SE & SW SE

1336.5

SEC. 29

SEC. 20