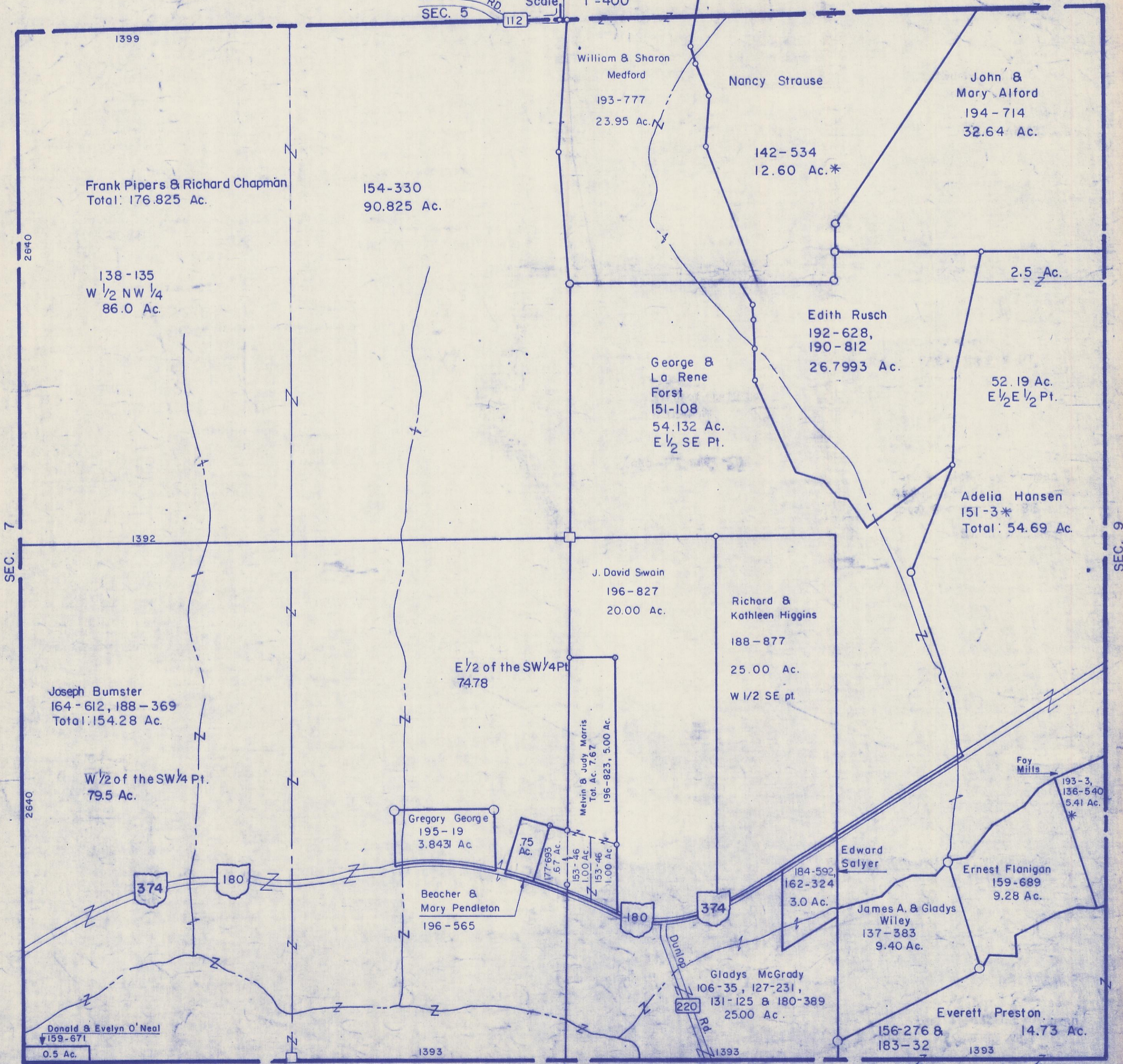


HOCKING COUNTY

Sec. 8 T12 R18

LAUREL TWP.

BIGHAM RD. Scale 1"=400'



2640

SEC. 7

1399

Frank Pipers & Richard Chapman  
Total: 176.825 Ac.

154-330  
90.825 Ac.

William & Sharon  
Medford  
193-777  
23.95 Ac.

Nancy Strause

John & Mary Alford  
194-714  
32.64 Ac.

142-534  
12.60 Ac.\*

138-135  
W 1/2 NW 1/4  
86.0 Ac.

2.5 Ac.

Edith Rusch  
192-628,  
190-812  
26.7993 Ac.

George & La Rene  
Forst  
151-108  
54.132 Ac.  
E 1/2 SE Pt.

52.19 Ac.  
E 1/2 E 1/2 Pt.

Adelia Hansen  
151-3\*  
Total: 54.69 Ac.

1392

J. David Swain  
196-827  
20.00 Ac.

Richard & Kathleen Higgins  
188-877

Joseph Bumster  
164-612, 188-369  
Total: 154.28 Ac.

E 1/2 of the SW 1/4 Pt.  
74.78

25.00 Ac.  
W 1/2 SE pt.

W 1/2 of the SW 1/4 Pt.  
79.5 Ac.

Melvin & Judy Morris  
Tot. Ac. 7.67  
196-823, 5.00 Ac.

Gregory George  
195-19  
3.8431 Ac.

.75 Ac.

Becher & Mary Pendleton  
196-565

Edward Salyer

184-592,  
162-324  
3.0 Ac.

Ernest Flanigan  
159-689  
9.28 Ac.

James A. & Gladys Wiley  
137-383  
9.40 Ac.

Foy Mills  
193-3,  
136-540  
5.41 Ac.  
\*

Donald & Evelyn O'Neal  
159-671  
0.5 Ac.

Gladys McGrady  
106-35, 127-231,  
131-125 & 180-389  
25.00 Ac.

156-276 &  
183-32

Everett Preston  
14.73 Ac.

1393

1393

SEC. 17

SEC. 8