

HOCKING COUNTY

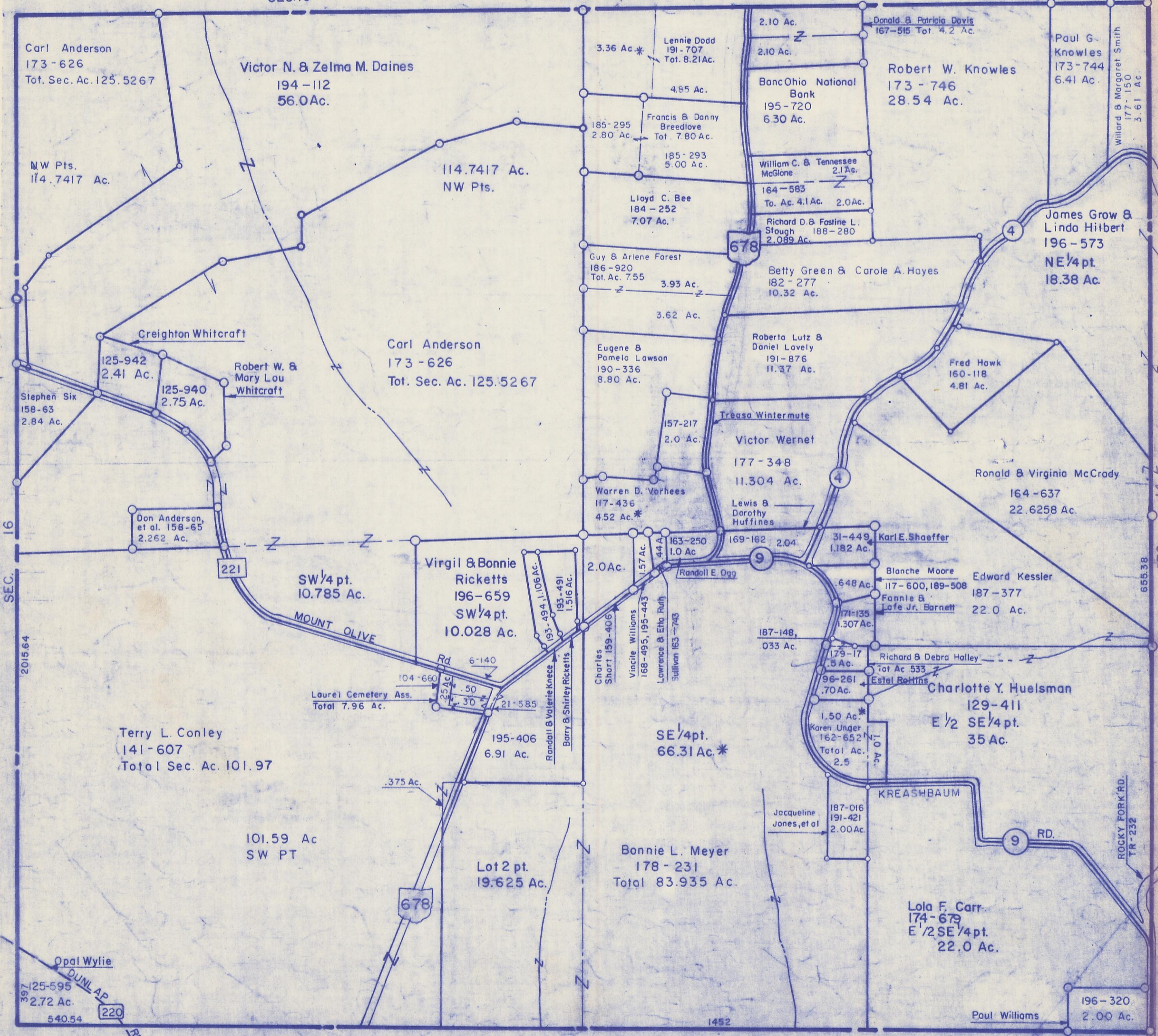
Sec.15 T12 R18

LAUREL TWP

Scale 1"=400'

SEC.10

SEC.10



Carl Anderson
173-626
Tot. Sec. Ac. 125.5267

Victor N. & Zelma M. Daines
194-112
56.0 Ac.

Lennie Dodd
191-707
Tot. 8.21 Ac.

Donald & Patricia Davis
167-515 Tot. 4.2 Ac.

Paul G. Knowles
173-744
6.41 Ac.

NW Pts.
114.7417 Ac.

114.7417 Ac.
NW Pts.

Francis & Danny
Breedlove
Tot. 7.80 Ac.

BancOhio National
Bank
195-720
6.30 Ac.

Robert W. Knowles
173-746
28.54 Ac.

Willard & Margaret Smith
177-150
3.61 Ac.

Creighton Whitcraft

Carl Anderson
173-626
Tot. Sec. Ac. 125.5267

Lloyd C. Bee
184-252
7.07 Ac.

William C. & Tennessee
McGone
164-583
To. Ac. 4.1 Ac. 2.0 Ac.

James Grow &
Linda Hilbert
196-573
NE 1/4 pt.
18.38 Ac.

Stephen Six
158-63
2.84 Ac.

125-942
2.41 Ac.

125-940
2.75 Ac.

Robert W. &
Mary Lou
Whitcraft

Guy & Arlene Forest
186-920
Tot. Ac. 7.55

678

Richard D. & Fostine L.
Stough
188-280
2.089 Ac.

Betty Green & Carole A. Hayes
182-277
10.32 Ac.

Roberta Lutz &
Daniel Lovely
191-876
11.37 Ac.

Fred Hawk
160-118
4.81 Ac.

Don Anderson,
et al. 158-65
2.262 Ac.

221

SW 1/4 pt.
10.785 Ac.

Virgil & Bonnie
Ricketts
196-659
SW 1/4 pt.
10.028 Ac.

Warren D. Vorhees
117-436
4.52 Ac.*

Treasa Wintermute
157-217
2.0 Ac.

Victor Wernet
177-348
11.304 Ac.

Ronald & Virginia McCrady
164-637
22.6258 Ac.

SEC. 16

2015.64

MOUNT OLIVE
Rd

Laurel Cemetery Ass.
Total 7.96 Ac.

104-660
6-140
21-585

2.0 Ac.

Vincile Williams
168-495, 195-443
44A

163-250
1.0 Ac

169-162
2.04

31-449
1.182 Ac.

Karl E. Shaeffer

Blanche Moore
117-600, 189-508

Edward Kessler
187-377

Terry L. Conley
141-607
Total Sec. Ac. 101.97

101.59 Ac
SW PT

.375 Ac.

Lot 2 pt.
19.625 Ac.

SE 1/4 pt.
66.31 Ac.*

Bonnie L. Meyer
178-231
Total 83.935 Ac.

187-148,
.033 Ac.

179-17
.5 Ac.

Richard & Debra Halley
Tot. Ac. 533

Estel Rollins

96-261
.70 Ac.

171-135
1.307 Ac.

Charlotte Y. Huelsman
129-411
E 1/2 SE 1/4 pt.
35 Ac.

Opal Wylie
125-595
2.72 Ac.

220

Jacqueline
Jones, et al
187-016
191-421
2.00 Ac.

KREASHBAUM

9 RD.

Lola F. Carr
174-679
E 1/2 SE 1/4 pt.
22.0 Ac.

196-320
2.00 Ac.

Paul Williams

SEC. 22

SEC. 15