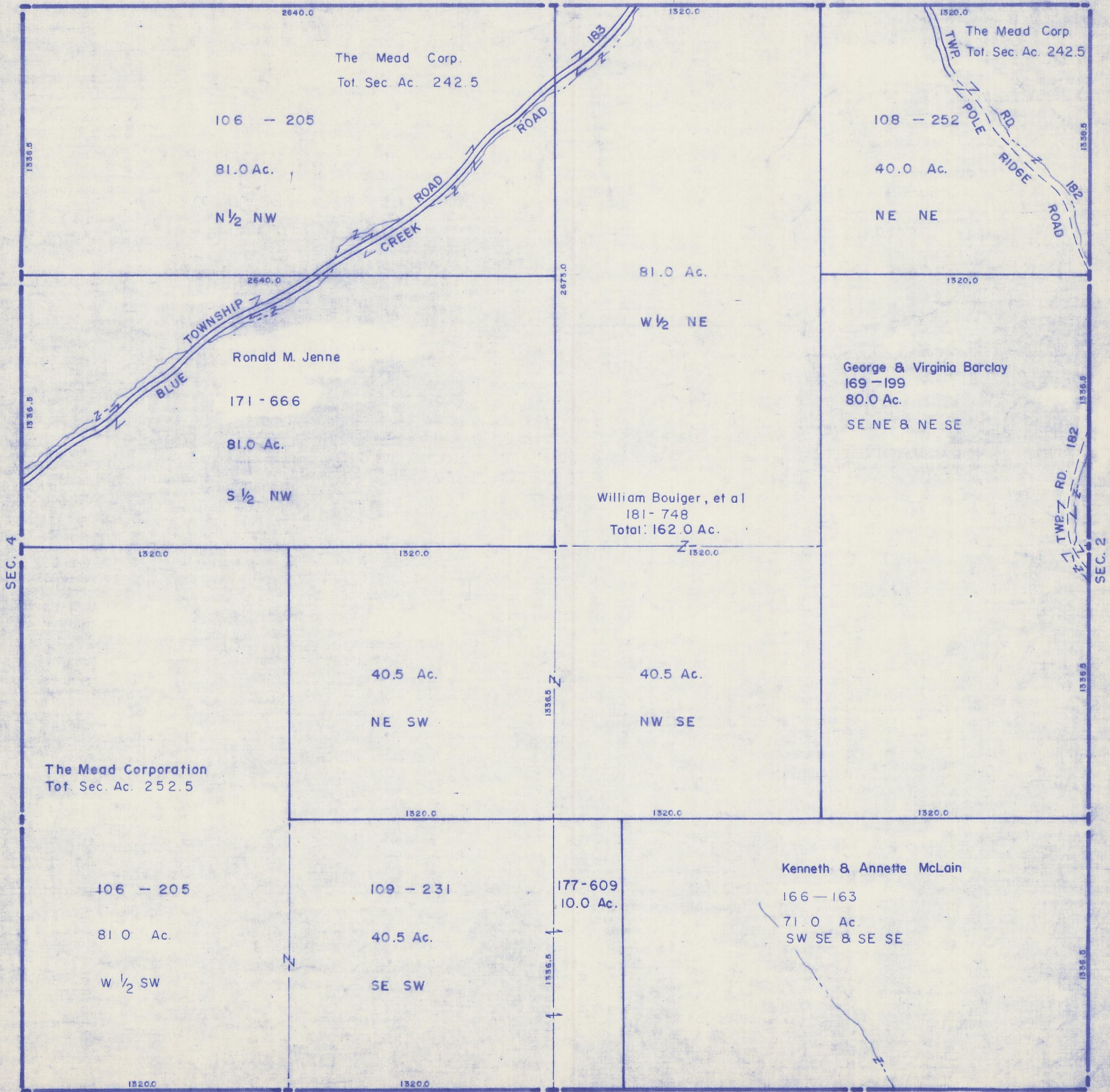


HOCKING COUNTY

Sec. 3 T10 R 19
SALT CREEK TWP.

Scale 1"=400'

SEC. 34



The Mead Corp.
Tot. Sec. Ac. 242.5

106 - 205

81.0 Ac.

N 1/2 NW

The Mead Corp
Tot. Sec. Ac. 242.5

108 - 252

40.0 Ac.

NE NE

Ronald M. Jenne

171 - 666

81.0 Ac.

S 1/2 NW

George & Virginia Barclay
169 - 199
80.0 Ac.

SE NE & NE SE

William Boulger, et al
181 - 748
Total: 162.0 Ac.

40.5 Ac.

NE SW

40.5 Ac.

NW SE

The Mead Corporation
Tot. Sec. Ac. 252.5

106 - 205

81.0 Ac.

W 1/2 SW

109 - 231

40.5 Ac.

SE SW

177-609
10.0 Ac.

Kenneth & Annette McLain

166 - 163

71.0 Ac.

SW SE & SE SE

SEC. 10 EAGLE TWP.

Vinton Co.

SEC. 3
BOTTOM TIER