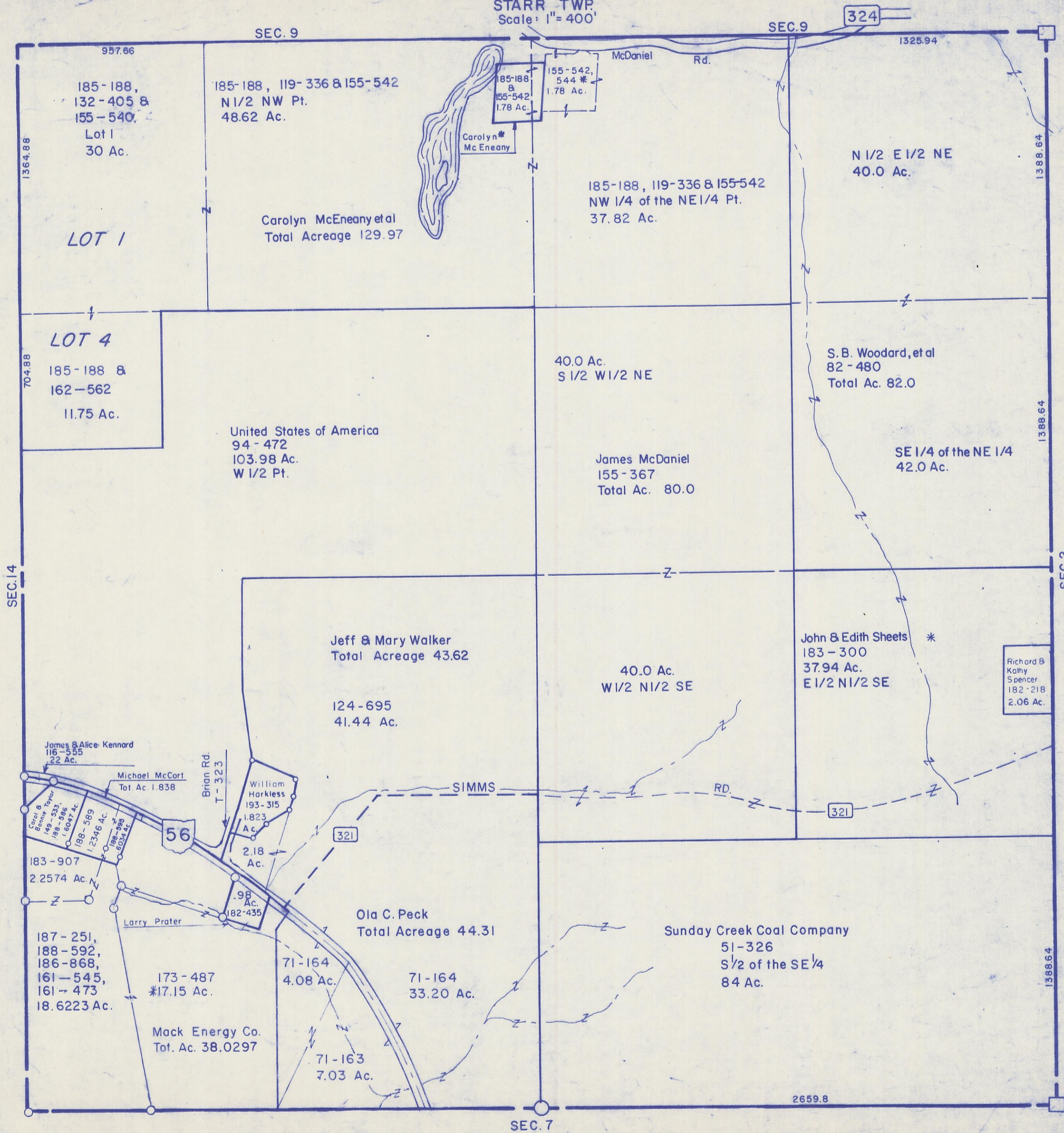


HOCKING COUNTY

Sec. 8 T 12 R 16

STARR TWP.  
Scale: 1" = 400'



185-188,  
132-405 &  
155-540  
Lot 1  
30 Ac.

LOT 1

185-188, 119-336 & 155-542  
N 1/2 NW Pt.  
48.62 Ac.

Carolyn McEneaney et al  
Total Acreage 129.97

185-188 &  
155-542  
1.78 Ac.

Carolyn  
Mc Eneaney

155-542,  
544 \*  
1.78 Ac.

185-188, 119-336 & 155-542  
NW 1/4 of the NE 1/4 Pt.  
37.82 Ac.

N 1/2 E 1/2 NE  
40.0 Ac.

LOT 4

185-188 &  
162-562  
11.75 Ac.

United States of America  
94-472  
103.98 Ac.  
W 1/2 Pt.

40.0 Ac.  
S 1/2 W 1/2 NE

S. B. Woodard, et al  
82-480  
Total Ac. 82.0

James McDaniel  
155-367  
Total Ac. 80.0

SE 1/4 of the NE 1/4  
42.0 Ac.

Jeff & Mary Walker  
Total Acreage 43.62

124-695  
41.44 Ac.

40.0 Ac.  
W 1/2 N 1/2 SE

John & Edith Sheets \*  
183-300  
37.94 Ac.  
E 1/2 N 1/2 SE

Richard B  
Kathy  
Spencer  
182-218  
2.06 Ac.

James & Alice Kennard  
116-555  
22 Ac.

Michael McCort  
Tot. Ac. 1.838

William  
Harkless  
193-315  
1.823  
Ac.

Carol &  
Bonnie Taylor  
149-533,  
188-586,  
1,6047 Ac.

188-589  
1,2346 Ac.

183-907  
2.2574 Ac.

187-251,  
188-592,  
186-868,  
161-545,  
161-473  
18.6223 Ac.

173-487  
\*17.15 Ac.

Mack Energy Co.  
Tot. Ac. 38.0297

71-164  
4.08 Ac.

71-164  
33.20 Ac.

71-163  
7.03 Ac.

Ola C. Peck  
Total Acreage 44.31

Sunday Creek Coal Company  
51-326  
S 1/2 of the SE 1/4  
84 Ac.

2659.8

SEC. 8