

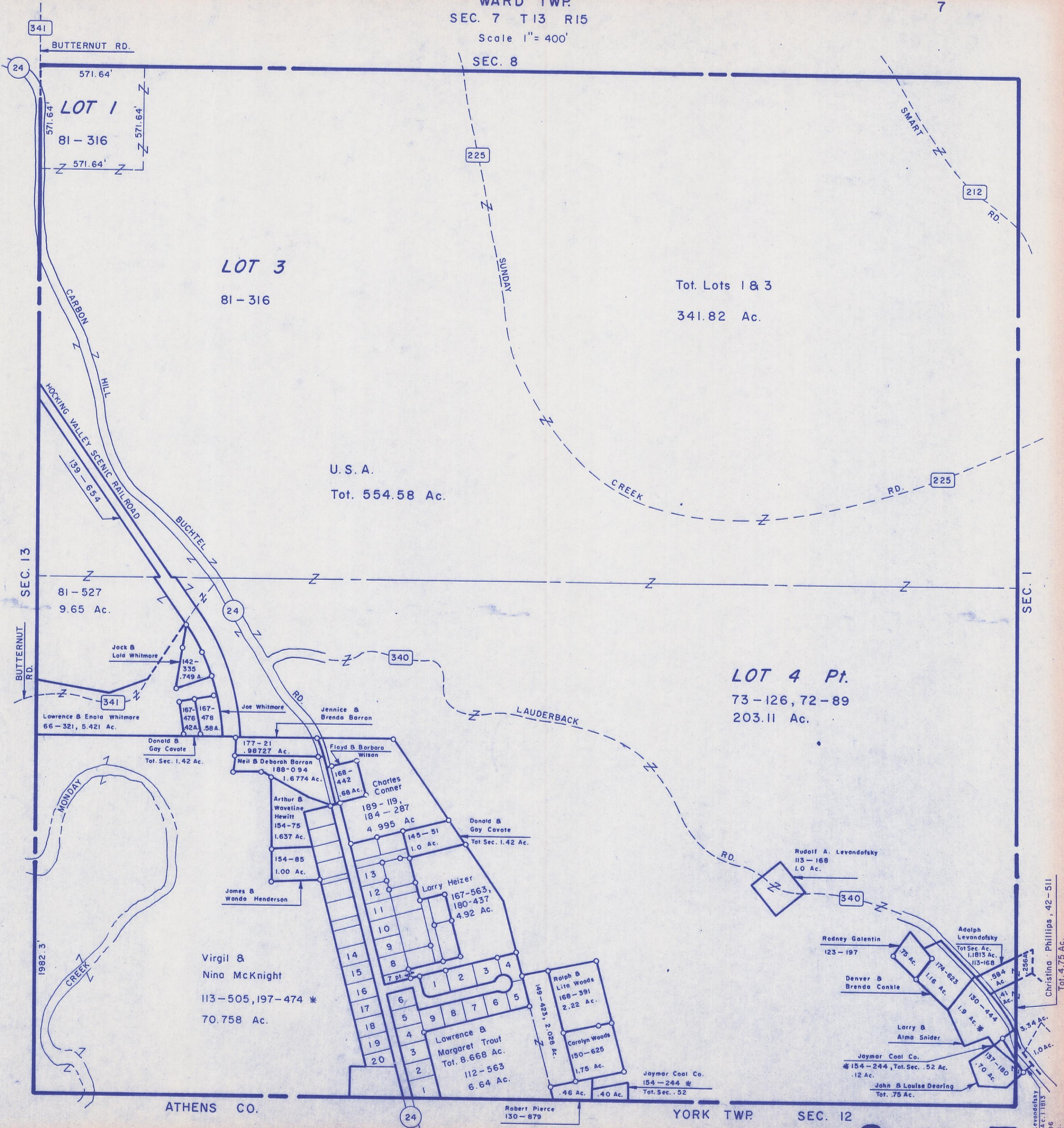
HOCKING COUNTY

WARD TWP.

SEC. 7 T13 R15

Scale 1" = 400'

7



LOT 1
81-316

LOT 3
81-316

Tot. Lots 1 & 3
341.82 Ac.

U.S.A.
Tot. 554.58 Ac.

LOT 4 Pt.
73-126, 72-89
203.11 Ac.

Virgil &
Nina McKnight
113-505, 197-474 *
70.758 Ac.

Lawrence &
Margaret Trout
Tot. 8.668 Ac.
112-563
6.64 Ac.

Rodney Galentin
123-197

Adolph Levondofsky
Tot. Sec. Ac.
1.1813 Ac.
113-168

Denver &
Brenda Conkle

Larry &
Alma Snider

Jaymar Coal Co.
* 154-244, Tot. Sec. .52 Ac.
.12 Ac.

Jahn & Louise Dearing
Tot. .75 Ac.

Christina Phillips, 42-511
Tot. 4.75 Ac.

Adolph Levondofsky
Tot. Sec. Ac. 1.1813
* 190-506
.3413 Ac.

Sec. 7