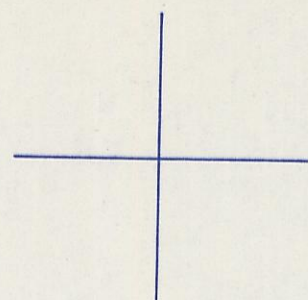


HOCKING COUNTY

WARD TWP.

SEC. 20 T 13 R 15

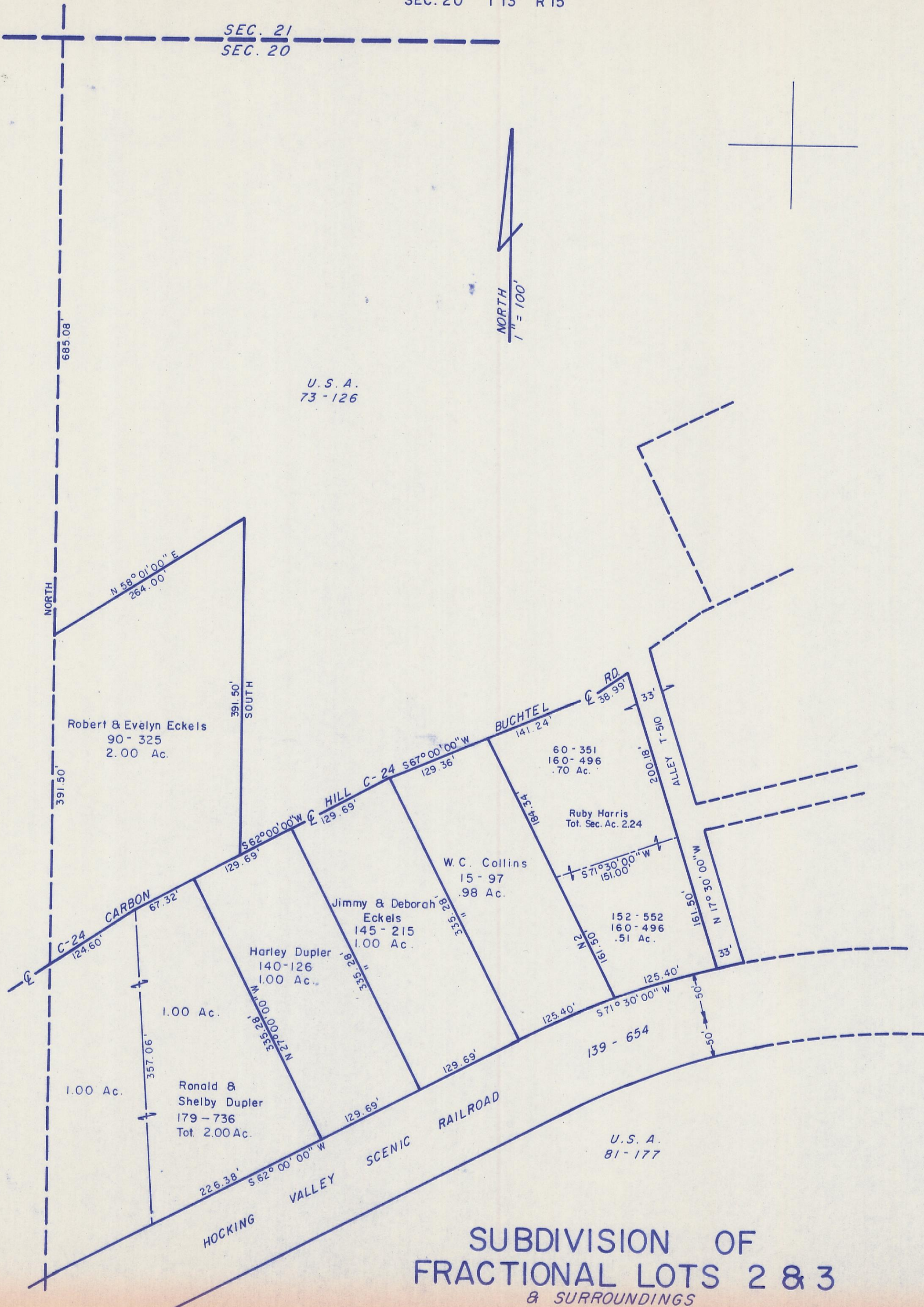
SEC. 21
SEC. 20



NORTH
1" = 100'

U. S. A.
73 - 126

Oliver & Robert
Salter
127-413 & 104-170



SEE 20 - E

SUBDIVISION OF
FRACTIONAL LOTS 2 & 3
& SURROUNDINGS

20-D