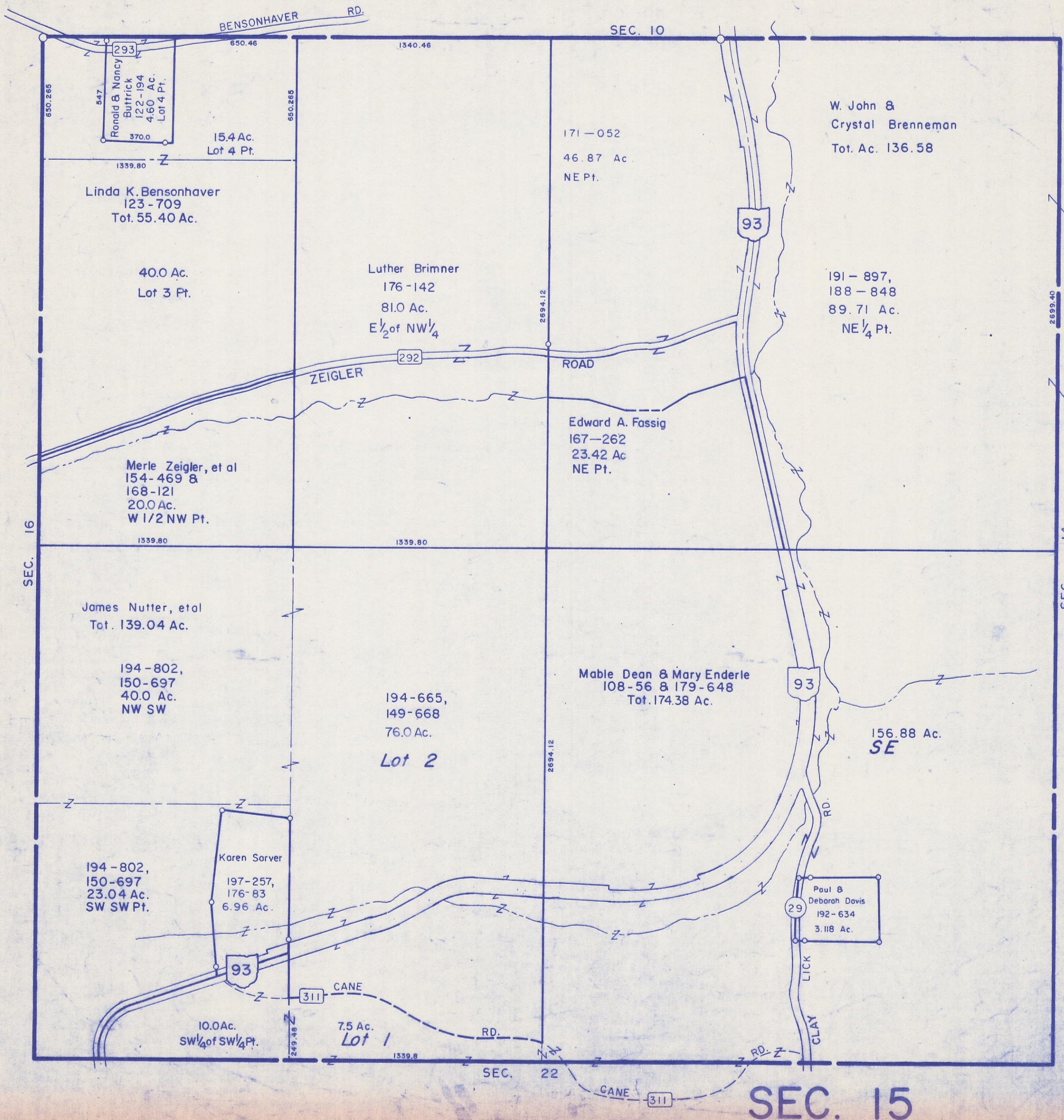


HOCKING COUNTY

Sec. 15 T13 R17

WASHINGTON TWP.

Scale 1" = 400'



W. John &
Crystal Brenneman
Tot. Ac. 136.58

191 - 897,
188 - 848
89.71 Ac.
NE 1/4 Pt.

171 - 052
46.87 Ac.
NE Pt.

Luther Brimner
176 - 142
81.0 Ac.
E 1/2 of NW 1/4

Edward A. Fassig
167 - 262
23.42 Ac.
NE Pt.

Linda K. Bensonhaver
123 - 709
Tot. 55.40 Ac.

40.0 Ac.
Lot 3 Pt.

Merle Zeigler, et al
154 - 469 &
168 - 121
20.0 Ac.
W 1/2 NW Pt.

James Nutter, et al
Tot. 139.04 Ac.

194 - 802,
150 - 697
40.0 Ac.
NW SW

194 - 665,
149 - 668
76.0 Ac.
Lot 2

Mable Dean & Mary Enderle
108 - 56 & 179 - 648
Tot. 174.38 Ac.

156.88 Ac.
SE

194 - 802,
150 - 697
23.04 Ac.
SW SW Pt.

Karen Sarver
197 - 257,
176 - 83
6.96 Ac.

Paul &
Deborah Davis
192 - 634
3.118 Ac.

10.0 Ac.
SW 1/4 of SW 1/4 Pt.

7.5 Ac.
Lot 1

SEC. 15