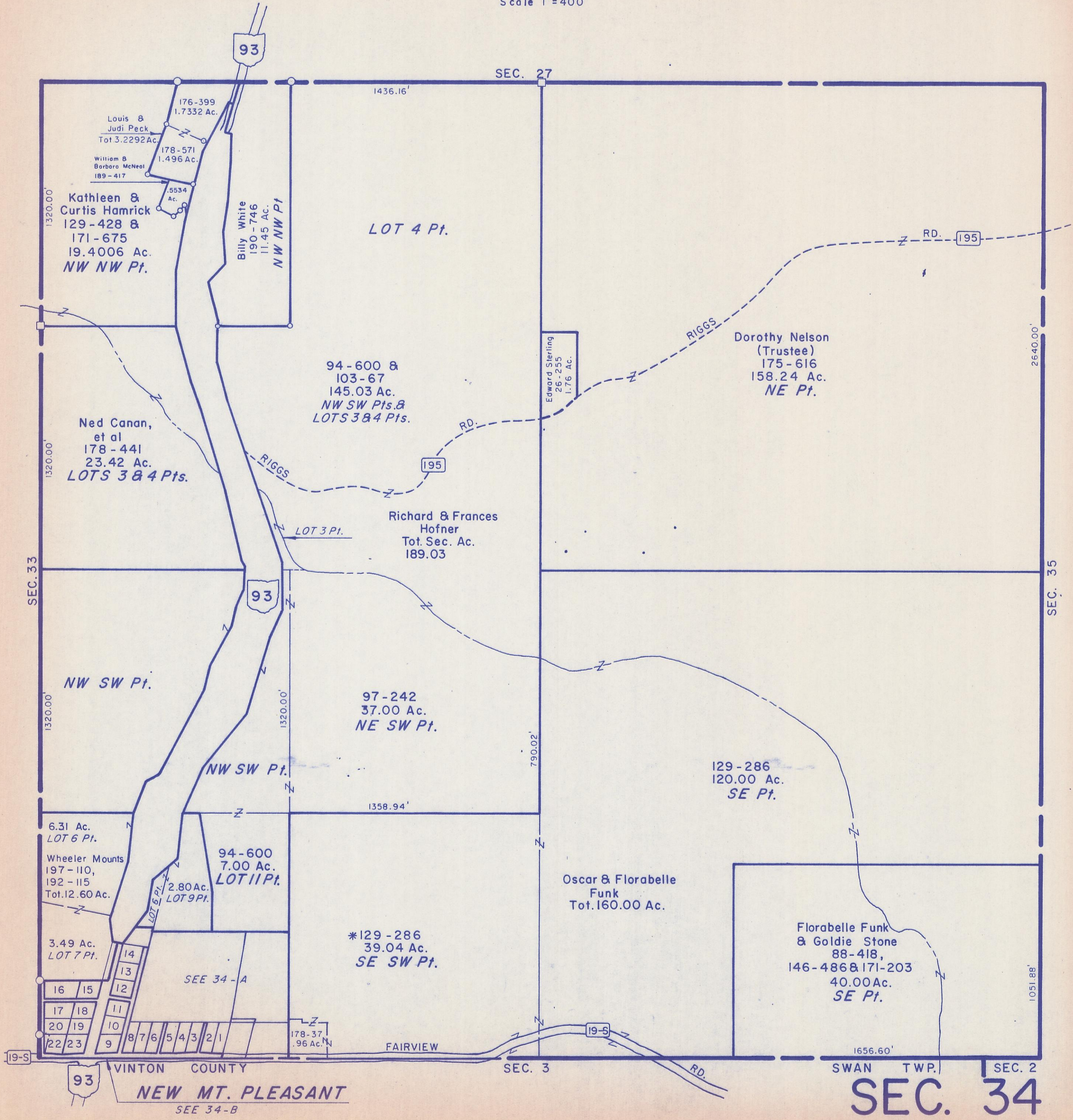


HOCKING COUNTY

WASHINGTON TWP.

SEC. 34 T 13 R 17

Scale 1"=400'



Louis & Judi Peck
Tot 3.2292 Ac.
176-399
1.7332 Ac.

William & Barbara McNeel
189-417
178-571
1.496 Ac.

Kathleen & Curtis Hamrick
129-428 & 171-675
19.4006 Ac.
NW NW Pt.

Billy White
190-746
11.45 Ac.
NW NW Pt.

LOT 4 Pt.

Ned Canan, et al
178-441
23.42 Ac.
LOTS 3 & 4 Pts.

94-600 & 103-67
145.03 Ac.
NW SW Pts. & LOTS 3 & 4 Pts.

Dorothy Nelson (Trustee)
175-616
158.24 Ac.
NE Pt.

Richard & Frances Hofner
Tot. Sec. Ac.
189.03

NW SW Pt.

97-242
37.00 Ac.
NE SW Pt.

129-286
120.00 Ac.
SE Pt.

6.31 Ac.
LOT 6 Pt.
Wheeler Mounts
197-110, 192-115
Tot. 12.60 Ac.

94-600
7.00 Ac.
LOT 11 Pt.

Oscar & Florabelle Funk
Tot. 160.00 Ac.

3.49 Ac.
LOT 7 Pt.

*129-286
39.04 Ac.
SE SW Pt.

Florabelle Funk & Goldie Stone
88-418, 146-486 & 171-203
40.00 Ac.
SE Pt.

16	15
17	18
20	19
22	23

SEE 34-A

93

VINTON COUNTY

NEW MT. PLEASANT

SEE 34-B

SEC. 34