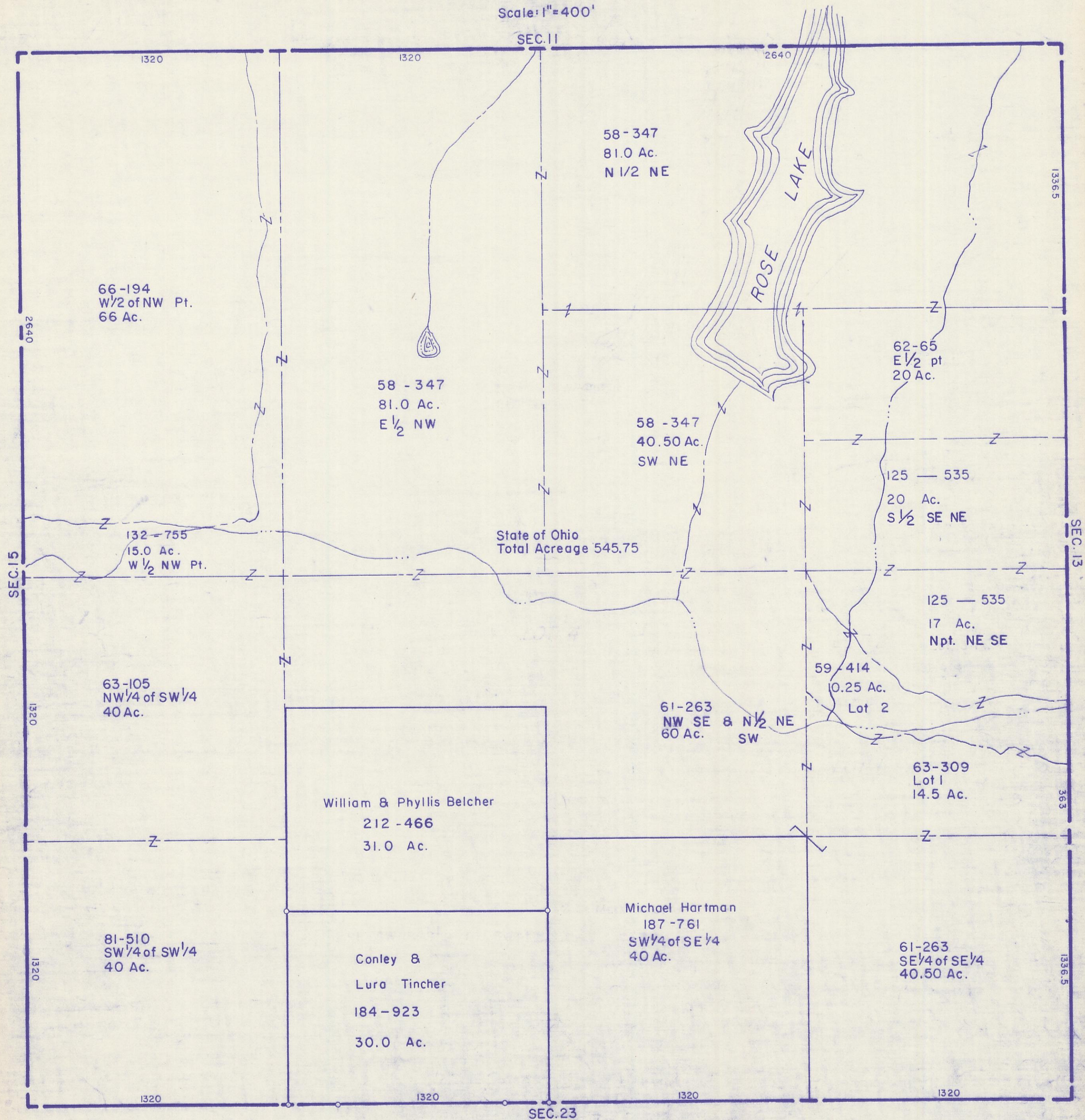


HOCKING COUNTY

Sec. 14 T11 R18

BENTON TWP.

Scale: 1"=400'



66-194
W 1/2 of NW Pt.
66 Ac.

58-347
81.0 Ac.
N 1/2 NE

58-347
81.0 Ac.
E 1/2 NW

58-347
40.50 Ac.
SW NE

62-65
E 1/2 pt
20 Ac.

125-535
20 Ac.
S 1/2 SE NE

State of Ohio
Total Acreage 545.75

132-755
15.0 Ac.
W 1/2 NW Pt.

125-535
17 Ac.
Npt. NE SE

63-105
NW 1/4 of SW 1/4
40 Ac.

59-414
0.25 Ac.
Lot 2

61-263
NW SE & N 1/2 NE
SW
60 Ac.

63-309
Lot 1
14.5 Ac.

William & Phyllis Belcher
212-466
31.0 Ac.

Michael Hartman
187-761
SW 1/4 of SE 1/4
40 Ac.

81-510
SW 1/4 of SW 1/4
40 Ac.

Conley &
Lura Tincher
184-923
30.0 Ac.

61-263
SE 1/4 of SE 1/4
40.50 Ac.

SEC. 14