

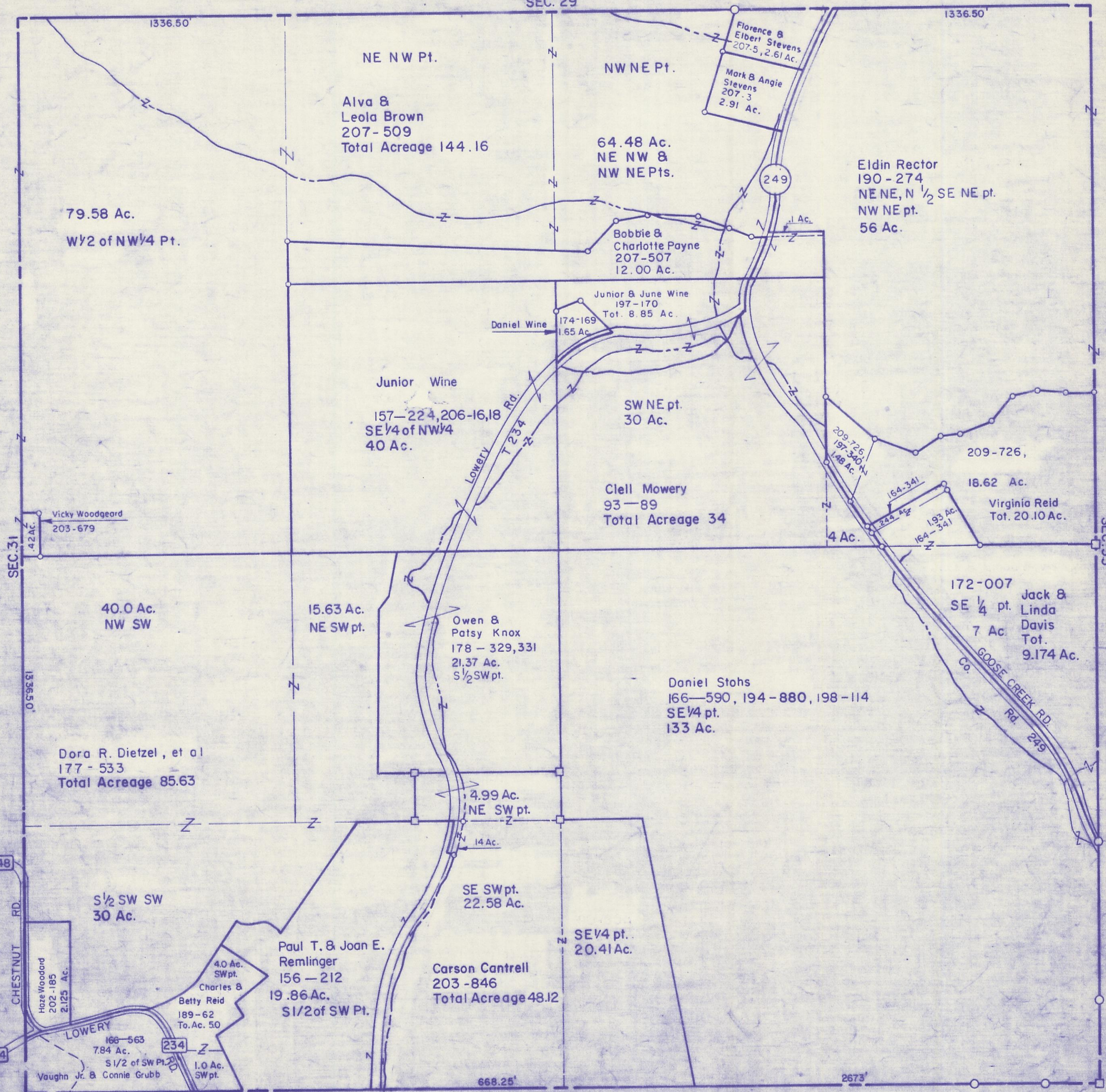
HOCKING COUNTY

Sec.32 T11 R18

BENTON TWP.

Scale: 1"=400'

SEC. 29



1336.50'

NE NW Pt.

Alva & Leola Brown
207-509
Total Acreage 144.16

NW NE Pt.

64.48 Ac.
NE NW & NW NE Pts.

Florence & Elbert Stevens
207-5, 2.61 Ac.

Mark & Angie Stevens
207-3
2.91 Ac.

Eldin Rector
190-274
NE NE, N 1/2 SE NE pt.
NW NE pt.
56 Ac.

79.58 Ac.
W 1/2 of NW 1/4 Pt.

Bobbie & Charlotte Payne
207-507
12.00 Ac.

Junior & June Wine
197-170
Tot. 8.85 Ac.

Daniel Wine
174-169
1.65 Ac.

Junior Wine
157-224, 206-16, 18
SE 1/4 of NW 1/4
40 Ac.

SW NE pt.
30 Ac.

Ciell Mowery
93-89
Total Acreage 34

Virginia Reid
Tot. 20.10 Ac.

18.62 Ac.

172-007
SE 1/4 pt.
7 Ac.
Jack & Linda Davis
Tot. 9.174 Ac.

Dora R. Dietzel, et al
177-533
Total Acreage 85.63

Owen & Patsy Knox
178-329, 331
21.37 Ac.
S 1/2 SW pt.

Daniel Stohs
166-590, 194-880, 198-114
SE 1/4 pt.
133 Ac.

4.99 Ac.
NE SW pt.

14 Ac.

SE SW pt.
22.58 Ac.

SE 1/4 pt.
20.41 Ac.

Paul T. & Joan E. Remlinger
156-212
19.86 Ac.
S 1/2 of SW Pt.

Carson Cantrell
203-846
Total Acreage 48.12

1/2 SW SW
30 Ac.

4.0 Ac. SW pt.
Charles & Betty Reid
189-62
To. Ac. 50

166-563
7.84 Ac.
S 1/2 of SW Pt.
Vaughn Jr. & Connie Grubb

1.0 Ac. SW pt.

668.25'

2673'

CHESTNUT RD.

LOWERY

GOOSE CREEK RD.

VINTON CO.

SEC. 32