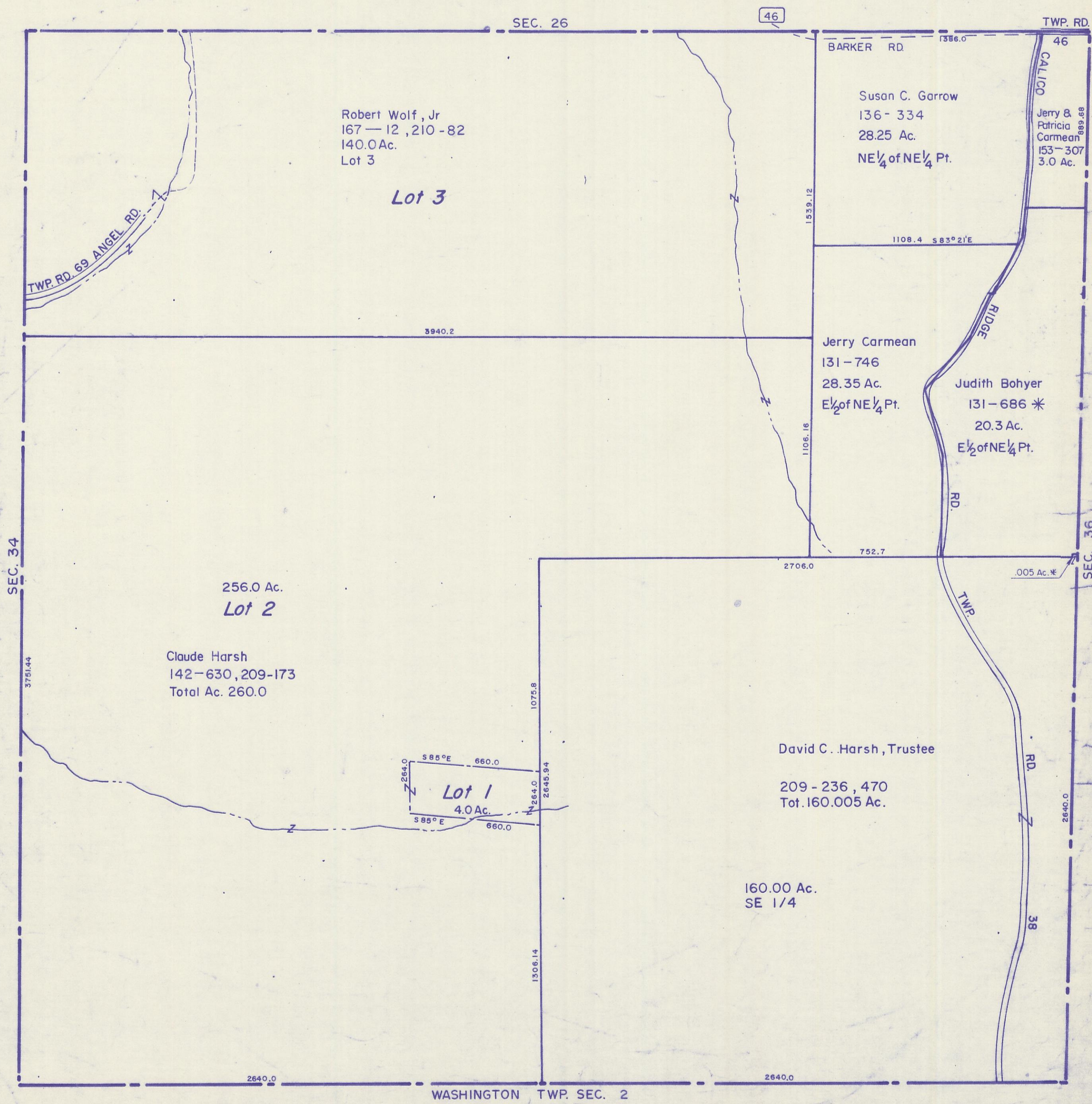


HOCKING COUNTY

Sec. 35, T14 R 17

FALLS TWP.

Scale 1"=400'



Robert Wolf, Jr  
167 — 12,210 - 82  
140.0 Ac.  
Lot 3

*Lot 3*

Susan C. Garrow  
136 - 334  
28.25 Ac.  
NE 1/4 of NE 1/4 Pt.

Jerry &  
Patricia  
Carmean  
153 - 307  
3.0 Ac.

Jerry Carmean  
131 - 746  
28.35 Ac.  
E 1/2 of NE 1/4 Pt.

Judith Bohyer  
131 - 686 \*  
20.3 Ac.  
E 1/2 of NE 1/4 Pt.

256.0 Ac.  
*Lot 2*

Claude Harsh  
142 - 630, 209 - 173  
Total Ac. 260.0

*Lot 1*  
4.0 Ac.

David C. Harsh, Trustee

209 - 236, 470  
Tot. 160.005 Ac.

160.00 Ac.  
SE 1/4

SEC. 35