

HOCKING COUNTY

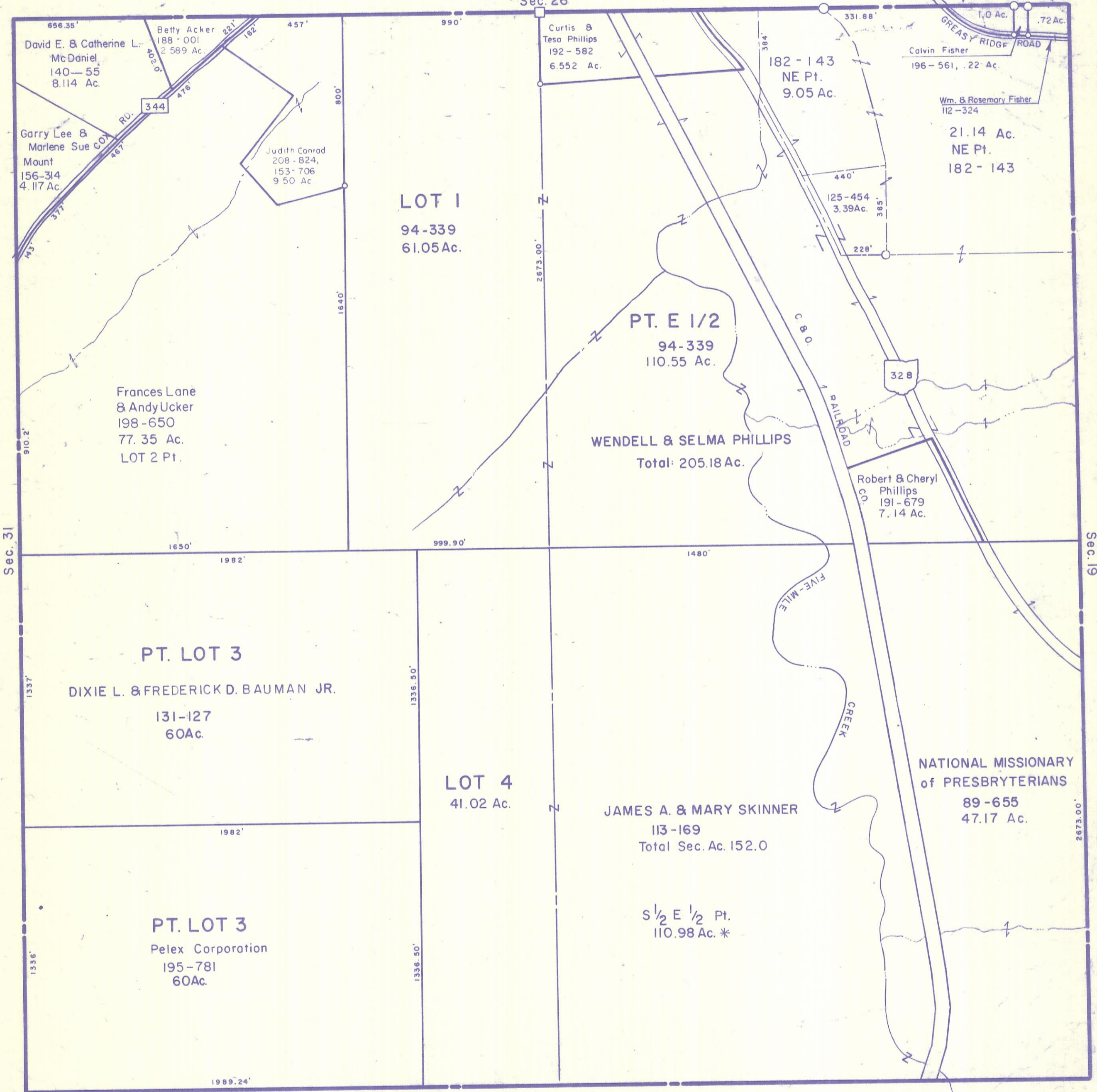
Sec. 25 T13 R16

GREEN TWP

Scale 1" = 400'

Sec. 26

354 William Sizemore 108-234



LOT 1
94-339
61.05 Ac.

PT. E 1/2
94-339
110.55 Ac.

WENDELL & SELMA PHILLIPS
Total: 205.18 Ac.

Frances Lane
& Andy Ucker
198-650
77.35 Ac.
LOT 2 Pt.

PT. LOT 3
DIXIE L. & FREDERICK D. BAUMAN JR.
131-127
60 Ac.

LOT 4
41.02 Ac.

JAMES A. & MARY SKINNER
113-169
Total Sec. Ac. 152.0

NATIONAL MISSIONARY
of PRESBYTERIANS
89-655
47.17 Ac.

PT. LOT 3
Pelex Corporation
195-781
60 Ac.

S 1/2 E 1/2 Pt.
110.98 Ac. *

Sec. 30 STARR TWP

SEC. 25