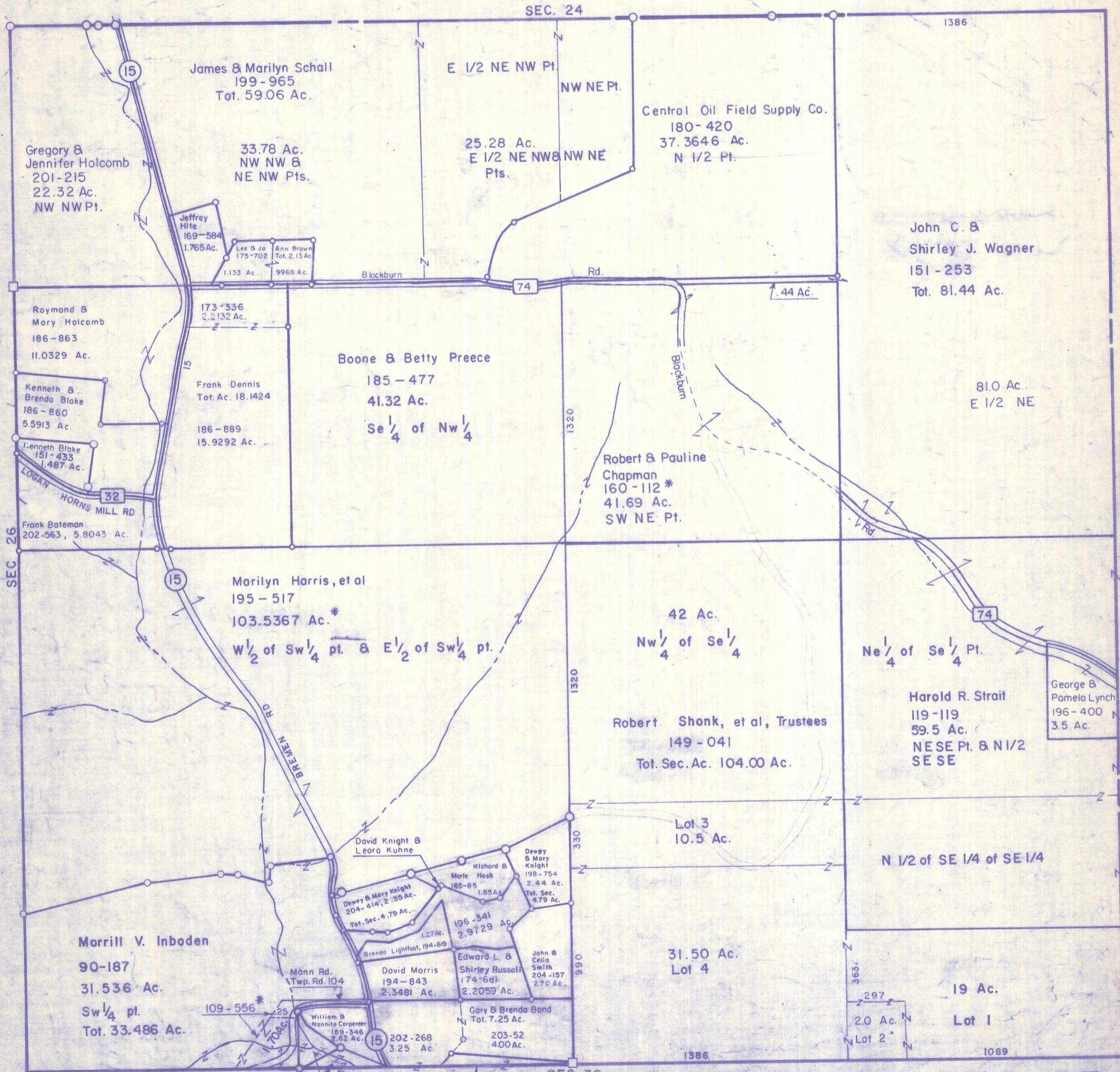


HOCKING COUNTY

SEC. 25 T. 15 R. 17

MARION TWP.

Scale 1" = 400'



James & Marilyn Schall  
199-965  
Tot. 59.06 Ac.

Gregory &  
Jennifer Holcomb  
201-215  
22.32 Ac.  
NW NW Pt.

33.78 Ac.  
NW NW &  
NE NW Pts.

E 1/2 NE NW Pt.  
NW NE Pt.  
25.28 Ac.  
E 1/2 NE NW & NW NE  
Pts.

Central Oil Field Supply Co.  
180-420  
37.3646 Ac.  
N 1/2 Pt.

John C. &  
Shirley J. Wagner  
151-253  
Tot. 81.44 Ac.

Raymond &  
Mary Holcomb  
186-863  
11.0329 Ac.

173-336  
2.2132 Ac.

Boone & Betty Preece  
185-477  
41.32 Ac.  
Se 1/4 of Nw 1/4

Frank Dennis  
Tot. Ac. 18.1424  
186-889  
15.9292 Ac.

Robert & Pauline  
Chapman  
160-112 \*  
41.69 Ac.  
SW NE Pt.

81.0 Ac.  
E 1/2 NE

Kenneth &  
Brendo Blake  
186-860  
5.5913 Ac.

Kenneth Blake  
151-433  
1.487 Ac.

Frank Bateman  
202-563, 5.8043 Ac.

Marilyn Harris, et al  
195-517  
103.5367 Ac.\*  
W 1/2 of Sw 1/4 pt. & E 1/2 of Sw 1/4 pt.

42 Ac.  
Nw 1/4 of Se 1/4

Ne 1/4 of Se 1/4 Pt.

Robert Shonk, et al, Trustees  
149-041  
Tot. Sec. Ac. 104.00 Ac.

Harold R. Strait  
119-119  
59.5 Ac.  
NE SE Pt. & N 1/2  
SE SE

George &  
Pamela Lynch  
196-400  
3.5 Ac.

Morrill V. Inboden  
90-187  
31.536 Ac.  
Sw 1/4 pt.  
Tot. 33.486 Ac.

David Knight &  
Leora Kuhne

Dewey & Mary Knight  
204-414, 2.35 Ac.  
Tot. Sec. 4.79 Ac.

Richard &  
Marie Hook  
185-85  
1.65 Ac.

Dewey & Mary Knight  
198-754  
2.44 Ac.  
Tot. Sec. 4.79 Ac.

196-341  
2.9729 Ac.

Brenda Lightfoot, 194-619  
1.27 Ac.

David Morris  
194-843  
2.3481 Ac.

Edward L. &  
Shirley Russell  
174-681  
2.2059 Ac.

John &  
Ceila  
Smith  
204-157  
2.70 Ac.

William B.  
Nannito Carpenter  
189-348  
2.62 Ac.

202-268  
3.25 Ac.

203-52  
4.00 Ac.

Charles Fox  
.45 Ac., 211-355

Paul Fought  
133-77, .44 Ac.\*

Allen & Estarah Blackburn  
195-297, .67 Ac.

SEC 25