

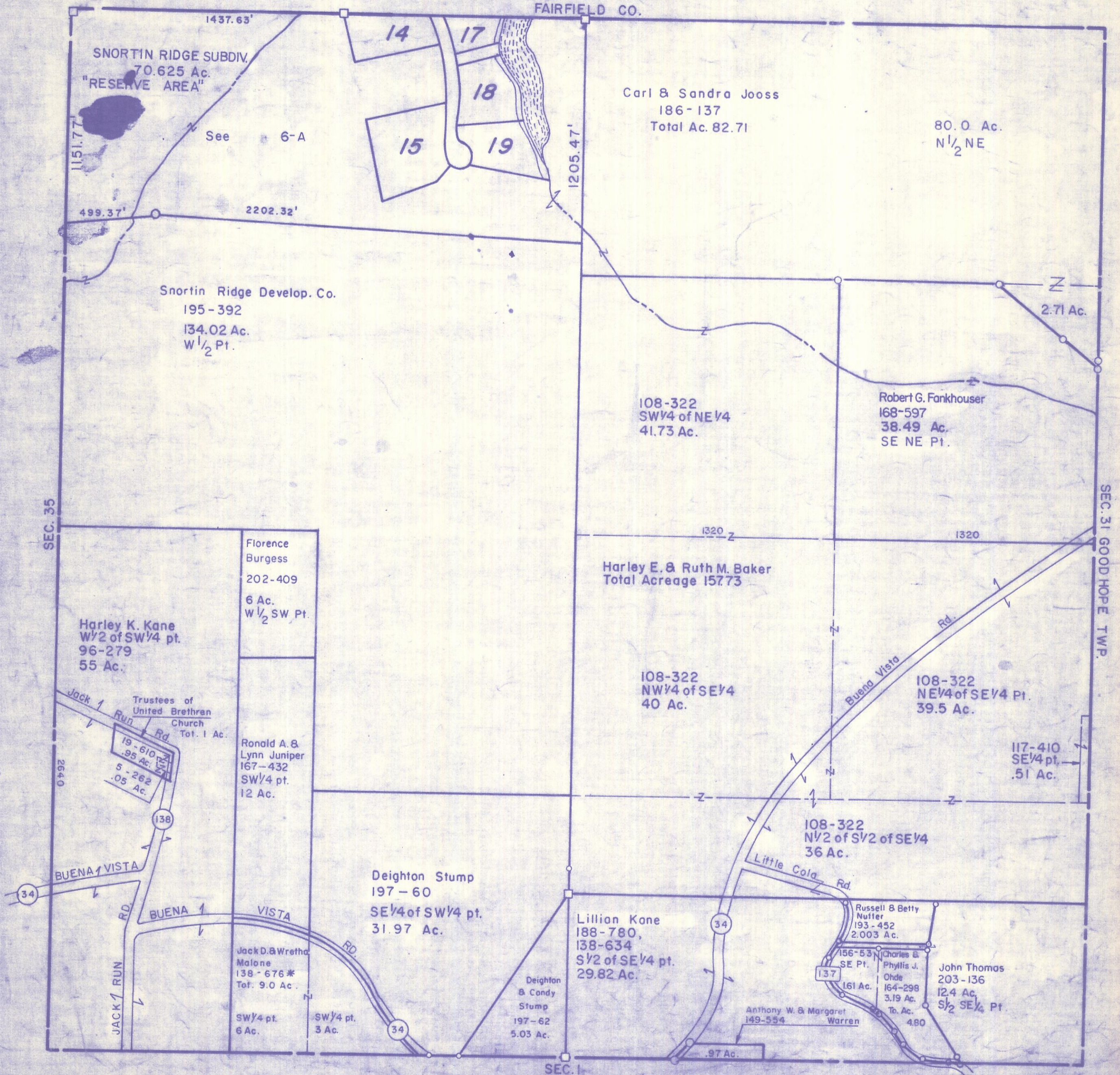
HOCKING COUNTY

Sec. 36 T13 R19

PERRY TWP.

Scale: 1" = 400'

FAIRFIELD CO.



1437.63'  
SNORTIN RIDGE SUBDIV.  
70.625 Ac.  
"RESERVE AREA"  
See 6-A  
1151.77'  
499.37'  
2202.32'

14 17  
18 19

Carl & Sandra Jooss  
186-137  
Total Ac. 82.71

80.0 Ac.  
N 1/2 NE

Snortin Ridge Develop. Co.  
195-392  
134.02 Ac.  
W 1/2 Pt.

108-322  
SW 1/4 of NE 1/4  
41.73 Ac.

Robert G. Fankhouser  
168-597  
38.49 Ac.  
SE NE Pt.

2.71 Ac.

SEC. 35

SEC. 31 GOOD HOPE TWP.

Harley K. Kane  
W 1/2 of SW 1/4 pt.  
96-279  
55 Ac.

Florence Burgess  
202-409  
6 Ac.  
W 1/2 SW Pt.

Harley E. & Ruth M. Baker  
Total Acreage 15773

108-322  
NW 1/4 of SE 1/4  
40 Ac.

108-322  
NE 1/4 of SE 1/4 Pt.  
39.5 Ac.

117-410  
SE 1/4 pt.  
.51 Ac.

Trustees of United Brethren Church  
Tot. 1 Ac.  
19-610  
.95 Ac.  
5-262  
.05 Ac.

Ronald A. & Lynn Juniper  
167-432  
SW 1/4 pt.  
12 Ac.

108-322  
N 1/2 of S 1/2 of SE 1/4  
36 Ac.

Deighton Stump  
197-60  
SE 1/4 of SW 1/4 pt.  
31.97 Ac.

Lillian Kane  
188-780,  
138-634  
S 1/2 of SE 1/4 pt.  
29.82 Ac.

Russell & Betty Nuffer  
193-452  
2.003 Ac.

Jack D. & Wretha Malone  
138-676\*  
Tot. 9.0 Ac.  
SW 1/4 pt.  
6 Ac.  
SW 1/4 pt.  
3 Ac.

Deighton & Condy Stump  
197-62  
5.03 Ac.

Charles & Phyllis J. Ohde  
164-298  
3.19 Ac.  
To Ac. 4.80

John Thomas  
203-136  
12.4 Ac.  
S 1/2 SE 1/4 Pt.

Anthony W. & Margaret Warren  
149-554

SEC. 1

SEC. 36 (TOP TIER)